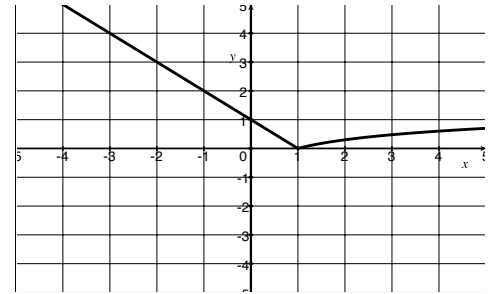
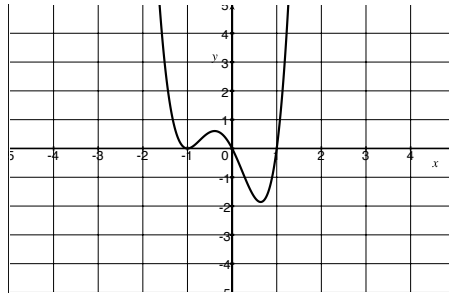
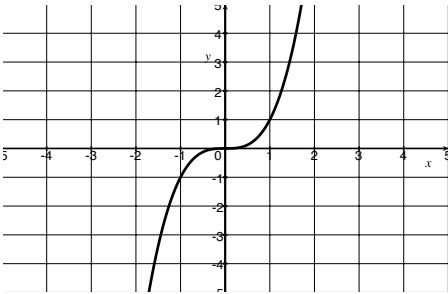


# Quiz 3

Show *all* your work. No credit is given without reasonable supporting work. There are *two* sides to this quiz.

1. [2] (Polynomial Wks #3) Identify all of the following that could be a graph of a degree three polynomial.

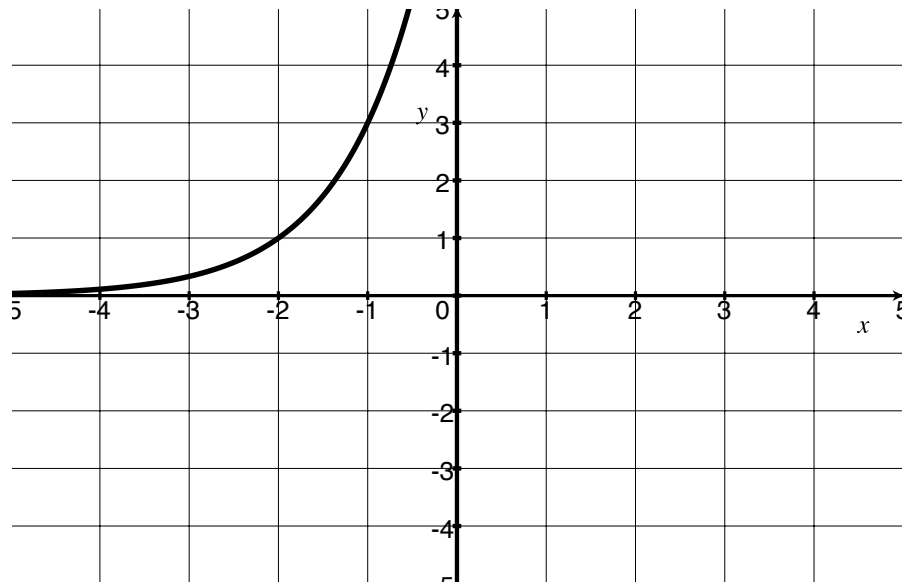


2. [1] (WebHW9 #16) Divide.

$$\frac{8x^3 - 9x^2 + 2x}{4x^2 - 3x + 1}$$

3. [2] (§3.2 #48) Find  $x$  given  $\log_{16} \sqrt[4]{x} = \frac{1}{4}$ .

4. [3] (log Wks #3) The graph of  $f$  shown below is an exponential function that has been shifted horizontally. Find the algebraic rule for  $f$ .



t