

Quiz 1

Show *all* your work. No credit is given without reasonable supporting work. There are *two* sides to this quiz.

1. The equation $P(t) = -0.002t^2 + 0.54t + 14.5$ models the approximate number (in millions) of female college students in a country for the academic years 2005-2009.

(a) [1] (Functions Activity #2) Find $P(a + h)$. (No not simplify!)

(b) [2] (WebHW1 #18) Find the P -intercept and explain what it represents.

2. Define G that takes numbers to the letter that it starts with when written in english. For example, $G(2) = t$ since two begins with the letter t.

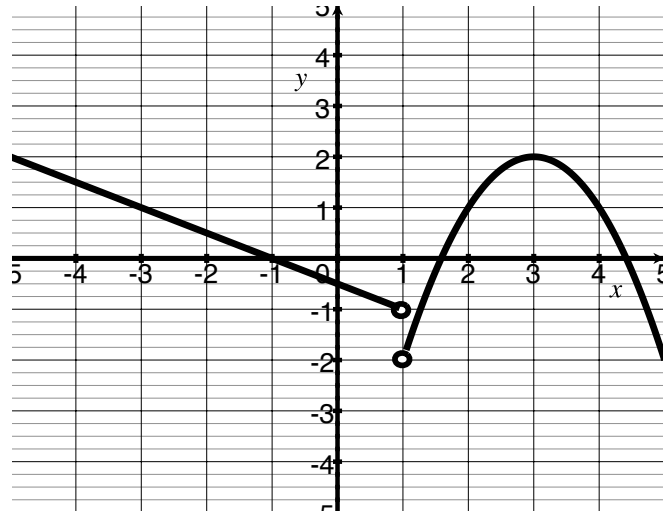
(a) [1] (2017 Winter TMath120) Is the point $(6, s)$ on the graph of G ? Why or why not?

(b) [1] (§1.3 #104) Is G a function? Why or why not.

3. Let g be the piecewise defined graph shown below.

(a) [1] (WebHW1 #10) Find $g(3)$

(b) [2] (WebHW #12)
Estimate x such that $g(x) = 1$.



(c) [2] (§1.1 #104) Identify any minimum point(s) of g for $-5 \leq x \leq 5$.