

John D. Wilkerson
 Professor
 Director, [Center for American Politics and Public Policy](#)
 Department of Political Science
 University of Washington
jwilker@uw.edu
 Ph.D. University of Rochester 1991
 M.A. University of Arizona 1988
 B.A. Portland State University 1984

RESEARCH INTERESTS [Click here for C.V.](#)

Legislative institutions, agenda setting, and policy variations in legislative politics.

In [Congress and the Politics of Problem Solving](#) (with E. Scott Adler, Cambridge 2012), we argue that the issue agenda of Congress is primarily problem driven and that internal and external shocks, such as expiring laws and salient events are key predictors of policy change in Congress. This perspective highlights the importance of problem-solving considerations that transcends partisan politics, and calls for more attention to issue agenda setting in Congress and the problem-solving activities of congressional committees.

Prior work experience. Newspaper delivery boy, grocery store bagger; farm worker; woodstove installer, retail sales; welder, metal fabricator; roofer; convenience store clerk; campaign researcher; teaching assistant; research assistant.

Computational and big data approaches to analyzing political text.

I have been using supervised machine learning methods to label events for topic since 2006, have coordinated a number of workshops over the years, and currently teach as Text as Data graduate level class at the UW.

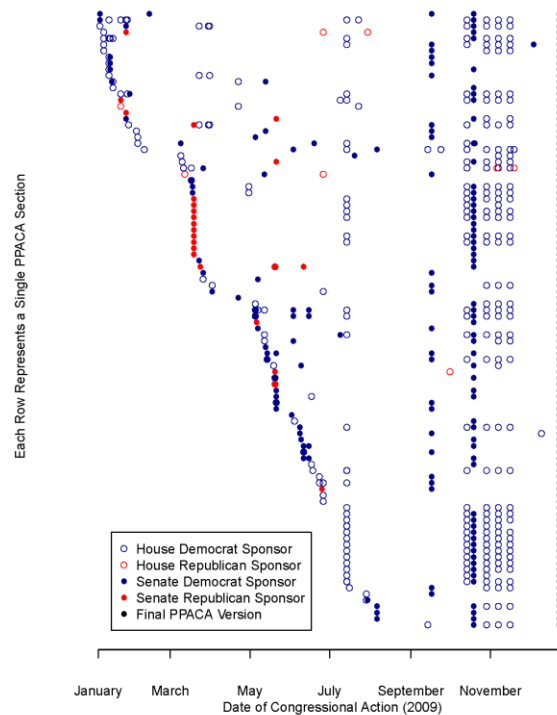
Policy Ideas Project. A current project investigates text reuse methods (e.g. plagiarism detection) as a means for tracing policy ideas as distinct from bills as they move through the legislative process.

Congress
And The
Politics of
Problem Solving

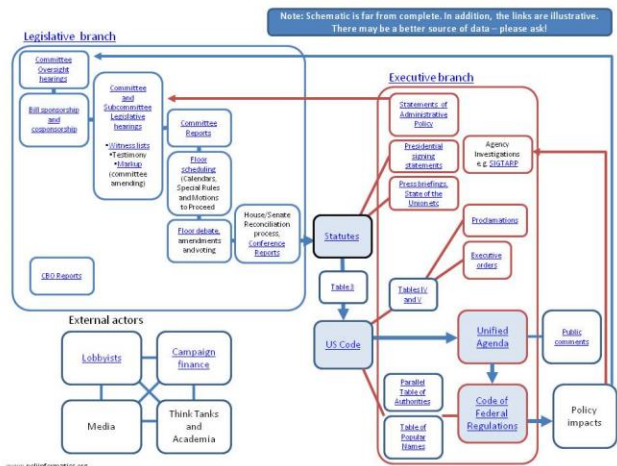


E. Scott Adler
John D. Wilkerson

CAMBRIDGE



Auth (see graphic on the right) is a one of a kind relational database that links provisions in laws to the U.S. Code and to proposed and enacted regulations (1995-present).



Congressional Bills Project A database of more than 400,000 public bill titles (1947-near present) linked to extensive information about the bill's progress, sponsor and topic. The CBP is the only digital resource for information about congressional bills introduced

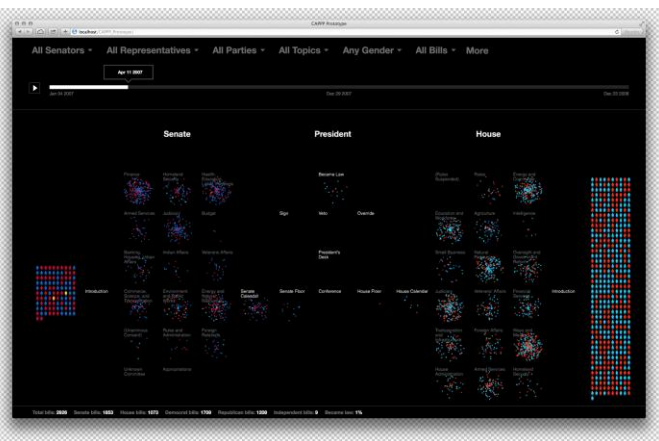
Policy Agendas Project The Policy Agendas project labels about 750,000 U.S. policymaking events since the Second World War for topic (19) and subtopic (225). It is designed to provide a reliable approach to tracing changing issue attention over time and across decision-making venues.

Comparative Agendas Project The Comparative Agendas Project is a stimulating extension of the Policy Agendas Project. It currently includes research teams in 12 countries who are applying the same topic system to political events in other nations. CAP researchers meet annually to share their findings. Ultimately the CAP will offer opportunities for systematic cross-national comparisons of changing issue attention and its policy and political consequences.

PoliInformatics Research Coordination Network brings scholars from different disciplines together to collaborate in the government data research domain.

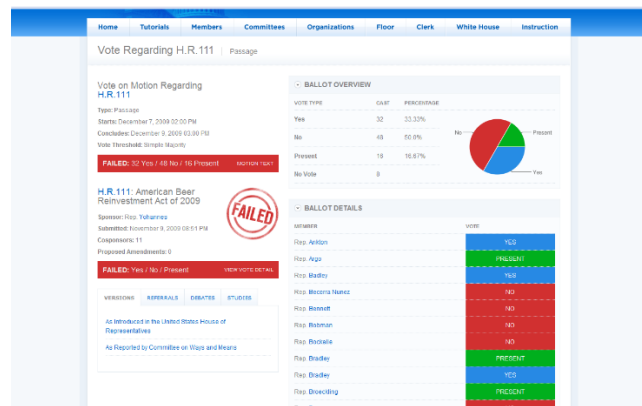


Legislative Explorer is a data-driven visualization of congressional lawmaking that visualizes the progress of more than 250,000 bills and resolutions introduced since 1973, and is updated nightly.



TEACHING INTERESTS

LegSim is a web-based virtual legislature that I started to develop in 2001. It is used by students across the nation at the college and high school levels.



Undergraduate: U.S. Congress (Simulation), State Politics and Policy, the [CAPP Undergraduate Research Fellows Program](#), and the [Washington State Legislative Internship Program](#).

Graduate: American Political Institutions, [Text as Data](#), Game Theory for Political Scientists, Agenda Setting.

OUTSIDE INTERESTS

Two kids, one dog, one cat and six five two! chickens. I commute by bike from Bainbridge Island and completed [Ironman France](#) (11:50) in 2012 (been there, done that).