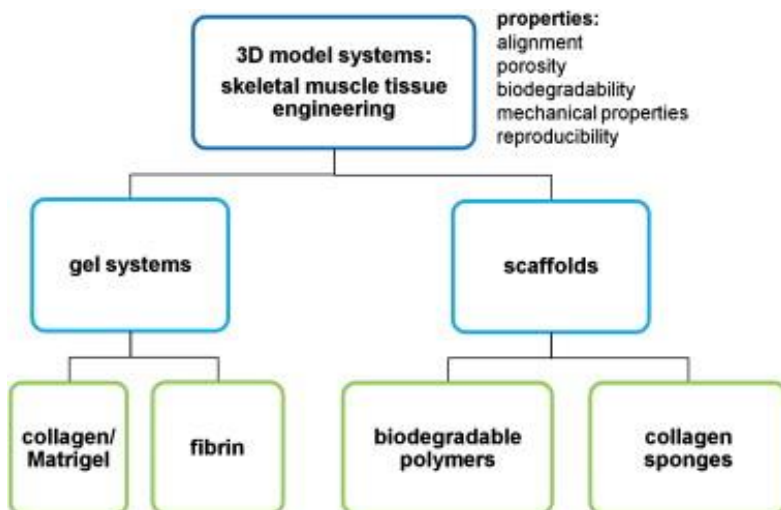
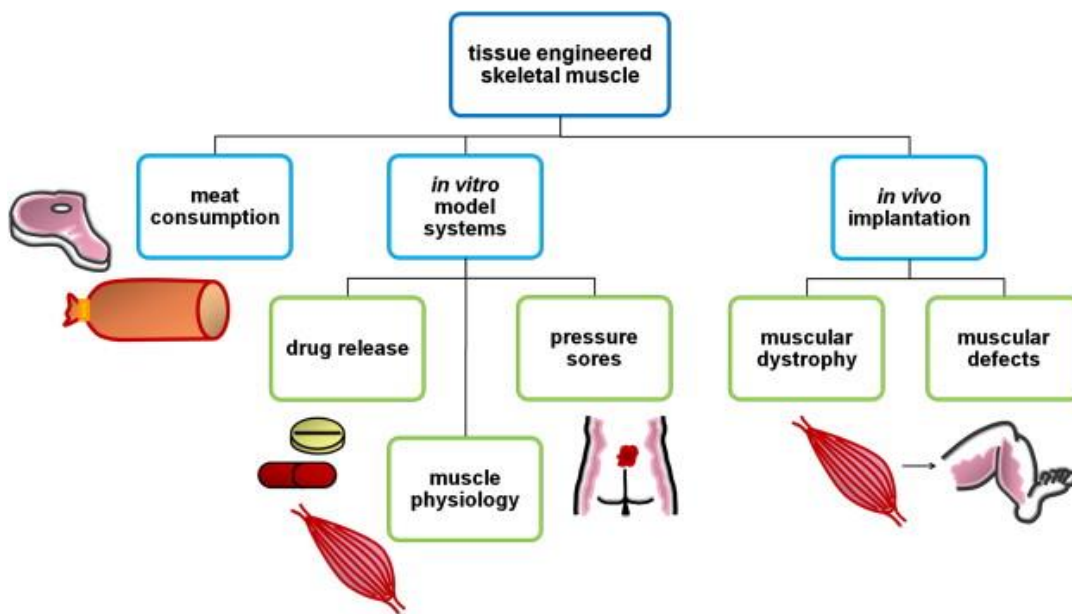


Engineering Muscle Cells (continued); Song Parodies

OUTLINE

- Example 2: dystrophin protein (connects actin with proteins on inside of cell membrane)
- Growing whole muscles “in vitro” (= “in glass” = outside a living organism)
- Writing song parodies: “Hound Dog” as an example

Figures below are from M.L.P. Langelaan et al., “Meet the new meat: tissue engineered skeletal muscle,” *Trends in Food Science & Technology* **21**: 59-66, 2010



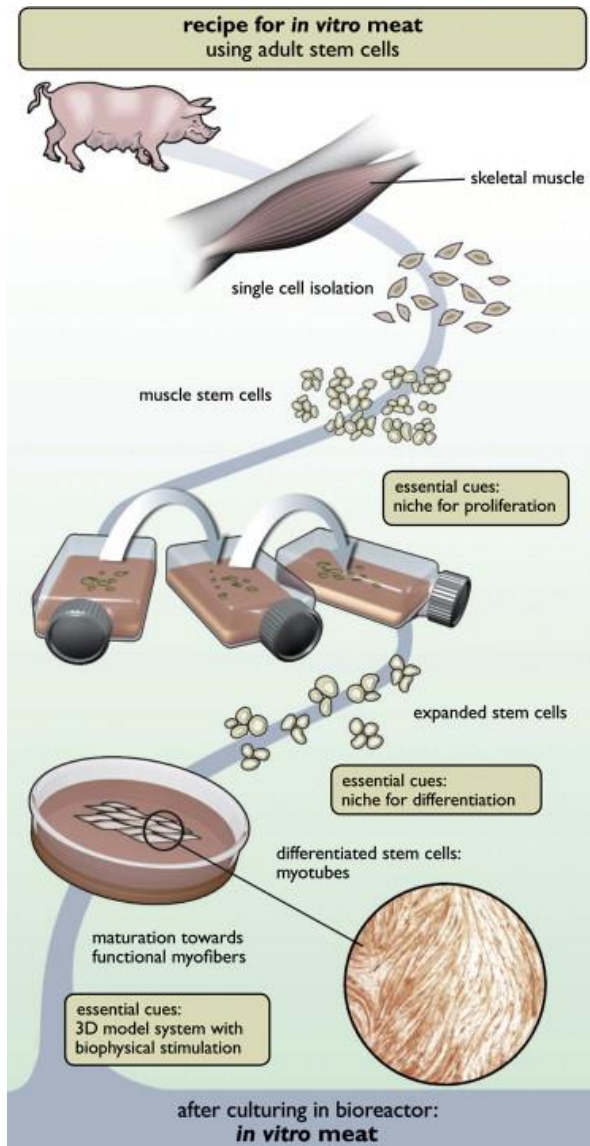


Figure from:
 M.L.P. Langelaan et al., “Meet the new meat: tissue engineered skeletal muscle,” *Trends in Food Science & Technology* **21**: 59-66, 2010

bar	1	and	2	and	3	and	4	and
12		You	ain't		noth	in'	but	a
1	hound			dog				
2				cry		in'	all	the
3	time.							
4		You	ain't		noth	in'	but	a
5	hound				dog			
6				cry		in'	all	the
7	time.							
8						You	ain't	
9	nev	er	caught	a	rab	bit	and	You
10	ain't		no		friend		of	mine.
11								
12			They	said		you	was	
1	high		class...					