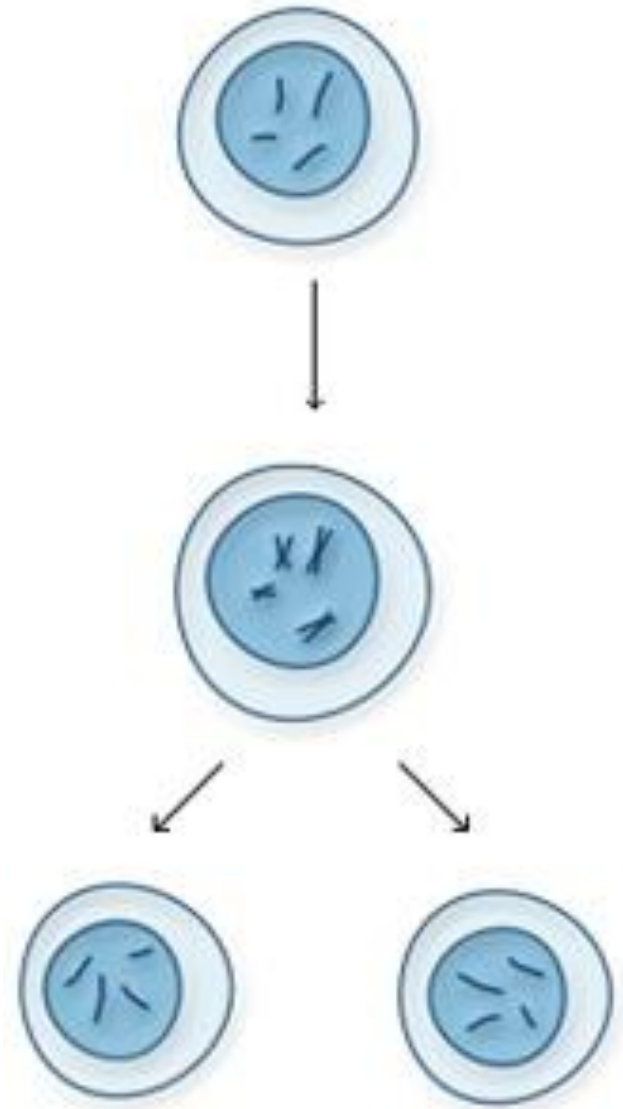


New cell biology subunit:

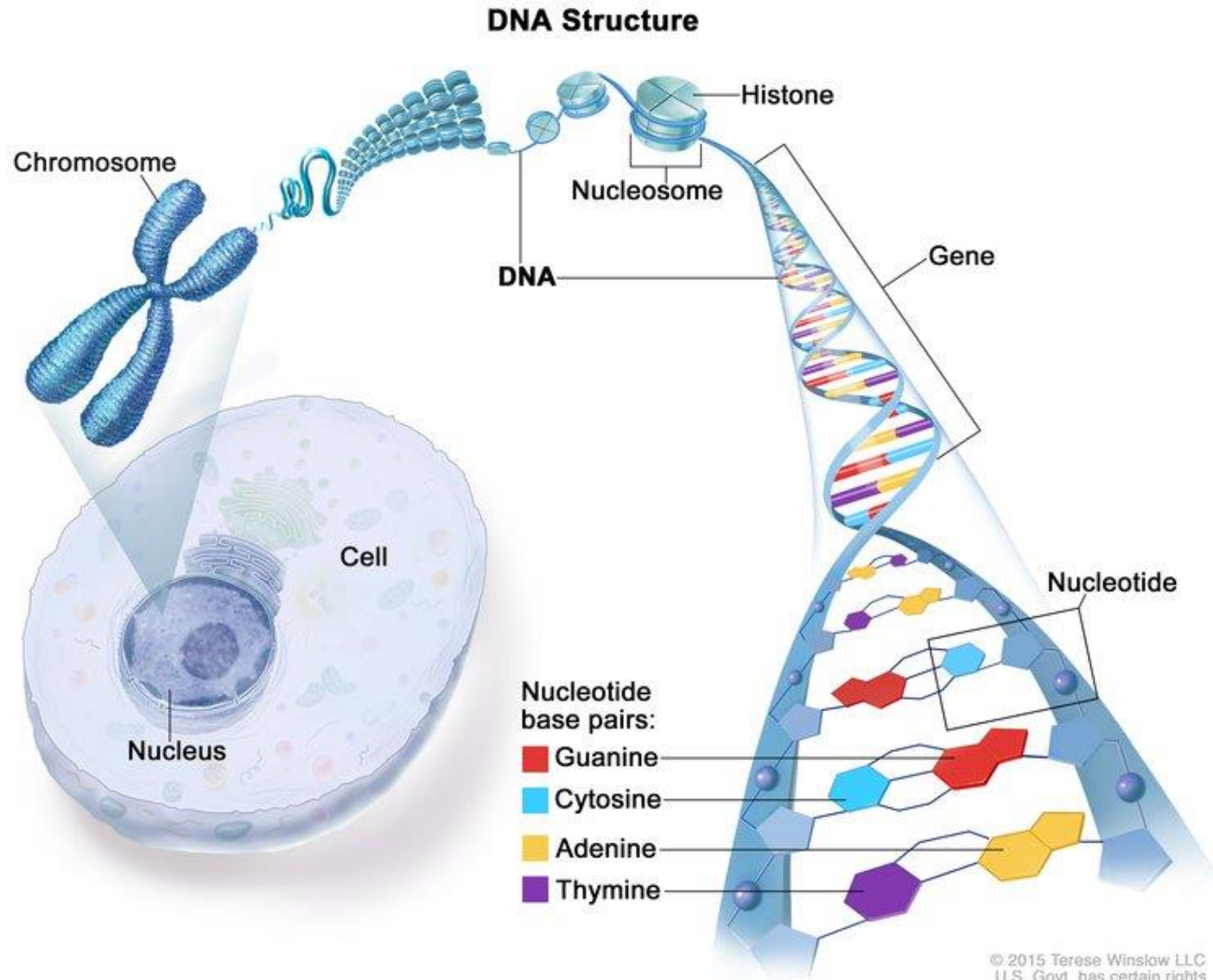
- Cell Parts (Organelles)
- Diffusion
- Photosynthesis & Respiration
- **Cell Division**

LO: Model mitosis

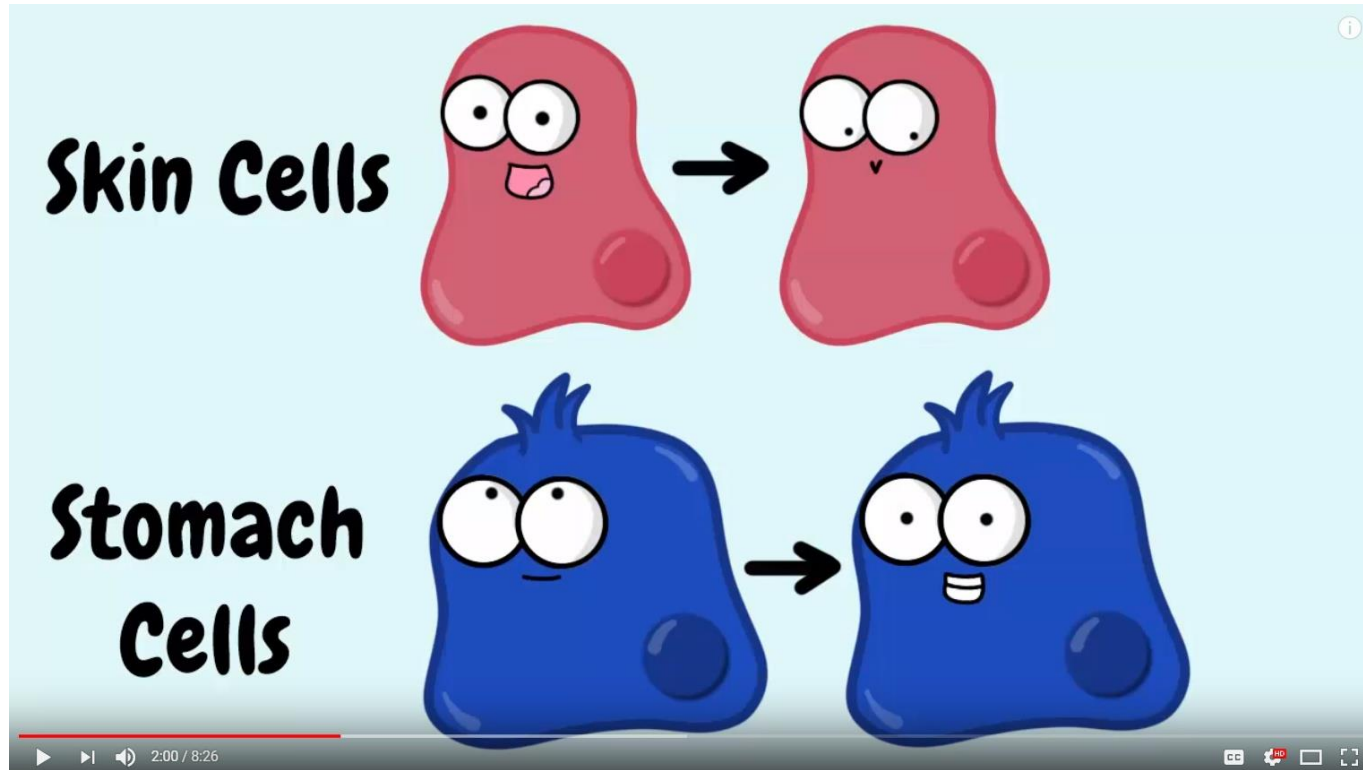
SLE: Meet NGSS



Cell parts and cell division



The Amoeba Sisters divide and conquer mitosis



- <https://www.youtube.com/watch?v=f-ldPgEfAHI>

In the time remaining . . .

- Complete the Amoeba Sisters worksheet on mitosis.
 - Include your name!
 - For mitosis drawings
 - Use 3 pairs of chromosomes (small, medium, large)
 - Provide labels as directed
- If you have extra time, read textbook pages 42-45 and supplement your notes.
 - Definitions of mitosis and cytokinesis
 - Stages of mitosis

Cell Division, Day 2

LO: Model mitosis

SLE: Meet NGSS

- Let's clean up our notes!

Modeling the cell cycle

- If the whole classroom is a cell....
 - Chromosomes
 - Nucleus
 - Chromosome duplication

Mnemonic devices for stages of cell cycle?

- Amoeba Sisters:
 - P => ???
 - M => “middle” (chromosomes move to **middle** of cell)
 - A => “away” (chromosomes move **away** from each other)
 - T => “two” (**two** new nuclei/cells are forming)
- Interphase, Prophase, Metaphase, Anaphase, Telophase, Cytokinesis = IPMATC
- Make a phrase/sentence with words starting with IPMATC?

Cell Division, Day 3 (Oct. 13)

LO: Model mitosis; SLE: Meet NGSS

- Graham cracker mitosis
- Worksheet: cell division & cancer drugs
- Quiz Monday (10/16) on the cell cycle
- Questions while studying over the weekend?
 - gcrowther@st-johnschool.org