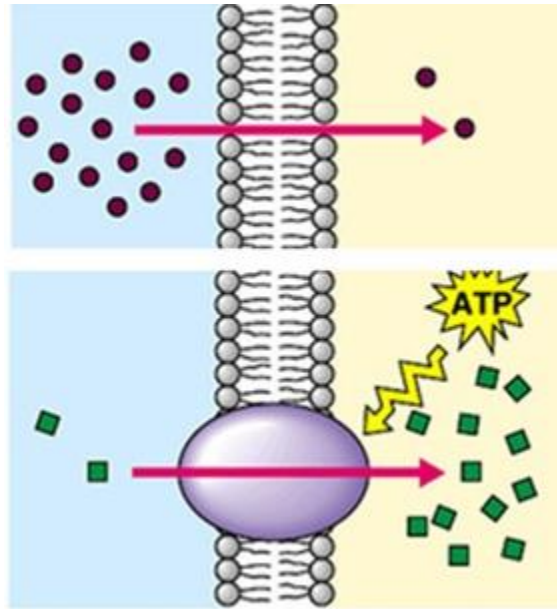


New unit:

# Cell Biology!

**Crossing cell membranes:**  
How do nutrients get into cells?



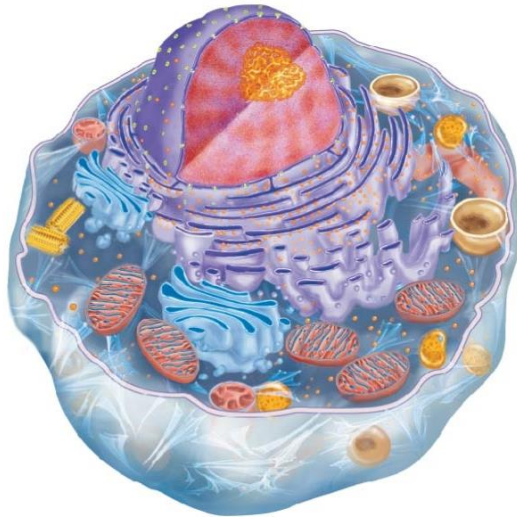
**Genes & heredity:**  
Why are my eyes blue?



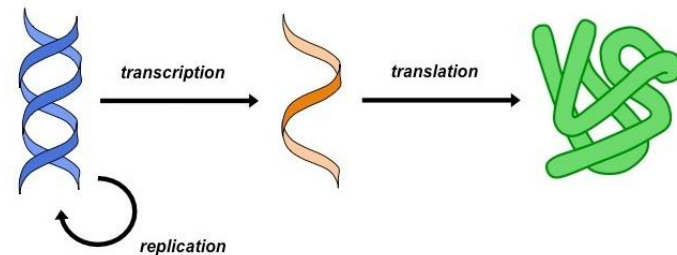
Genotype = bb

Genotype = Bb or BB

**Cell parts:**  
Why can plants use solar energy when we can't?

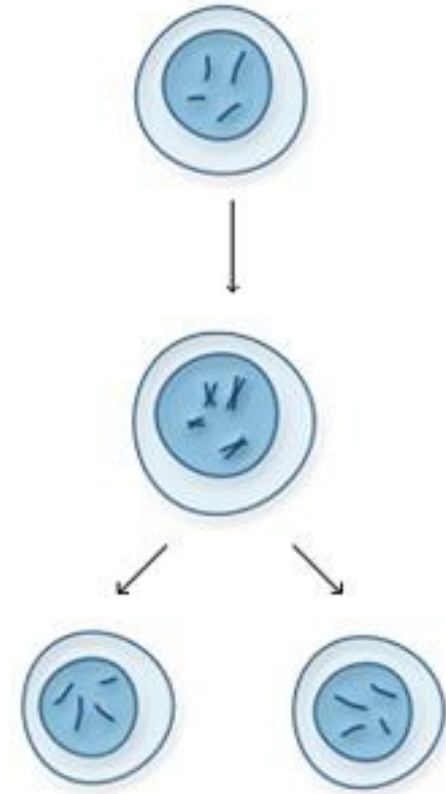


**Genes to proteins:**  
What exactly does a gene DO?



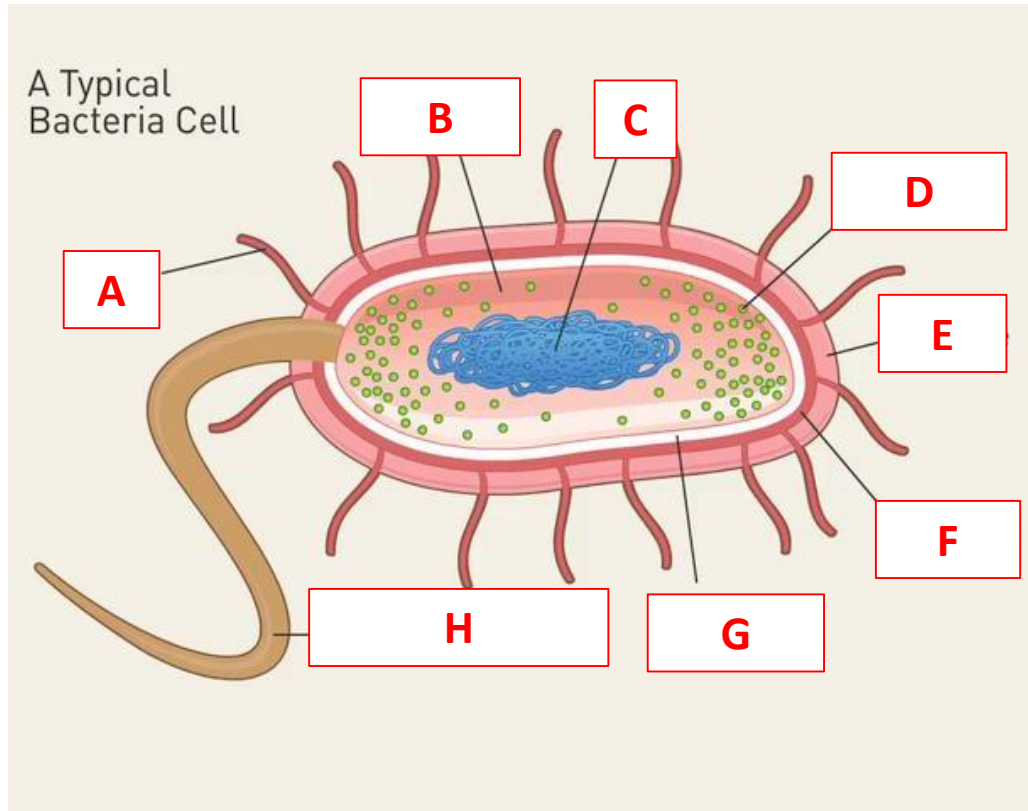
# Semi-review: Cells

- “Cell Theory” – 3 parts



- Musical Version (by Jeramey Tamez):  
<https://www.youtube.com/watch?v=ovjfNBSIOc4>

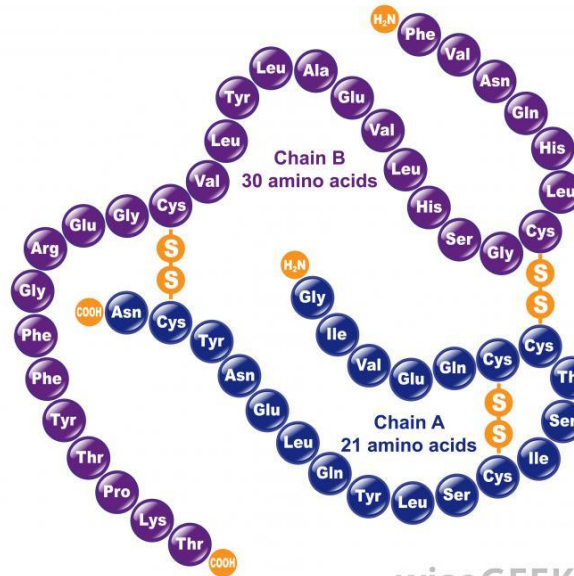
# Bacterial cells vs. plant/animal cells



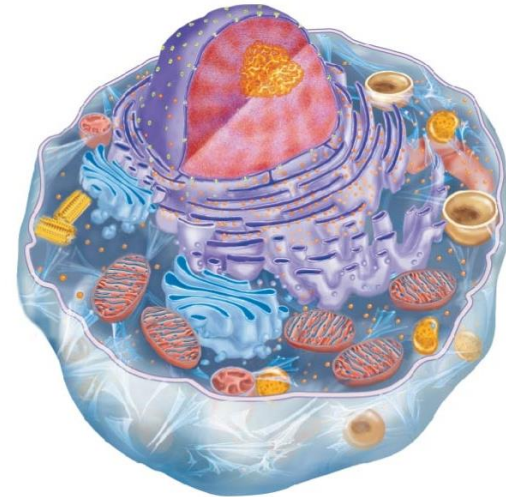
# Service Dog



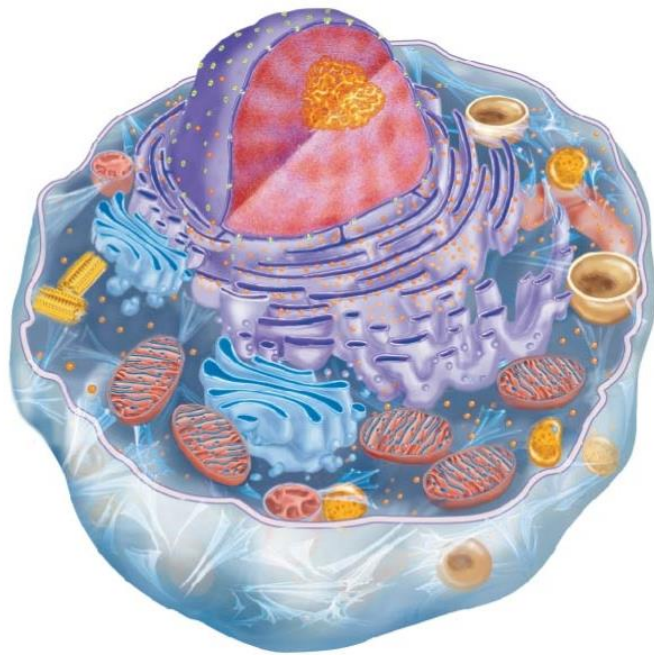
# Human Insulin











# Organelles



# Today's focus: cell parts (organelles)



	<b>Nucleus</b>		<b>Mitochondria</b>
	<b>Ribosome</b>		<b>Chloroplast</b>
	<b>Endoplasmic reticulum</b>		<b>Vacuole</b>
	<b>Golgi complex</b>		<b>Lysosome</b>

## Worksheet:

How is a cell that produces protein hormones (insulin, for example) like a manufacturing plant?