

# Phire® Plant Direct PCR Kit

## Product code:

F-130, 200 PCR reactions 50 µl each

The Dilution Buffer is sufficient for 250 dilution reactions 20 µl each.

Stable for one year from the packaging date. Store the kit at -20°C. The Dilution Buffer can also be stored at +4°C once it is thawed.

## 1. Introduction

Finnzymes' Phire® Plant Direct PCR Kit is designed to perform PCR directly from plant leaves and seeds without prior DNA purification. Fresh plants, plant material stored at +4°C or frozen are all suitable templates for this kit, as well as plant material stored on commercially available cards such as Whatman 903® and FTA® Cards. A list of plants tested with this kit is available at [www.finnzymes.com/directpcr](http://www.finnzymes.com/directpcr).

The kit employs Phire® Hot Start II DNA Polymerase, a specially engineered enzyme with a DNA-binding domain that enhances the processivity of the polymerase. Phire Hot Start II DNA Polymerase also exhibits extremely high resistance to many PCR inhibitors found in plants.

The Phire Plant Direct PCR Kit contains reagents and tools for two alternative methods: direct and dilution protocols. A 0.5 mm Harris Uni-Core™ puncher and a compatible Harris Cutting Mat™ are included for convenient sample handling. Dilution Buffer is included for optional sample treatment before PCR (see 'Dilution protocol' in Section 4). It can be used to treat larger/more difficult samples (e.g. more fibrous or latex-containing samples), or when multiple PCR reactions are performed from a single sample. It is also a useful choice when longer DNA fragments (> 1 kb) are amplified. The kit includes control primers for amplification of a highly conserved region of chloroplast DNA.<sup>1</sup> The kit is recommended for end-point PCR protocols.

### Important notes:

- Clean the sampling tools between each sample (see Section 4.2)
- Eject the sample disc into a PCR reaction instead of an empty tube.
- Use the dilution protocol for difficult samples, for long amplicons or for performing multiple reactions from the same sample.
- Use 98°C for denaturation.
- The annealing rules are different from many common DNA polymerases (such as *Taq* DNA polymerases). Read Section 6.2 carefully.
- For extension, use 20 s for amplicons < 1 kb or 20s/kb for amplicons >1kb.

## 2. Package information

Component	F-130
Phire® Hot Start II DNA Polymerase	200 µl
2x Phire® Plant PCR Buffer (includes dNTPs and MgCl <sub>2</sub> )	5 x 1 ml
Control primer mix (25 µM each)	40 µl
Dilution Buffer	5 ml
Harris Uni-Core™ 0.50 mm	1
Harris Cutting Mat™	1

Material safety data sheet (MSDS) is available at [www.finnzymes.com](http://www.finnzymes.com).

## 3. Guidelines for PCR

Carefully mix and spin down all tubes before opening to ensure homogeneity and improve recovery. The PCR setup can be performed at room temperature. **Always add the plant sample last to the reaction.** Read Section 4 carefully for sampling guidelines.

Table 1. Pipetting instructions.

Components	20 µl reaction	50 µl reaction	Final conc.
H <sub>2</sub> O	add to 20 µl	add to 50 µl	
2x Phire® Plant PCR Buffer	10 µl	25 µl	1x
primer A	x µl	x µl	0.5 µM
primer B	x µl	x µl	0.5 µM
Phire® Hot Start II DNA Polymerase	0.4 µl	1 µl	
Plant tissue (see Section 4)			
Direct protocol	0.5 mm punch/ small sample of seed	0.5 mm punch/ small sample of seed	
Dilution protocol	0.5 µl	1.25 µl	

Table 2. Recommended cycling protocols.

Cycle step	2-step protocol		3-step protocol		Cycles
	Temp.	Time	Temp.	Time	
Initial denaturation	98°C	5 min	98°C	5 min	1
Denaturation	98°C	5 s	98°C	5 s	40
Annealing (see 6.2)	-	-	X°C	5 s	
Extension (see 6.3)	72°C	20 s ≤ 1 kb 20 s/kb >1 kb	72°C	20 s ≤ 1 kb 20 s/kb >1 kb	
Final extension	72°C 4°C	1 min hold	72°C 4°C	1 min hold	1

## 4. Guidelines for sample handling

To obtain small and uniform samples, we recommend using the Harris tools provided in the kit for sampling. The Harris Uni-Core may be disposed of after use or cleaned and reused up to 500 times, depending on the thickness and firmness of the sample material. If the puncher is to be reused, it is very important to clean the cutting edge properly to prevent cross-contamination between samples (see Section 4.2 for cleaning instructions). The Harris Cutting Mat provides the best possible cutting surface for Harris Uni-Core. It is made of inert self-healing material and has two cutting surfaces. The cutting mat can be reused several hundred times, but it should be cleaned between each sample to prevent cross-contamination (see Section 4.2). The Harris tools are also available separately from Finnzymes.

### 4.1 The use of Harris Uni-Core

The cutting edge of Harris Uni-Core is very sharp. Therefore, special attention is required when working with this puncher. Please follow the instructions below.

1. Place the sample on the Harris Cutting Mat.
2. Remove the protective cap from the cutting edge of the Harris Uni-Core by twisting it gently or flipping it off using your thumb.
3. Holding the puncher firmly, push the cutting edge downward into the sample and rotate the puncher in opposite directions until it cuts through the sample. Only very gentle downward pressure is required. **Do not press the plunger while cutting.**
4. Lift the puncher away from the sample and press the plunger to eject the punch disc into a PCR reaction. Make sure that the sample drops into the PCR solution and does not stick to the tube walls.
5. Clean both the Harris Uni-Core and the Cutting Mat after every sample as described in Section 4.2.

**A video showing the sampling and cleaning procedure is available at [www.finnzymes.com/directpcr](http://www.finnzymes.com/directpcr).**

### 4.2 Cleaning the sampling tools

To prevent cross-contamination between samples, it is important to clean the cutting edge of the Harris Uni-Core between each sample. Dip the cutting edge into 2 % sodium hypochlorite\* (NaClO) solution and press the plunger up and down a few times. After rinsing, wipe the tip with a clean paper towel. The Cutting Mat should also be rinsed with 2 % sodium hypochlorite solution after each sampling.

It is recommended to include a negative control without DNA template in all assays. To monitor cross-contamination, the cleaned puncher can be dipped into the negative control sample (see Section 7.3). For more information, refer to the application protocol about avoiding cross-contamination when using the Harris Uni-Core (available at [www.finnzymes.com/directpcr](http://www.finnzymes.com/directpcr)).

### 4.3 Plant leaves

#### Direct protocol

Take a sample from the plant leaf using the 0.50 mm Harris Uni-Core puncher supported by the Cutting Mat. Place the punch disc directly into the PCR reaction (20–50 µl in volume). It is recommended to eject the disc into a liquid, rather than onto the

wall of an empty tube. Make sure that you see the sample disc in the solution. We recommend using young leaves. Fresh plant material is usually the best choice, even though plant material stored at +4°C, frozen or on commercially available cards such as Whatman 903 and FTA cards can also be used (see section 4.5). For amplifying long fragments or difficult samples using the direct protocol, a 0.35 mm punch disc may give more robust results. A Harris Uni-Core 0.35 mm is available separately (F-180S/L).

#### Dilution protocol

As with the direct protocol, young leaves are recommended. Take one small leaf or a piece of leaf (e.g. a punch approximately 2 mm in diameter) and place it in 20 µl of Dilution Buffer. **Crush the leaf sample with a 100 µl pipette tip by pressing it briefly against the tube wall.** If larger amount of leaf tissue is used (do not exceed 1 mg), increase the volume of the Dilution Buffer to 50 µl. After crushing the leaf, the solution should be greenish in colour. Spin the plant material down, and use 0.5 µl of the supernatant as a template for a 20 µl PCR reaction. The required volume of the supernatant may vary depending on the plant material used and the volume used for the dilution.

### 4.4 Plant seeds

#### Direct protocol

Using a clean scalpel, remove the seed coat and cut a small sample of the seed (approximately the size of this dot •) supported by the Cutting Mat. Place the sample directly into the PCR reaction (20–50 µl in volume). Note that it is recommended to use dehulled seeds. For very small seeds (such as *Arabidopsis*), use 1–2 whole seeds and place them directly into the PCR reaction.

#### Dilution protocol

Cut a small sample of the dehulled seed by using a scalpel (approximately the size of this dot •) and place it directly into 20 µl of Dilution Buffer. Briefly vortex the tube and incubate at room temperature for 3 min. Make sure that the seed sample is covered with Dilution Buffer. Spin briefly and use 0.5 µl of the supernatant as a template for a 20 µl PCR reaction.

### 4.5 Plant material stored on commercially available storage cards, e.g. Whatman 903® and FTA® Cards

#### Direct protocol

Use the 0.50 mm Harris Uni-Core to cut a disc from the sample in the storage card. Place the punch disc directly into a 50 µl PCR reaction. For amplifying long fragments or difficult samples, a 0.35 mm punch disc may give more robust results. A Harris Uni-Core 0.35 mm is available separately (F-180S/L).

## 5. Notes about reaction components

### 5.1 Enzyme

Phire Hot Start II DNA Polymerase possesses the following activities: 5'→3' DNA polymerase activity and a weak 3'→5' exonuclease activity. Phire Hot Start II DNA Polymerase produces blunt ends and therefore blunt end cloning is recommended. If TA cloning is required, it can be performed by adding A overhangs to the blunt PCR product with DyNAzyme™ II DNA Polymerase (F-501), for example (protocol available at [www.finnzymes.com](http://www.finnzymes.com)).

\*Never mix sodium hypochlorite with acids or ammonia-based cleaners.

## 5.2 Phire Plant PCR Buffer

The 2x Phire Plant PCR Buffer has been optimized for Direct PCR from plant material. It contains the dNTPs and provides 1.5 mM MgCl<sub>2</sub> concentration in the final reaction.

## 5.3 Dilution Buffer

The Dilution Buffer has been optimized to release DNA from a wide variety of different sample materials such as plant leaves and seeds. This buffer is also suitable for storing the DNA sample for short periods of time at +4°C. For long term storage, it is recommended to transfer the supernatant into a new tube and store at -20°C. The Dilution Buffer is sufficient for 250 dilution reactions 20 µl each.

## 5.4 Primers

The recommendation for final primer concentration is 0.5 µM. The results from primer T<sub>m</sub> calculations can vary significantly depending on the method used. Always use the T<sub>m</sub> calculator and instructions on Finnzymes' website ([www.finnzymes.com](http://www.finnzymes.com)) to determine the T<sub>m</sub> values of primers and optimal annealing temperature.

# 6. Notes about cycling conditions

## 6.1 Initial denaturation

In Direct PCR protocols, the initial denaturation step is extended to 5 minutes to allow the lysis of cells, making genomic DNA available for PCR.

## 6.2 Primer annealing

Note that the optimal annealing temperature for Phire Hot Start II DNA Polymerase may differ significantly from that of *Taq*-based polymerases. Always use the T<sub>m</sub> calculator and instructions on Finnzymes' website ([www.finnzymes.com](http://www.finnzymes.com)) to determine the T<sub>m</sub> values of primers and optimal annealing temperature. As a basic rule, for primers > 20 nt, anneal for 5 seconds at a T<sub>m</sub> +3°C of the lower T<sub>m</sub> primer. For primers ≤ 20 nt, use an annealing temperature equal to the T<sub>m</sub> of the lower T<sub>m</sub> primer. In some cases, it may be helpful to use a temperature gradient to find the optimal annealing temperature for each template-primer pair combination. The annealing gradient should extend up to the extension temperature (two-step PCR). Two-step cycling without an annealing step is recommended for high-T<sub>m</sub> primer pairs (T<sub>m</sub> at least 69–72°C).

## 6.3 Extension

The extension is performed at 72°C. The recommended extension time is 20 seconds for amplicons ≤ 1 kb, and 20 s/kb for amplicons >1 kb.

# 7. Control reactions

## 7.1 Direct PCR control reaction using the control primer mix

We recommend performing Direct PCR control reactions with both direct and dilution protocols using the control primers supplied with this kit. As a template, use the same plant material as in the actual experiment. If the PCR using control primer mix is not working, the plant sample may not be suitable for Direct PCR.

Control primers are supplied as a mix of primers in H<sub>2</sub>O that amplify a 297 bp fragment of a highly conserved region of chloroplast DNA. The control primer mix has been validated with a large number of species (refer to the list of tested plants at [www.finnzymes.com/directpcr](http://www.finnzymes.com/directpcr)). Each primer concentration is 25 µM.

Primer #1 (20-mer)

5'- AGTTCGAGCCTGATTATCCC -3'

Melting point: 62.4°C

Primer #2 (20-mer)

5'- GCATGCCGCCAGCGTTCATC -3'

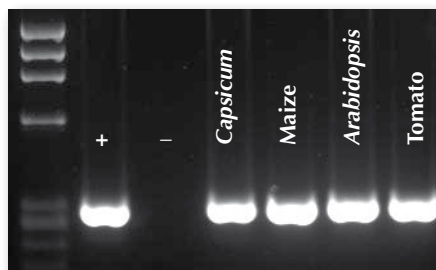
Melting point: 75.5°C

**Table 3.** Pipetting instructions for control reactions.

Component	20 µl reaction	Final concentration
H <sub>2</sub> O	add to 20 µl	
2x Phire® Plant PCR Buffer	10 µl	1x
Control primer mix	0.4 µl	0.5 µM
Phire® Hot Start II DNA Polymerase	0.4 µl	
Plant tissue (see Section 4) Direct protocol Dilution protocol	0.5 mm punch/ small sample of seed 0.5 µl	

**Table 4.** Cycling instructions for control reactions.

Cycle step	Temp.	Time	Cycles
Initial denaturation	98°C	5 min	1
Denaturation	98°C	5 s	40
Annealing	62°C	5 s	
Extension	72°C	20 s	
Final extension	72°C 4°C	1 min hold	1



**Figure 1.** Amplification of the 297 bp control DNA fragment directly from *Capsicum*, maize, *Arabidopsis* and tomato leaves. A 0.50 mm Harris Uni-Core was used to cut a sample disc from the plant leaves. The samples were placed directly into 20 µl PCR reactions. After PCR, 5 µl of loading buffer was added to the reaction and 15 µl was used for gel electrophoresis. + denotes the control reaction with purified plant DNA and - is the no-template control.

## 7.2 Positive control reaction with purified DNA

When optimizing the reactions, it is recommended to perform a positive control with purified DNA to ensure that the PCR conditions are optimal. If the positive control with purified DNA fails, the PCR conditions should be optimized before continuing further (see Section 8).

## 7.3. Negative control

It is recommended to add a no-template control to all Direct PCR assays. To monitor the efficiency of cleaning the Harris Uni-Core, the cleaned puncher can be dipped into the negative control sample. A second negative control performed without dipping the puncher is recommended to control other sources of contamination.

## 8. Troubleshooting

No product at all or low yield
<p><b>General</b></p> <p>If the positive control with purified DNA using your own primers is not working:</p> <ul style="list-style-type: none"><li>• Make sure the cycling protocol was performed as recommended.</li><li>• Optimize annealing temperature.</li><li>• Check primer design.</li></ul>
<p><b>Direct protocol</b></p> <p>If the positive control with purified DNA and the Direct PCR control reaction with control primers are working, but the actual samples yield no product:</p> <ul style="list-style-type: none"><li>• Increase the PCR reaction volume to 50 µl or use a smaller punch (e.g. Harris Uni-Core 0.35 mm).</li><li>• Increase the number of cycles.</li><li>• Use dilution protocol for amplification of large or difficult samples and long DNA fragments.</li></ul>
<p><b>Dilution protocol</b></p> <p>If the positive control with purified DNA and the Direct PCR control reaction with control primers are working, but the actual samples yield no product:</p> <ul style="list-style-type: none"><li>• Dilute the supernatant (from the sample treated with Dilution Buffer) 1:10 and/or 1:100 with H<sub>2</sub>O/TE buffer, and use 0.5 µl as a template in PCR.</li><li>• Try both crushing and not crushing the sample.</li><li>• Incubate the sample in Dilution Buffer for 3 min at room temperature and use 0.5 µl as a template (1:1 and 1:10 dilution) in a 20 µl reaction.</li><li>• Use smaller sample size or increase the volume of Dilution Buffer.</li></ul>
Non-specific products - High molecular weight smears
<ul style="list-style-type: none"><li>• Make sure the extension time used was not too long (&gt;20 s/kb).</li><li>• Increase the annealing temperature or perform a temperature gradient PCR.</li><li>• Reduce the total number of cycles.</li><li>• Decrease primer concentration.</li><li>• Make sure the cutting tools were properly cleaned with 2 % sodium hypochlorite. Include a negative control.</li></ul>
Non-specific products - Low molecular weight discrete bands
<ul style="list-style-type: none"><li>• Increase the annealing temperature or perform a temperature gradient PCR.</li><li>• Shorten extension time.</li><li>• Decrease primer concentration.</li><li>• Reduce the total number of cycles.</li><li>• Design new primers.</li><li>• Make sure the cutting tools were properly cleaned with 2 % sodium hypochlorite. Include a negative control.</li></ul>

## 9. References

1. Demasure B. et al. (1995) *Molecular Ecology* 4: 129–131.

## Shipping and storage

Phire Plant Direct PCR Kit is shipped on gel ice. Upon arrival, store the components at –20°C. The Dilution Buffer can also be stored at +4°C once it is thawed. The kit is stable for one year from the packaging date when stored and handled properly.

## Warranty

Finnzymes Oy warrants that its products will meet the specifications stated on the technical data section of the data sheets, and Finnzymes Oy agrees to replace the products free of charge if the products do not conform to the specifications. Notice for replacement must be given within 60 days of receipt. In consideration of the above commitments by Finnzymes Oy, the buyer agrees to and accepts the following conditions:

- That this warranty is in lieu of all other warranties, express or implied;
- That **ALL WARRANTIES OF MERCHANTABILITY OR OF FITNESS FOR A PARTICULAR PURPOSE ARE HEREBY EXCLUDED AND WAIVED**;
- That the buyer's sole remedy shall be to obtain replacement of the product free of charge from Finnzymes Oy; and
- That this remedy is in lieu of all other remedies or claims for damages, consequential or otherwise, which the buyer may have against Finnzymes Oy.

### Exclusive terms of sale

Finnzymes Oy does not agree to and is not bound by any other terms or conditions, unless those terms and conditions have been expressly agreed to in writing by a duly authorised officer of Finnzymes Oy. Prices are subject to change without notice.

### Recommended guidelines for safe use of the products

Finnzymes Oy recommends that the buyer and other persons using the products follow the Guidelines for Research Involving Recombinant DNA Molecules (NIH guidelines) Federal Register, July 5, 1994 (59 FR 34496) and any amendments thereto. Finnzymes Oy disclaims any and all responsibility for any injury or damage which may be caused by the failure of the buyer or any other person to follow said guidelines.

### Research use only

Since these products are intended for research purposes by qualified persons, the Environmental Protection Agency does not require us to supply Premanufacturing Notice.

### Notice to user

The information presented here is accurate and reliable to the best of our knowledge and belief, but is not guaranteed to be so. Nothing herein is to be construed as recommending any practice or any product in violation of any patent or in violation of any law or regulation. It is the user's responsibility to determine for himself or herself the suitability of any material and/or procedure for a specific purpose and to adopt such safety precautions as may be necessary.

### Notice to Purchaser

Limited license. The purchase price of this product includes a limited, non-transferable license under U.S. and foreign patents owned by BIO-RAD Laboratories, Inc., to use this product. No other license under these patents is conveyed expressly or by implication to the purchaser by the purchase of this product.

### Notice to Purchaser of Phusion® DNA Polymerases

Limited license. The purchase price of this product includes a limited, non-transferable license under U.S. and foreign patents (5,500,363 and 5,352,778) owned by New England Biolabs, Inc. to use this product. No other license under these patents is conveyed expressly or by implication to the purchaser by the purchase of this product.

This product is licensed under US Patent 5,416,149 owned by TaKaRa Shuzo Co. Ltd.

Phire® and DyNAzyme™ are trademarks or registered trademarks of Finnzymes Oy, a Thermo Fisher Scientific company. Affibody® is a registered trademark of Affibody AB, Sweden. Harris Uni-Core™ and Harris Cutting Mat™ are trademarks of Shunderson Communications Inc. FTA® and 903® are registered trademarks of companies within the Whatman Group.

This product is sold under license from Affibody AB, Sweden.

The quality system of Finnzymes Oy is certified according to standard SFS-EN ISO9001:2008.

Version 1.3, April 2010



FINNZYMES OY  
Keilaranta 16 A, 02150 Espoo, Finland  
Tel. +358 9 2472 3010  
Fax +358 9 2472 3200  
[www.finnzymes.com](http://www.finnzymes.com)