

# Characterization of bacterial endophytes of sweet potato plants

Zareen Khan · Sharon L. Doty

Received: 21 July 2008 / Accepted: 22 January 2009  
© Springer Science + Business Media B.V. 2009

**Abstract** Endophytic bacteria associated with sweet potato plants (*Ipomoea batatas* (L.) Lam.) were isolated, identified and tested for their ability to fix nitrogen, produce indole acetic acid (IAA), and exhibit stress tolerance. Eleven different strains belonging to the genera, *Enterobacter*, *Rahnella*, *Rhodanobacter*, *Pseudomonas*, *Stenotrophomonas*, *Xanthomonas* and *Phyllobacterium*, were identified. Four strains were shown to produce IAA (a plant growth hormone) and one strain showed the ability to grow in nitrogen free medium and had the nitrogenase subunit gene, *nifH*. To determine if IAA production by the endophytes had any role in protecting the cells against adverse conditions, different stress tests were conducted. The IAA producer grew well in the presence of some antibiotics, UV and cold treatments but the response to pH, osmotic shock, thermal and oxidative treatments was the same for both the IAA producer and the no IAA producer. To determine if IAA produced by the strains was biologically relevant to plants, cuttings of poplar were inoculated with the highest IAA producing strain. The inoculated cuttings produced roots sooner and grew more rapidly than uninoculated cuttings. These studies indicate that endophytes of sweet potato plants are beneficial to plant growth.

**Keywords** *Ipomoea batatas* · Sweet potato · Plant-microbe interaction · Indole acetic acid (IAA) · Nitrogen fixation · Stress · Plant growth promotion

## Introduction

Endophytes are microorganisms that reside within the inner parts of plants without causing any disease symptoms (Hallmann et al. 1997). Cultivable endophytic communities can be isolated after surface sterilization of the plant material. Endophytes exist in a range of tissue types within a broad range of plants, colonizing the plant systemically with bacterial colonies and biofilms, residing latently in intercellular spaces, inside the vascular tissue or within cells (Ulrich et al. 2008). Although the plant-endophyte interaction has not been fully understood, it has been reported that many isolates provide beneficial effects to their hosts like preventing disease development by synthesizing novel compounds and antifungal metabolites. Investigations of biodiversity of endophyte strains for novel metabolites may identify new drugs for the treatment of human, plant and animal diseases (Strobel et al. 2004). Several bacterial endophytes have been shown to support plant growth and increase nutrient uptake by providing phytohormones (Jacobson et al. 1994), low molecular weight compounds (Frommel et al. 1991), enzymes (Glick et al. 1998), antimicrobial substances like antibiotics (Banger and Thomashow 1996) and siderophores (O'Sullivan and

---

Responsible Editor: Jesus Mercado-Blanco.

---

Z. Khan · S. L. Doty (✉)  
College of Forest Resources, University of Washington,  
Seattle, WA 98195-2100, USA  
e-mail: sldoty@u.washington.edu

O’Gara 1992). Some endophytes offer increased resistance to pathogens thus making them ideal candidates for biological control (Madhaiyan et al. 2004). Other beneficial effects of endophytes to plants include nitrogen fixation (Barraquio et al. 1997), increased drought resistance (Nowak et al. 1995), thermal protection (Redman et al. 2002), survival under osmotic stress (Creus et al. 1998) and more recently, their potential for enhanced degradation of several pollutants has also been investigated (Reviewed in Doty 2008).

Sweet potato (*Ipomoea batatas* (L.) Lam.) is a resilient, easily propagated crop, growing well in infertile and nitrogen (N) poor soils. Over 95% of the global sweet potato crop is produced in developing countries (Reiter et al. 2003). It has also shown potential to tolerate and absorb heavy metal pollutants like lead, iron and cadmium, as well as mixed pollutants contained in landfill leachate (deAraujo et al. 2004). In this paper we focus on the culturable bacterial endophytes of sweet potato and their possible contribution in the growth of the plant.

## Materials and methods

### Plant material and isolation of bacterial endophytes

Sweet potatoes were purchased from a grocery store in Seattle, WA. In order to generate plants, in each sweet potato a few inoculating sticks were inserted and the potato was hung in a beaker of water, and placed under light. When shoots emerged from the potato and reached approximately 15 cm in height, the rooted 10d old plants were transferred to pots containing non sterile, 1:1 (w/w) ProMix (Premier Horticulture, Quakertown, PA) and perlite (Therm-O-Rock, Chandler, AZ). Four sweet potatoes were used to generate the plants and were designated as SP1, SP2, SP3 and SP4. Cuttings of ~8 cm in length were surface sterilized with 10% bleach for 10 min, 1% iodophor for 5 min and rinsed several times with sterile water. The ends of the explants were removed and the stems were incubated in the light for 1 w on Murashige and Skoog (MS) medium containing 0.1% phytagar (Murashige and Skoog 1962). Resulting bacteria were subcultured overnight on Luria-Bertani medium with mannitol glutamate and added salts (MG/L) (Chilton et al. 1974). Single colonies were

selected (Table 1), grown in MG/L medium overnight, and stored in 33% glycerol at  $-80^{\circ}\text{C}$  for subsequent characterization. To identify the role of sweet potato endophytes in plant growth, we generated some internally sterile plants by propagating them in MS medium containing antibiotics. The concentration of the antibiotics used was determined from previous experiments (data not shown) that was enough to kill the endophytes and not harm the plant. Validation of sterility was done by crushing the plants in sterile conditions and growing the extract on MS plates and checking for bacterial growth.

### Bacteria identification using 16S rRNA sequences

Genomic DNA was prepared using standard methods (Ausubel et al. 1995) with a cell lysis performed at  $68^{\circ}\text{C}$  for 30 min (Doty et al. 2005). PCR was performed using the universal 16S rRNA primers - 8F (5'- AGAGTTTGATCCTGGCTCAG-3') and 1492 (5'- GGTTACCTTGTTACGACTT-3') as described previously (Doty et al. 2005). The thermocycler program was  $94^{\circ}\text{C}$  for 15 s,  $44^{\circ}\text{C}$  for 15 s,  $72^{\circ}\text{C}$  for 30 s and it was repeated for 24 cycles. Samples were subjected to electrophoresis in a 1% agarose gel. The 1.5 Kb PCR products were purified using Qiagen gel extraction kit (Qiagen; Valencia, CA) subcloned into pGEM T Easy (Promega; Madison, WI) and sequenced using T7 and SP6 primer sets on the vector by the University of Washington Biochemistry Department Sequencing Facility using the Big Dye Terminator v3.1 Cycle Sequencing Kit (Applied Biosystems; Carlsbad, CA)

**Table 1** Characteristics of isolated endophytes from sweet potato

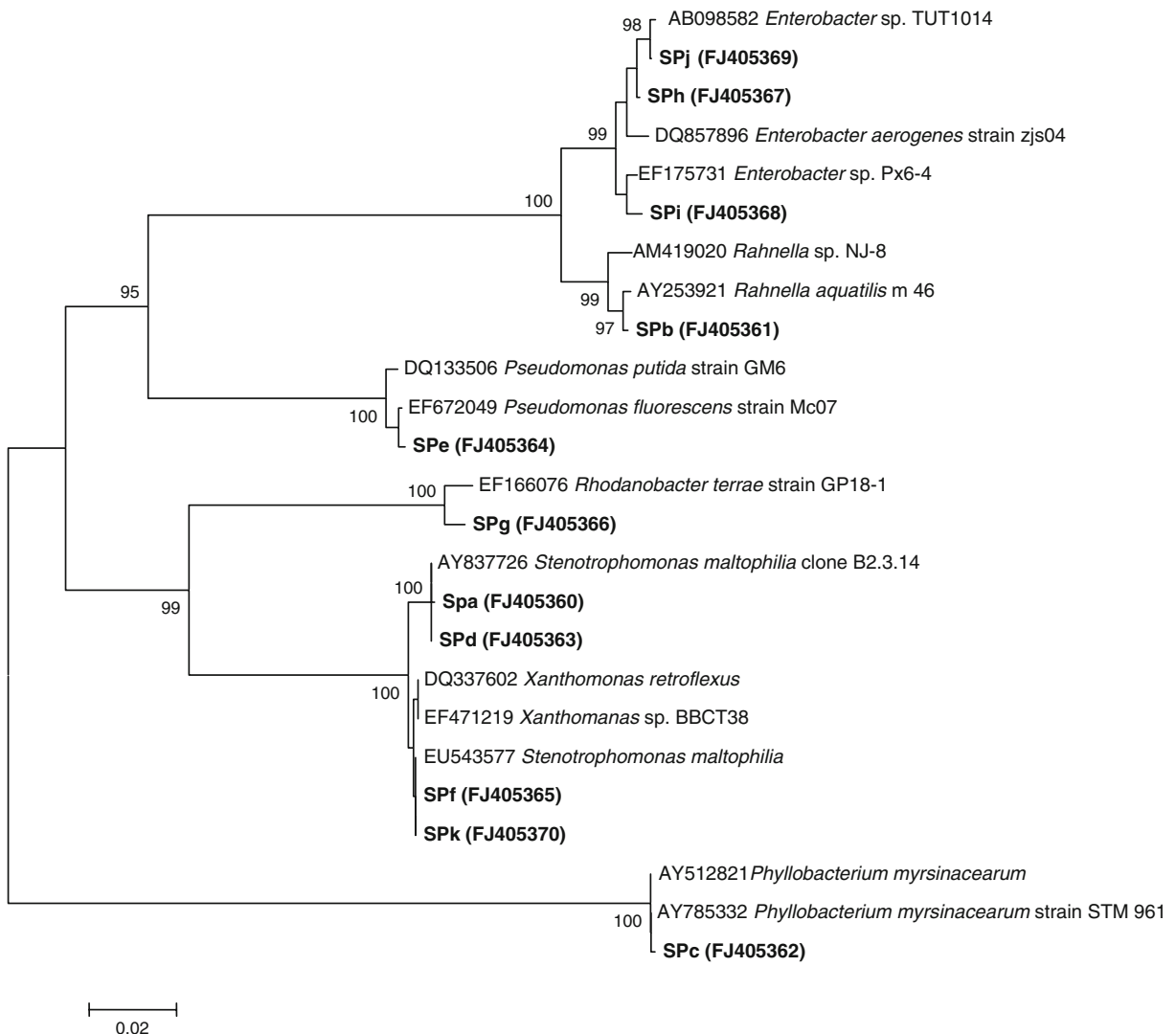
Endophyte code	Plant	Colony color on MG/L plates
SPa	SP3	White
SPb	SP3	Pink
SPc	SP2	White
SPd	SP4	White
SPe	SP3	Pale yellow
SPf	SP4	White
SPg	SP3	White
SPh	SP3	White
SPi	SP1	Yellow
SPj	SP2	White
SPk	SP4	White

and an ABI3730 XL sequencer (Applied Biosystems). The obtained sequences were assembled using the Seqman software (DNA STAR Inc.) and sequence comparisons with public databases were performed via the Internet at the National Center for Biotechnology Information site (<http://www.ncbi.nlm.nih.gov/>), by employing the BLASTN algorithm (Altschul et al. 1997). Sequences were submitted to GenBank and accession numbers were obtained (Fig. 1). Phylogenetic analysis was done using CLUSTAL W software (Thompson et al. 1994). Evolutionary distance matrix

were constructed using the algorithm of Jukes and Cantor (Thompson et al. 1994) and the evolutionary trees for the data sets were inferred from the neighbor-joining method (Saitou and Nei 1987) by using *MEGA* version 4.0.1 (Tamura et al. 2007).

#### Growth on nitrogen- limited medium

Isolates from the frozen stocks were streaked on MG/L medium and incubated at 30°C overnight. Isolated colonies were streaked on nitrogen free MS



**Fig. 1** Phylogenetic relationships among 11 isolates of endophytic bacteria (marked in bold) obtained in culture from sweet potato plants and the related bacterial species. The Neighbor-Joining dendrogram was derived from a 16S rRNA

sequence distance matrix (Jukes-Cantor). Bootstrap confidence levels greater than 95% are indicated at the internodes. GenBank accession numbers are shown in parentheses. Bar, 2 substitutions per 100 nucleotide positions

medium (Caisson MSP007; <http://www.caissonlabs.com>) containing either 3% sucrose or glucose as the carbon source, and growth was assayed after 2 d. For growth curve assays, a homogeneous inoculum from the isolated colonies in the nitrogen free MS medium was used to inoculate 25 ml of nitrogen free MS medium with either 3% sucrose or glucose. Growth was monitored using spectrophotometer and measuring the optical density at 600 nm. Statistical analysis was done using split plot ANOVA (Intercooled Stata 10.0, StataCorp LP, College Station, TX) in order to account for the multiple measures taken over time on each flask, and the replicated flasks for each sample.

### Cloning of nitrogenase gene fragments

Genomic DNA from isolates SPa and SPb was subjected to nested PCR. This technique allows an additional level of specificity utilizing two different sets of primers, one set internal to the other. PCR primers to amplify the highly conserved region of the nitrogenase subunit H gene (*nifH*) were used as described (Burgmann et al. 2004). The first set of degenerate primers (*nifH*-universal for A site and reverse site)—forward primer 5'-GCIWTITAYGGNA ARGNGG- 3' and reverse primer 5'- GCRTAIA BNGCCATCATYTC- 3'- amplified a 464 bp region of the nitrogenase gene (Burgmann et al. 2004). Several Epicenter FailSafe PCR buffer series (A, B, E, F, and G) were tried. Epicenter Pre-Mix Buffer A was then selected. The thermocycler program was 5 min at 95°C and then 11 s at 94°C, 8 s at 48°C, and 10 s at 72°C for 40 cycles, followed by a polishing step for 10 min at 72°C. One microlitre of the 25 µl sample was then used in the nested reactions. The series of nested primers described in Burgmann et al. (2004) amplified a 371 bp sub region of the *nifH* gene. The 371 bp products were gel purified and subcloned into pGEM T Easy. *Azotobacter vinelandii* DNA served as a positive control and for negative control water was used instead of DNA. Sequencing of the inserts in both directions was performed by the UW Biochemistry Department Sequencing Facility using primers for the T7 and SP6 regions of the vectors and sequence comparisons with public databases were performed via the Internet at the National Center for Biotechnology Information site (<http://www.ncbi.nlm.nih.gov/>), by

employing the BLASTN algorithm (Altschul et al. 1997).

### IAA production and root formation by endophytes

The sweet potato endophytic isolates were analyzed for IAA production. For rapid quantitative estimation in broth culture, the colorimetric method of Gordon and Weber (1951) was used. The cultures were grown in the dark for 7 d, sampled every day, centrifuged at 13000 x g for 10 min, and the production of IAA was assayed in duplicated supernatant samples. The presence of IAA in each supernatant was measured colorimetrically by adding two parts of 0.01 M FeCl<sub>3</sub> in 35% HClO<sub>4</sub> to one part of supernatant followed by reading the optical density at 530 nm after 25 min. The recorded absorbances were read off a standard curve prepared from pure IAA (Sigma-Aldrich, St. Louis, MO). The experiment was done in triplicate.

Another experiment was done to see if the IAA producing sweet potato endophytes can induce rooting in another plant species. We chose a hybrid poplar clone, INRA 717-1B4 (*Populus tremula* x *P.alba*) (Doty et al. 2007) which was difficult to root. Poplar cuttings about 8 cm were taken from the green house and surface sterilized using 10% bleach (0.615% NaClO) for 10 min and 1% iodophor for 5 min. The ends of the explants were removed and the stems were transferred to sterile culture tubes containing 10 ml of 1/2X Hoaglands solution (Hoagland and Arnon 1950) and grown for 2w. The most IAA producing endophyte, SPb (as determined from above) was streaked on an MG/L plate and grown overnight in MG/L broth. An inoculum of the endophyte (OD<sub>600</sub>=0.5) was added to five sterile tubes each containing MS growth media and one plant. Five uninoculated plants were also maintained and the tubes were incubated at 25°C for 3w with a 16 h photoperiod.

### Stress tests

To determine if the sweet potato endophytes that produced high levels of IAA exhibited increased tolerance to stress, the endophytes were exposed to harsh conditions including heat and cold shock, UV irradiation, osmotic and heat shock, oxidative stress and antibiotic resistance. SPb, the most IAA producing endophyte was used for this study. SPa, that did

not produce any IAA was used as a negative control. Cells were grown aerobically at 30°C in MG/L media. Maximum IAA production was observed in 2 days. At this point the cells were exposed to different stress tests. UV irradiation of cell suspensions (10 ml) was performed in the sterile hood exposing the cells to UV light for 2 h. For osmotic shock, the cells were incubated with 3 M sodium chloride for up to 2 h at 30°C. For acid stress, cells were grown at pH 3 and 4 for 2 h at 30°C. For oxidative stress, cells were treated with 3% H<sub>2</sub>O<sub>2</sub> and grown for 2 h at 30°C. For heat shock cells were exposed to 75°C for 5 min by immersion of cultures in a water bath. For cold treatment, diluted cultures were plated on MG/L agar plates, and the plates were sealed in plastic bags to prevent drying, and incubated at 4°C for 1w. For antibiotic resistance the cultures were plated on MG/L amended with one of the following antibiotics (µg/ml): timentin (Tm) (250) (GlaxoSmithKline,NC), kanamycin (Km) (100) (plantMedia,Dublin,OH), ampicillin (Ap) (100) (Sigma,St.Louis,MO), chloramphenicol (Cm) (100) (Sigma,St.Louis,MO), cefatoxime (Cf) (500) (Aventis Pharmaceuticals, NJ), carbenicillin (Cb) 100 (Sigma,St.Louis,MO), and vancomycin (Vm) (30) (Abraxis, Schaumburg, IL). Growth was scored after overnight incubation of plates at 30°C.

## Results

### Identification

Eleven culturable bacterial endophytes were isolated from four sweet potato plants and characterized by comparative sequence analysis of the 16S rRNA region generated by PCR. The endophytes designated as SPa-SPk grew in 24 h except for SPg which took 2 days to form colonies. Distinct round colonies of sizes ranging from 1–3 mm and variable pigmentation (white, pink, and pale to bright yellow) were observed (Table 1). The 16S rRNA genes from most of the isolates possessed 99–100% similarity with a species already described in the GenBank. All of the strains belonged to the phylum proteobacteria, class- gammaproteobacteria with the exception of *Phyllobacterium* that belongs to the alphaproteobacteria. A phylogenetic tree based upon nucleotide substitution values is depicted in Fig. 1.

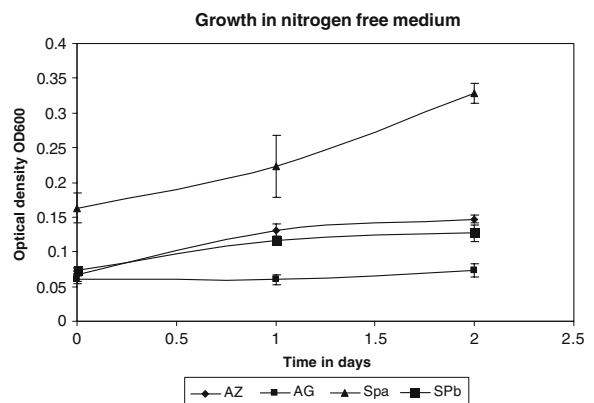
### Growth on nitrogen free medium and identification of the nitrogenase genes

As a first screen for the ability to fix nitrogen, the isolated sweet potato endophytes were streaked onto nitrogen-free medium plates with either glucose or sucrose as the carbon source. Only SPa grew when the carbon source was either sucrose or glucose; SPb grew only in the presence of sucrose. The growth curve experiments (Fig. 2) showed that SPa and SPb grew well in nitrogen free media. Statistical analysis of the data based on the primary analysis on log transformed absorbance gave strong evidence that the groups do differ between endophytes over time, with  $p < 0.0001$ .

The nested PCR approach to identify the presence of *nifH* genes resulted in an expected amplicon for isolate SPa (approx. 371 bp). This PCR product was purified, subcloned and sequenced. The *nifH* sequence of SPa was most closely related to *Azotobacter vinelandii* (99% identity). The “universal” *nifH* primers only amplified a faint band of the expected size in isolate SPb (Fig. 3). Non-specific bands were also noticed, but after being cloned and sequenced they yielded no significant match to any known sequences in the databases.

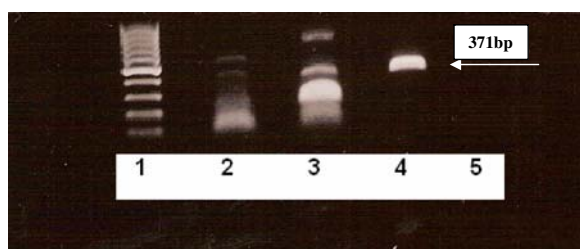
### IAA production and root induction

Four out of the eleven endophytes produced IAA (Fig. 4). Measurements of IAA of the four IAA-



**Fig. 2** Growth of sweet potato endophytes in nitrogen free medium. *Azotobacter vinelandii* (AZ) was used as a positive control. *Agrobacterium tumefaciens* (AG), which is a plant associated bacterium was used as negative control. SPa grew the best followed by SPb. The experiments were performed in duplicate and the bars indicate standard deviations





**Fig. 3** Nested PCR amplification of *nifH* gene from SPa (lane 3) and SPb (lane 2) endophytes. The molecular weight standard was a 100 bp ladder (lane 1). A strong band at 371 bp for SPa confirmed the presence of nitrogenase gene. A faint band that could not be sequenced was observed for SPb at the expected size. Other non-specific bands were also obtained which DNA sequences did not match any known sequences. *Azotobacter vinelandii* DNA served as a positive control (lane 4) and for negative control we used water (lane 5) instead of DNA

producing endophytes were significantly different ( $P < 0.05$ ) from the other seven endophytes, which did not produce any IAA. To test if the endophytes of the sweet potato plant were helping it to grow, we propagated endophyte free plants by growing them in media containing antibiotics. These plants grew poorly suggesting the role of endophytes in plant growth. Also, when the maximum IAA producing endophyte (SPb) was inoculated into a hybrid poplar (*Populus tremula* x *P. alba*), INRA 717-1B4, which is normally difficult to root, excellent growth was observed. After 3 weeks, four out of the five endophyte-inoculated plants grew 5 cm taller, and had highly branched root systems and several more leaves than the uninoculated controls (Fig. 5).

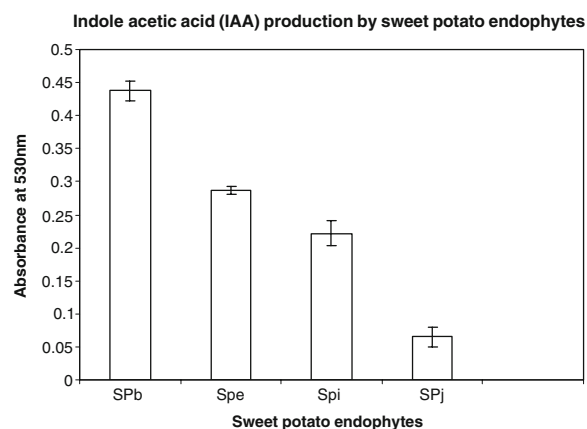
### Stress tests

It has been reported that higher amounts of IAA resulted in increased tolerance to stress, more active bacterial metabolism (Bianco et al. 2006; de Melo et al. 2004) and enhanced plant growth (Camerini et al. 2008). To determine if the sweet potato endophytes also had this characteristic, we chose SPb (maximum IAA producer) and SPH, that did not produce any IAA and was used as a negative control. Isolate SPb grew well in the presence of antibiotics including ampicillin, chloramphenicol, carbenicillin and vancomycin whereas no growth was observed when cefotaxime, timentin and kanamycin were present (Table 2). SPH did not tolerate any of the tested antibiotics. Cold and heat shock are physical stresses

that drastically modify all physico-chemical parameters of a living cell. To test whether IAA production affected cell viability at temperatures that normally prevent growth, diluted cultures were plated on agar plates and inoculated at different temperatures. Isolate SPb survived cold treatment whereas SPH did not grow. The UV survival analysis showed that the IAA producing endophyte was more resistant (more CFU) to UV irradiation compared to the negative control. Finally, responses to heat shock, low pH, osmolarity and oxidative damage were similar (Table 2).

### Discussion

Endophytes isolated from four sweet potato plants exhibited a wide range of phenotypic diversity and important functions. Growth in nitrogen free media, and the presence of *nifH* sequences verified in one of the isolate supports the hypothesis that the sweet potato endophytes may be of diazotrophic nature. Further studies are needed to determine if the endophytes might contribute to the N input in sweet potato plants that grow well in unfertile soil. Previous reports indicated that associative  $N_2$  fixation contributes to the N uptake in sweet potato plants (Yoneyama et al. 1998; Hill et al. 1990). Nitrogen fixing endophytes like *Azospirillum* sp.



**Fig. 4** Production of IAA by sweet potato endophytes. IAA reacts with  $FeCl_3$  and  $HClO_4$ , and the absorbance of the color produced was measured at 530 nm on a spectrophotometer. SPb produced the maximum IAA followed by SPE, SPI and SPJ. The experiment was performed in triplicate and the bars indicate standard deviations

**Fig. 5** Root formation by an IAA producing endophyte SPb in a hybrid poplar clone. When inoculated into INRA 717-1B4, four out of the five plants showed root formation and increased plant growth when compared to uninoculated controls



(Hill et al. 1983) and *Gluconacetobacter diazotrophicus* strains (Paula et al. 1991) were isolated from root and aerial part of sweet potato plants, respectively. Reiter et al. (2003) identified potential nitrogen fixing endophytes in seven sweet potato varieties collected in Uganda and Kenya. The *nifH* gene sequences had high homologies to the nitrogenase reductases of known nitrogen fixing bacteria. The authors suggested that the presence of these bacteria might contribute to the N input in sweet potato plants grown in different soils on small scale farms in Africa where no fertilizer is applied. In our study since Spa showed the presence of nitrogenase gene, we are currently doing experiments to investigate if it could help the sweet potato plant to grow in nitrogen limited conditions.

Some of the isolated endophytes of sweet potato synthesized the phytohormone IAA, which is involved in plant stem and root growth regulation. It is the most potent native auxin and is synthesized by plants from the amino acid tryptophan. The capacity

to synthesize IAA production is widespread among soil and plant associated bacteria (Verma et al. 2001). Microorganisms including rhizobia, mycorrhizal fungi and pseudomonads which inhabit the aerial or subterranean surfaces of plants have been shown to be capable of IAA synthesis. The microbial synthesis of plant growth regulators is an important factor in soil fertility (Kampert and Strzelczyk 1975). Our results support that IAA production by some sweet potato endophytes could influence the host growth in low fertile soils. It has also been shown that bacteria that promote plant growth in a given plant species may have no effect or even inhibit the growth of another one (Lazarovits and Nowak 1997). In our study the most IAA producing sweet potato endophyte showed a plant growth promoting effect when inoculated into another plant. Cuttings of INRA 717-1B4 do not root when exogenous auxin is provided, so perhaps the endophytes provide more than just the hormone improving the nutritional status of plants. Growth

**Table 2** Resistance of SPb (IAA producer) and SPh (IAA non-producer) isolates to various stress conditions and antibiotics

Endophytes selected	Cf	Tm	Km	Ap	Cm	Cb	Vm	4°C	UV exposure (CFU)	Heat shock	pH		NaCl (3M)	H <sub>2</sub> O <sub>2</sub> (3%)
											3	4		
SPb	-	-	-	+	+	+	+	+	$3 \times 10^2$	$3.5 \times 10^2$	+	+	+	+
SPh	-	-	-	-	-	-	-	-	$1.5 \times 10^2$	$3.6 \times 10^2$	+	+	+	+

(+) growth (-) no growth

Cf-cefatoxime, Tm-Timentin, Km-Kanamycin, Ap-Ampicillin, Cm-Chloramphenicol, Cb-carbenicillin Vm-Vancomycin.

promoting effects by endophytic bacteria can also be cultivar specific (Bensalim et al. 1998). Further tests are underway to check if the IAA producing sweet potato endophytes are nonspecific.

Studies have shown that IAA triggers an increased level of protection against external adverse conditions by coordinately enhancing different cellular defence systems (Bianco et al. 2006). These authors investigated the effect of IAA treatment on bacterial cells and demonstrated that the cells were tolerant to a variety of stress conditions. This is in contrast to our findings where we observed that the IAA producer (SPb) and the non-producer (SPh) were both resistant to low pH, heat, osmotic and oxidative treatments. However, SPb was tolerant to certain antibiotics, UV irradiation and cold stress. Since no correlation between IAA production and stress response was found, other IAA-producing endophytes were not further tested. We speculate that the endophytes might be expressing certain stress proteins which assist in refolding of denatured proteins to help protect themselves from adverse conditions. Protective effects of endophytes on the plants and their survival in adverse environmental conditions have also been shown (Mattos et al. 2001). Endophytes produce proteins and enzymes with important biological functions that help in plant development (Sahai and Manocha 1993). Pleban et al. (1997) isolated endophytic *B.cereus* from mustard that produced an enzyme stable between pH 4 and 8.5 and significantly protected cotton seedlings from root rot disease caused by *Rhizoctonia solani*. *Paenibacillus amylolyticus*, an endophytic isolate from coffee cherries possessed thermo stable properties and pH stability and its bioactivity was hardly influenced by EDTA and any metal ion (Reinhold-Hurk and Hurek 1998; Sakiyama et al. 2001). Other reports have indicated that bacterial endophytes provide nutrient and mineral input to the plants (Kim et al. 2002; Pacovsky 1988; Malinowski et al. 2000), reduce heavy metal contamination (Malinowski et al. 2004), ameliorate disease development (Benhamou et al. 1996) and help acclimatize plants to environment stresses (Lazarovits and Nowak 1997). Thus endophytes endow their host plants with many benefits and their commercial potential could reasonably receive more attention.

A diverse array of bacterial species have been reported to be endophytic including *Acetobacter*,

*Arthrobacter*, *Bacillus*, *Burkholderia*, *Enterobacter*, *Herbaspirillum* and *Pseudomonas* (Lodewyckz et al. 2002). The 16S rRNA of isolate SPb showed close relatedness to *Rahnella aquatilis*. Literature shows that *Rahnella aquatilis* is a plant associated bacterium and a nitrogen fixer. It was isolated from rhizosphere of wheat and maize and had the ability to reduce acetylene (indication of nitrogenase activity) in pure culture and in association with the host plant (Berge et al. 1991). *Rahnella* and *Pseudomonas* were identified as endophytes found inside seeds of Norway spruce where they were associated with plant growth promoting activity and biological control potential (Katarina et al. 2005).

The 16S rRNA gene sequence of SPe was closely related to that of *Pseudomonas* (100% identity). Beneficial *Pseudomonas* strains are frequently found associated with plants where they act as Plant Growth Promoting Bacteria (PGPB) by suppressing growth of pathogens or by producing plant growth hormones. Zaidi (2003) showed that when seeds of soybean were inoculated with a strain of *Pseudomonas* that produced IAA, the plants increased seed emergence. They also had increased shoot and root length, increased dry weight, increased numbers of nodules, and improved nutrient uptake. The bacteria were also resistant to several antibiotics.

There were several other isolates from sweet potato (SPh, SPi, SPj) that matched *Enterobacter* species. Enterobacteria, the most frequently occurring genera reported as endophytes are found in soil, water, fruits, vegetables, grains, flowering plants, and trees, and can be plant pathogens (Lodewyckz et al. 2002). Species of *E. cloacae* have been identified as endophytes of rice plants and had the ability to fix nitrogen (Ladha et al. 1983) and promote plant growth (Nie et al. 2002).

The sequence of 16S rRNA fragments of Spa and SPd had 100% identity with *Stenotrophomonas maltophilia*. Strains of this species have been isolated from RDX (Hexahydro-1,3,5-trinitro-1,3,5-triazine) and PAH (Polycyclic aromatic hydrocarbon) contaminated soils (Binks et al. 1995; Boonchan et al. 1998). Some of the strains have been found to be multidrug resistant (Garrison et al. 1996), and colonizers of plant rhizosphere (Berg et al. 2005). This genus was among several other bacteria isolated as an endophyte in coffee seeds (Vega et al. 2005). Lata et al. (2006) found endophytic bacteria belonging to *Pseudomonas*



and *Stenotrophomonas* associated with Echinacea plants.

Isolates SPf and SPk matched *Xanthomonas* sp. *Xanthomonas* is a genus of proteobacteria, many of which cause plant diseases. Some strains have always been found in association with plants. Tanprasert and Reed (1997) identified these as endophytes isolated from strawberry.

The sequence of the 16S rRNA fragment of SPg had 100% identity with *Rhodanobacter* species. Strains of this group have been isolated from soil (Weon et al. 2007) and were found to degrade carcinogens (Kanally et al. 2002) and have biocontrol activity (Clercq et al. 2006). The presence of an endophyte that resembles a strain that degrades carcinogens is an encouraging result since it has been shown that several endophytic strains present in different plants have the potential to degrade pollutants.

The 16S rRNA sequence of sweet potato endophyte, SPc, had 100% identity with *Phyllobacterium* sp. which is a plant growth promoting bacteria (Mantelin et al. 2006; Bertrand et al. 2001) able to fix nitrogen (Lambert and Joos 1989). It has been isolated from the rhizosphere of mangroves (Adriana et al. 2001) and sugar beet plants (Lambert et al. 1990). It has also been found to increase availability of nutrients in the rhizosphere positively influencing root growth and morphology and promoting other plant microbe symbioses (Vessey 2003).

Since sweet potato plants are hardy, fast growing, have an extensive root system, grow in poor soils and have a wide geographical distribution, they can be well suited for phytoremediation applications to clean up land contaminated with harmful pollutants. Also this starch rich root crop is a potential biofuel source and the tubers can be harvested after phytoremediation is complete to make liquid biofuels. This preliminary study yielded important uses of the endophytes to the sweet potato plants. We are currently investigating if any of these endophytes can aid in phytoremediation of carcinogenic compounds as well as help in plant development under different environmental stresses (temperature, osmosis, dessication).

**Acknowledgements** We thank undergraduate student helper Amanda Thornton for helping with the isolation of endophytes and the United States Department of Agriculture (USDA) for funding this project (grant no: 58-3148-5159)

## Appendix

**Table 3** ANOVA analysis

Source	Partial SS	df	MS	F	Prob > F
Model	11.7247352	19	.617091327	75.98	0.0000
Sample	8.51532782	3	2.83844261	122.51	0.0000
Flask Sample	.185357703	8	.023169713		
Time	2.3544058	2	1.1772029	144.94	0.0000
Time*Sample	.669643897	6	.111607316	13.74	0.0000
Residual	.129953838	16	.008122115		
Total	11.8546891	35	.338705402		

## References

- Adriana R, Holguin G, Glick BR et al (2001) Synergism between *Phyllobacterium* sp. (N<sub>2</sub>-fixer) and *Bacillus licheniformis* (P-solubilizer), both from a semiarid mangrove rhizosphere. *FEMS Microbiol Ecol* 35(2):181–187. doi:10.1111/j.1574-6941.2001.tb00802.x
- Altschul SF, Madden TL, Schaffer AA et al (1997) Gapped BLAST and PSI-BLAST: a new generation of protein database search programs. *Nucleic Acids Res* 25:3389–3402. doi:10.1093/nar/25.17.3389
- Ausubel F, Brent R, Kingston RE et al (1995) Short protocols in molecular biology. E d. John Wiley & Sons, Inc, New York
- Bangera MG, Thomashow LS (1996) Characterization of a genomic locus required for synthesis of the antibiotic 2,4-diacetylphloroglucinol by the biological control agent *Pseudomonas fluorescens* Q2–87. *Mol Plant Microbe Interact* 9:83–90
- Barraquio WL, Revilla L, Ladha JK (1997) Isolation of endophytic diazotrophic bacteria from wetland rice. *Plant Soil* 194:15–24. doi:10.1023/A:1004246904803
- Benhamou N, Klopper JW, Quadt-Hallman A et al (1996) Induction of defence related ultrastructural modifications in pea root tissues inoculated with endophytic bacteria. *Plant Physiol* 112:919–929
- Bensalim S, Nowak J, Asiedu S (1998) A plant growth promoting rhizobacterium and temperature effects on performance of 18 clones of potato. *Am J Potato Res* 75:145–152
- Berg G, Eberl L, Hartmann A (2005) The rhizosphere as a reservoir for opportunistic human pathogenic bacteria. *Environ Microbiol* 7:1673–1685. doi:10.1111/j.1462-2920.2005.00891.x
- Berge O, Heulin T, Achouak W et al (1991) *Rahnella aquatilis*, a nitrogen fixing enteric bacterium associated with the rhizosphere of wheat and maize. *Can J Microbiol* 37:195–203
- Bertrand H, Nalin R, Bally R et al (2001) Isolation and identification of the most efficient plant growth promoting bacteria associated with canola (*Brassica napus*). *Biol Fertil Soils* 33:152–156. doi:10.1007/s003740000305

- Bianco C, Imperlini E, Calogero R et al (2006) Indole 3-acetic acid improves *Escherichia coli*'s defences to stress. Arch Microbiol 185:373–382. doi:10.1007/s00203-006-0103-y
- Binks PR, Nicklin S, Bruce N (1995) Degradation of Hexahydro-1,3,5-Trinitro-1,3,5-Triazine (RDX) by *Stenotrophomonas maltophilia* PB1. Appl Environ Microbiol 61:1318–1322
- Boonchan S, Britz ML, Stanley GA (1998) Surfactant enhanced biodegradation of high molecular weight PAHs by *Stenotrophomonas maltophilia*. Biotechnol Bioeng 59:482–494. doi:10.1002/(SICI)1097-0290(19980820)59:4<482::AID-BIT11>3.0.CO;2-C
- Burgmann H, Widmer F, Sigler WV et al (2004) New molecular screening tools for the analysis of free living diazotrophs in soil. Appl Environ Microbiol 70:240–247. doi:10.1128/AEM.70.1.240-247.2004
- Camerini S, Senatore B, Lonardo E et al (2008) Introduction of a novel pathway for IAA biosynthesis to rhizobia alters vetch root nodule development. Arch Microbiol 190:67–77. doi:10.1007/s00203-008-0365-7
- Chilton MD, Currier T, Farrand S et al (1974) *Agrobacterium tumefaciens* DNA and PS8 bacteriophage DNA not detected in crown gall tumors. Proc Natl Acad Sci USA 71:3672–3676. doi:10.1073/pnas.71.9.3672
- Clercq D, Trappen SV, Cleenwerck I et al (2006) *Rhodanobacter spathiphylli* sp.nov., a gammaproteobacterium isolated from the roots of *Spathiphyllum* plants grown in a compost amended potting mix. Int J Syst Evol Microbiol 56:1755–1759. doi:10.1099/ijs.0.64131-0
- Creus CM, Sueldo RJ, Barassi C (1998) Water relations in *Azospirillum* inoculated wheat seedlings under osmotic stress. Can J Bot 76:238–244. doi:10.1139/cjb-76-2-238
- deAraujo BS, de Oliveira JO, Machado SS et al (2004) Comparative studies of the peroxidases from hairy roots of *Daucus carota*, *Ipomoea batatas* and *Solanum aviculare*. Plant Sci 167:1151–1157
- de Melo MP, Pithon-Curi TC, Curi R (2004) Indole-3-acetic acid increases glutamine utilization by high peroxidase activity-presenting leucocytes. Life Sci 75:1713–1725
- Doty SL, Doshier MR, Singleton GL et al (2005) Identification of an endophytic rhizobium in stems of *Populus*. Symbiosis 39:27–35
- Doty SL, James CA, Moore AL et al (2007) Enhanced phytoremediation of volatile environmental pollutants with transgenic trees. Proc Natl Acad Sci 104:16816–16821
- Doty SL (2008) Tansley review: enhancing phytoremediation through the use of transgenics and endophytes. New Phytol 179:318–333. doi:10.1111/j.1469-8137.2008.02446.x
- Frommel MI, Nowak J, Lazarovits G (1991) Growth enhancement and developmental modifications of in vitro grown potato (*Solanum tuberosum* sp. *tuberosum*) as affected by a nonfluorescent *Pseudomonas* sp. Plant Physiol 96:928–936
- Garrison MW, Anderson DE, Campbell DM et al (1996) *Stenotrophomonas maltophilia*: emergence of multidrug resistant strains during therapy in an in vitro pharmacodynamic chamber model. Antimicrobial agents and Chemotherapy 40:2859–2864
- Glick BR, Penrose DM, Li J (1998) A model for the lowering of plant ethylene concentrations by plant growth promoting bacteria. J Theor Biol 190:63–68
- Gordon SA, Weber RP (1951) Colorimetric estimation of indole acetic acid. Plant Physiol 26:192–195
- Hallmann J, Quadt-Hallmann A, Mahaffee WF et al (1997) Endophytic bacteria in agricultural crops. Can J Microbiol 43:895–914
- Hill WA, Bacon Hill P, Crossman SM et al (1983) Characterisation of N<sub>2</sub>-fixing bacteria associated with sweet potato roots. Can J Microbiol 29:860–862
- Hill WA, Dodo H, Hahn SK et al (1990) Sweet potato root and biomass production with and without fertilization. Agron J 82:1120–1122
- Hoagland DR, Arnon DI (1950) The water culture method for growing plants without soil. Circular 347, Calif Agric Expt Stn, University of California, Berkeley, CA
- Jacobson CB, Pasternak JJ, Glick BR (1994) Partial purification and characterization of 1-amino-cyclopropane-1-carboxylate deaminase from the plant growth promoting rhizobacterium *Pseudomonas putida* GR 12–2. Can J Microbiol 40:1019–1025
- Kampert M, Strzelczyk E (1975) Synthesis of auxins by fungi isolated from the roots of pine seedlings (*Pinus silvestries* L.) and from soil. Acta Microbiol Paleon Ser B 7:223–230
- Kanally RA, Harayama S, Watanabe K (2002) *Rhodanobacter* sp. strain BPC1 in a Benzo(a)pyrene mineralizing bacterial consortium. Appl Environ Microbiol 68:5826–5833
- Katarina C, Hojka K, Ravnikar M et al (2005) Bacterial endophytes from seeds of Norway spruce (*Picea abies* L. Karst). FEMS Microbiol Letters 244:341–345
- Kim KY, Cho YS, Sohn BK et al (2002) Cold storage of mixed inoculum of *Glomus intraradii* enhances root colonization, phosphorous status and growth of hot pepper. Plant Soil 238:267–272
- Ladha JK, Barraquio WL, Watanabe I (1983) Isolation and identification of nitrogen fixing *Enterobacter cloacae* and *Klebsiella planticola* associated with rice plants. Can J Microbiol 29:1301–1308
- Lambert B, Joos H (1989) Fundamental aspects of rhizobacterial plant growth promotion research. Trends Biotechnol 7:215–219
- Lambert B, Joos H, Dierickx S et al (1990) Identification and plant interaction of a *Phyllobacterium* sp., a predominant rhizobacterium of young sugar beet plants. Appl Environ Microbiol 56:1093–1102
- Lata H, Li XC, Silva B et al (2006) Identification of IAA producing endophytic bacteria from micropropagated echinacea plants using 16S rRNA sequencing. Plant Cell Tissue Organ Cult 85:353–359
- Lazarovits G, Nowak J (1997) Rhizobacteria for improvement of plant growth and establishment. HortScience 32:188–192
- Lodewyckz C, Vangronsveld J, Porteous F et al (2002) Endophytic bacteria and their potential applications. Crit Rev Plant Sci 21:583–606
- Madhaiyan M, Poonguzhali S, Senthilkumar M et al (2004) Growth promotion and induction of systemic resistance in rice cultivar Co-47 (*Oryza sativa* L.) by *Methylobacterium* sp. Bot Bull Acad Sin 45:315–324
- Malinowski DP, Alloush GA, Belesky DP (2000) Leaf endophyte *Neotyphodium coenophialum* modifies mineral uptake in tall fescue. Plant Soil 227:115–126

- Malinowski DP, Zuo H, Belesky DP et al (2004) Evidence of copper binding by extracellular root exudates of tall fescue but not perennial ryegrass infected with *Neotyphodium* sp. endophytes. *Plant Soil* 267:1–12
- Mantelin S, Desbrosses G, Larcher M et al (2006) Nitrate-dependent control of root architecture and N nutrition are altered by a plant growth-promoting *Phyllobacterium* sp. *Planta* 223:591–603
- Mattos KA, Jones C, Heise N et al (2001) Structure of an acidic exopolysaccharide produced by the diazotrophic endophytic bacterium *Burkholderia brasiliensis*. *Eur J Biochem* 268:3174–3179
- Murashige T, Skoog F (1962) A revised medium for rapid growth and bioassays with tobacco tissue culture. *Plant Physiol* 15:473–497
- Nie L, Shah S, Rashid A et al (2002) Phytoremediation of arsenate contaminated soil by transgenic canola and the plant growth promoting bacterium *Enterobacter cloacae* CAL2. *Plant Physiol Biochem* 40:355–361
- Nowak J, Asiedu SK, Lazarovits G (1995) Enhancement of in vitro growth and transplant stress tolerance of potato and vegetable plantlets co-cultured with a plant growth promoting pseudomonad bacterium. In: Carre F, Chagvardieff P (eds) Proc. International Symposium on Ecophysiology and Photosynthetic in Vitro Cultures, Aix-en-Provence, France CEA, Cadarache, France, pp173–180
- O Sullivan DJ, O, Gara F (1992) Traits of fluorescent *Pseudomonas* sp. involved in suppression of plant root pathogens. *Microbial Rev* 56:662–676
- Pacovsky RS (1988) Influence of inoculation with *Azospirillum brasilense* and *Glomus fasciculatum* on sorghum nutrition. *Plant Soil* 110:283–287
- Paula MA, Reis UM, Dobereiner J (1991) Interactions of *Golum clarum* with *Acetobacter diazotrophicus* in infection of sweet potato, sugarcane and sweet sorghum. *Biol Fertil Soils* 11:111–115
- Pleban S, Chernin L, Chet I (1997) Chitinolytic activity of an endophytic strain of *Bacillus cereus*. *Lett Appl Microbiol* 25:284–288
- Redman RS, Sheehan KB, Stout RG et al (2002) Thermotolerance generated by plant/fungal symbiosis. *Science* 298:1581
- Reinhold-Hurk B, Hurek T (1998) Life in grasses: diazotrophic endophytes. *Trends Microbiol* 6:139–144
- Reiter B, Burgmann H, Burg K et al (2003) Endophytic gene diversity in African sweet potato. *Can J Microbiol* 49:549–555
- Sahai AS, Manocha MS (1993) Chitinases of fungi and plants: their involvement in morphogenesis and host-parasite interaction. *FEMS Microbiol Rev* 11:317–338
- Saitou N, Nei M (1987) The neighbor-joining method: a new method for reconstructing phylogenetic trees. *Mol Biol Evol* 4:406–425
- Sakiyama CCH, Paula EM, Pereira PC et al (2001) Characterization of pectin lyase produced by an endophytic strain isolated from coffee cherries. *Lett Appl Microbiol* 33:117–121
- Strobel G, Daisy B, Castillo U et al (2004) Natural products from endophytic microorganisms. *J Nat Prod* 67:257–268
- Tamura K, Dudley J, Nei M et al (2007) MEGA4: Molecular Evolutionary Genetics Analysis (MEGA) software version 4.0. *Mol Biol Evol* 24:1596–1599
- Tanprasert P, Reed BM (1997) Detection and identification of bacterial contaminants from strawberry runner explants. *In Vitro Cell Dev Biol* 33:221–226
- Thompson JD, Higgins DG, Gibson TJ (1994) CLUSTAL W: improving the sensitivity of progressive multiple sequence alignment through sequence weighting, position-specific gap penalties and weight matrix choice. *Nucleic Acids Res* 22:4673–4680
- Ulrich K, Ulrich A, Ewald D (2008) Diversity of endophytic bacterial communities in poplar grown under field conditions. *FEMS Microbiol Ecol* 63:169–180
- Vega FE, Ripoll MP, Posada F et al (2005) Endophytic bacteria in *Coffea arabica* L. *J Basic Microbiol* 45:371–380
- Verma SC, Ladha JK, Tripathi AK (2001) Evaluation of plant growth promoting and colonization ability of endophytic diazotrophs from deep water rice. *J Biotech* 91:127–141
- Vessey JK (2003) Plant growth promoting rhizobacteria as biofertilizers. *Plant Soil* 255:571–586
- Weon HY, Kim BY, Hong SB et al (2007) *Rhodanobacter ginsengisoli* sp. nov and *Rhodanobacter terrae* sp. nov. isolated from soil cultivated with Korean ginseng. *Int J Syst Evol Microbiol* 57:2810–2813
- Yoneyama T, Terakado J, Masuda T (1998) Natural abundance of  $^{15}\text{N}$  in sweet potato, pumpkin, sorghum and castor bean: possible input of  $\text{N}_2$  derived nitrogen in sweet potato. *Biol Fertil Soils* 26:152–154
- Zaidi SFA (2003) Biocontrol of *Fusarium oxysporium* by plant growth promoting rhizobacteria in soybean. *Ann Agr Res* 24:676–678