

# Fire Station #6

---



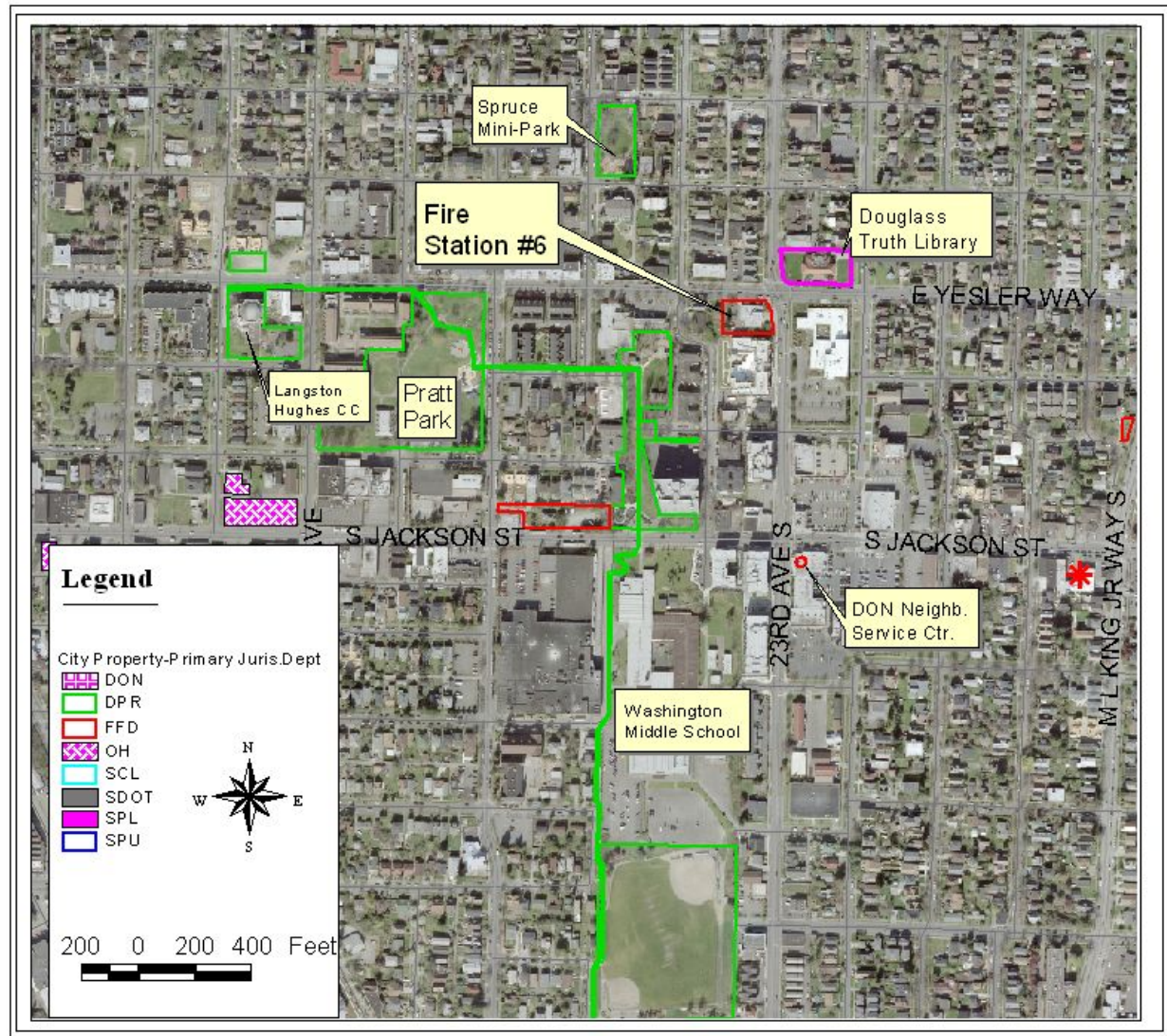
## **Schedule**

Anticipated Start Date: 2009

Anticipated Completion: 2012

- Built in 1932
- Art Deco architecture
- Landmark Status designated in 2005
- Bldg. Size: 8,130 s.f.
- Lot Size: 20,400 s.f.
- Zoned: L-4 Lowrise
- Address: 101 23<sup>rd</sup> Ave So.

# Fire Station #6 Location



# Fire Station #37

---



## **Schedule**

Anticipated Start Date: 2007  
Anticipated Completion: 2010

- Built in 1925
- Mission Revival architecture
- Landmark Status designated in 2005
- Bldg. Size: 4,148 s.f.
- Lot Size: 9,465 s.f.
- Zoned SF-5000
- Address: 7300 35th Ave SW



# Fire Station #37 Location



# Fire Station #38

---



- Built in 1930
- Mission Revival architecture
- Landmark Status designated in 2005
- Bldg. Size: 2,568 s.f.
- Lot Size: 8,960s.f.
- Zoned L-1 Lowrise
- Address: 5503 33<sup>rd</sup> Ave NE

## **Schedule**

Anticipated Start Date: 2007  
Anticipated Completion: 2010



# Fire Station #38 Location

