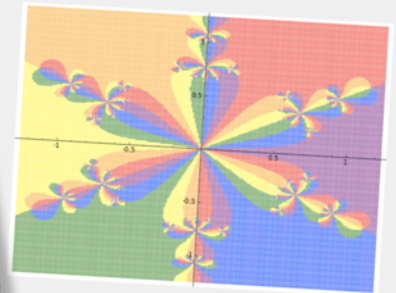
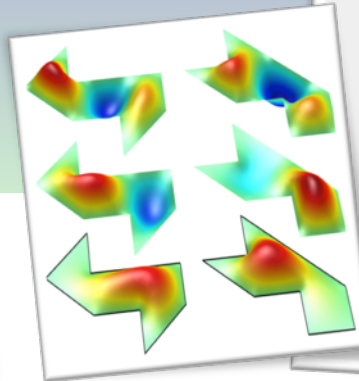
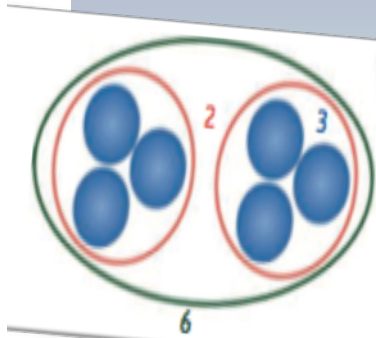


Math (Enthusiast) Series

Joy 110 @ 3:15 unless otherwise indicated

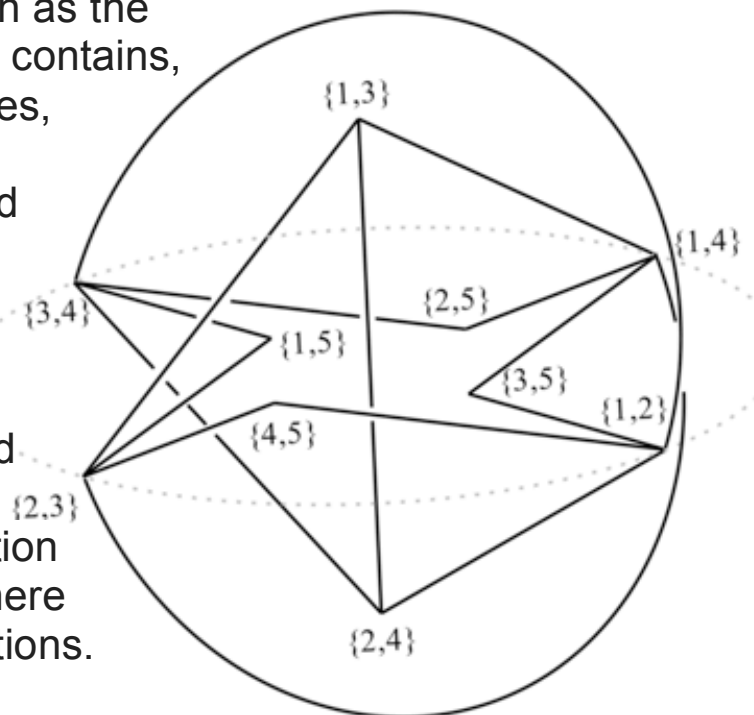


Everyone interested in mathematics is welcome to attend TMath 450's presentations most Tuesdays of Winter quarter (and some Thursdays!)

1/10/17 Tuesday | Dr. Courtney Thatcher (UPS, topologist)

Using Topological Invariants to Distinguish Objects

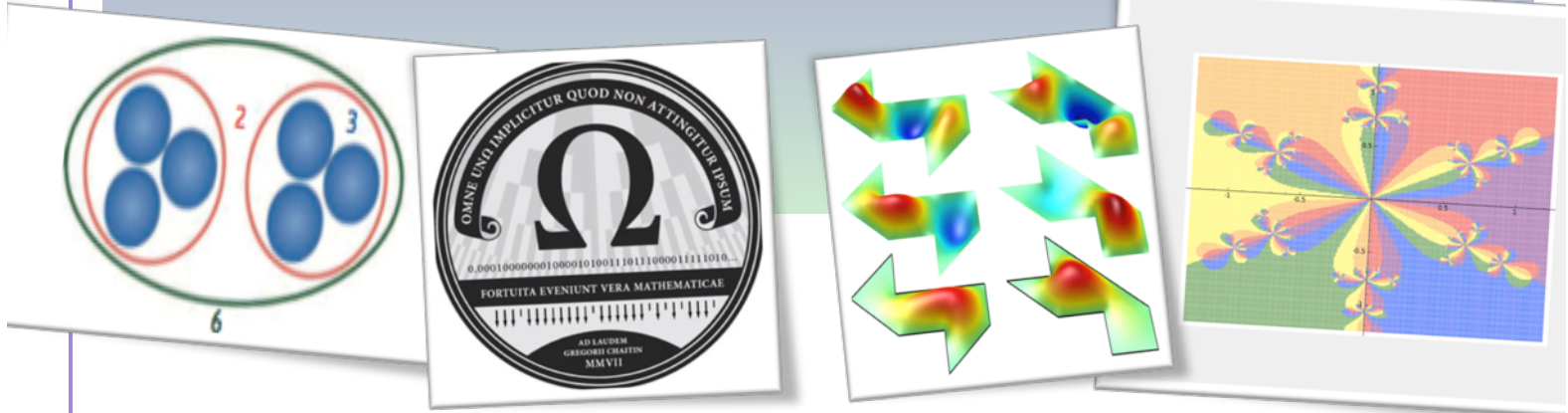
A common question asked in topology is whether or not two objects are the same. One way to try to answer this is by looking at the intrinsic properties of the objects such as the number of pieces, how many holes it contains, and how it is knotted. These properties, known as topological invariants, are shared by spaces that are considered the same, but may not be able to distinguish between spaces that are different. In this talk, we will take a closer look at a particular invariant known as the Euler characteristic and how it is used to distinguish 2-dimensional objects (the classification of surfaces). We will then discuss where one might go next and some applications.



Petersen embedding with Z_4 symmetries

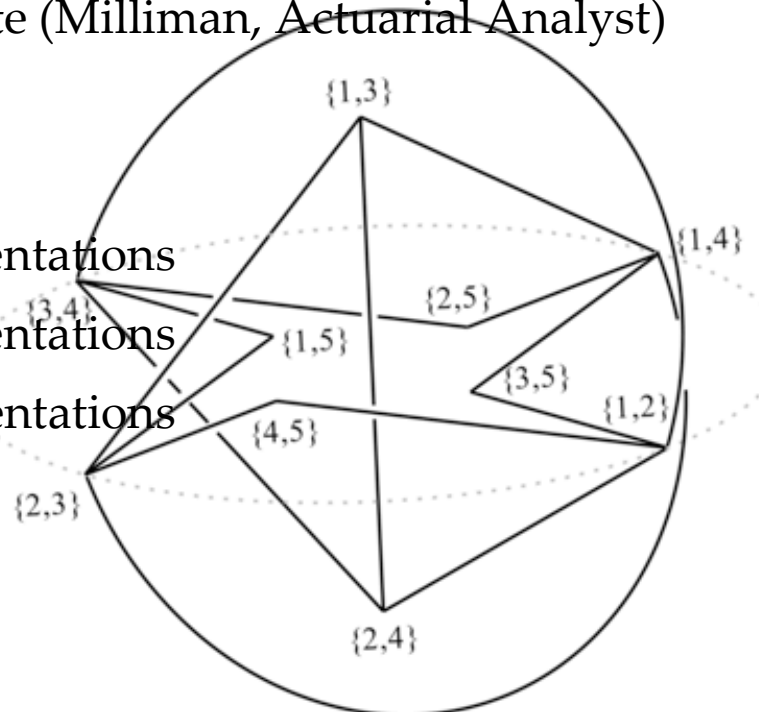
Math (Enthusiast) Series

Joy 110 @ 3:15 unless otherwise indicated



Everyone interested in mathematics is welcome to attend TMath 450's presentations most Tuesdays of Winter quarter (and some Thursdays!)

1/10/17 Tuesday	Dr. Courtney Thatcher (UPS, topologist)
1/17/17 Tuesday	Dr. Yajun An (PLU, applied mathematician)
1/24/17 Tuesday	Kari Treese (teacher & UWT alum)
2/9/17 Thursday	Dr. Rob Fisette (Milliman, Actuarial Analyst)
2/21/17 @4:05pm	Career Panel
2/28/17 Tuesday	Speaker TBD
3/7/17 Tuesday	Student Presentations
3/9/17 Thursday	Student Presentations
3/16/17 Thursday	Student Presentations



Petersen embedding with Z_4 symmetries