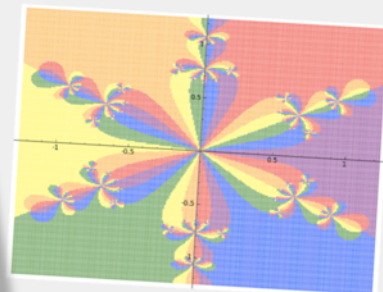
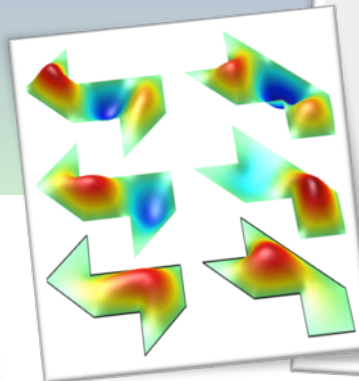
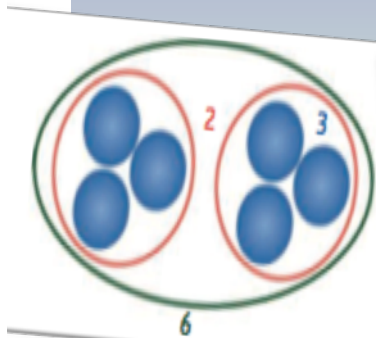


Math (Enthusiast) Series

Joy 110 @ 3:15 unless otherwise indicated



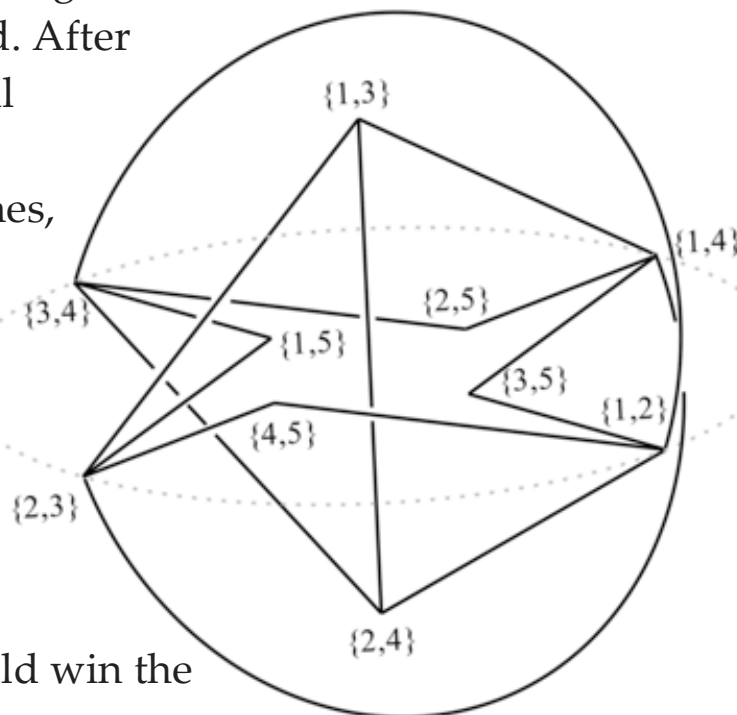
Everyone interested in mathematics is welcome to attend TMath 450's presentations most Tuesdays of Winter quarter (and some Thursdays!)

2/28/17

Scott Davis (Tacoma Community College)

Tic-Tac-Toe on Finite Planes

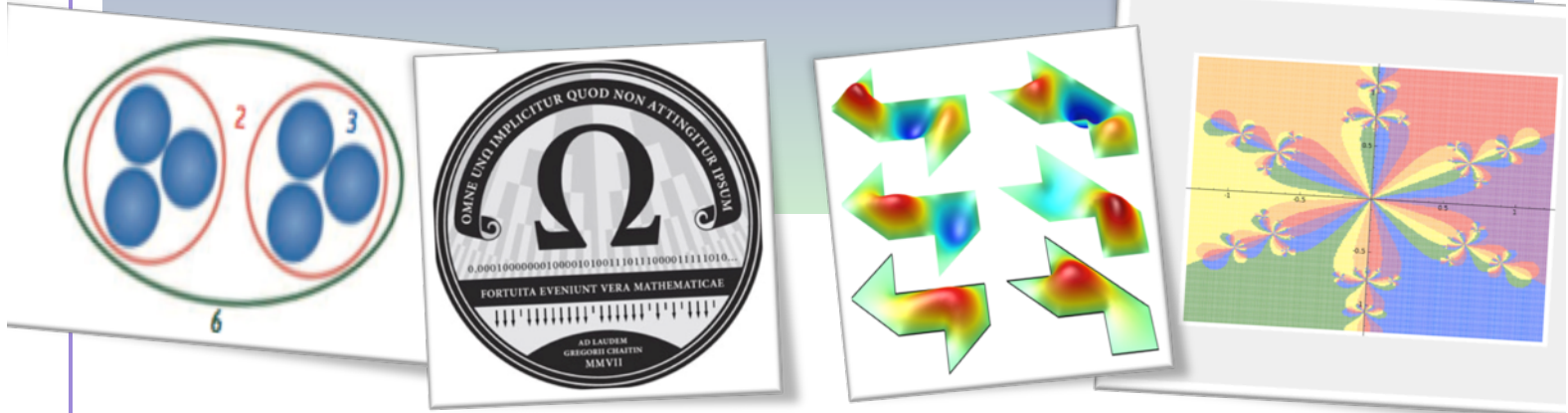
We will consider playing the children's game, Tic-Tac-Toe, on boards other than the typical 3×3 grid. After discussing the basics of combinatorial game theory, we will introduce the concepts of affine and projective planes, which will be our new boards for Tic-Tac-Toe. We will explore the possible outcomes when we play on these new boards, and find explicit strategies for the first player to win. We will then consider larger boards, and using a weight function, again determine when the first player should win the game.



Petersen embedding with Z_4 symmetries

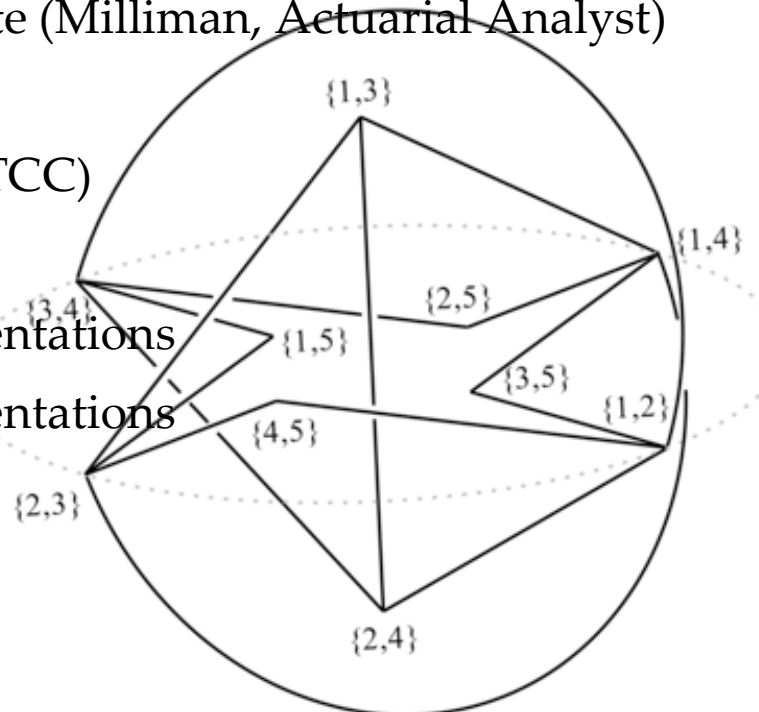
Math (Enthusiast) Series

Joy 110 @ 3:15 unless otherwise indicated



Everyone interested in mathematics is welcome to attend TMath 450's presentations most Tuesdays of Winter quarter (and some Thursdays!)

| | |
|-------------------------|---|
| 1/10/17 Tuesday | Dr. Courtney Thatcher (UPS, topologist) |
| 1/17/17 Tuesday | Dr. Yajun An (PLU, applied mathematician) |
| 1/24/17 Tuesday | Kari Treese (teacher & UWT alum) |
| 2/9/17 Thursday | Dr. Rob Fisette (Milliman, Actuarial Analyst) |
| 2/21/17 @4:05pm | Career Panel |
| 2/28/17 Tuesday | Scott Davis (TCC) |
| 3/2/17 Tuesday | TBA |
| 3/9/17 Thursday | Student Presentations |
| 3/16/17 Thursday | Student Presentations |



Petersen embedding with Z_4 symmetries