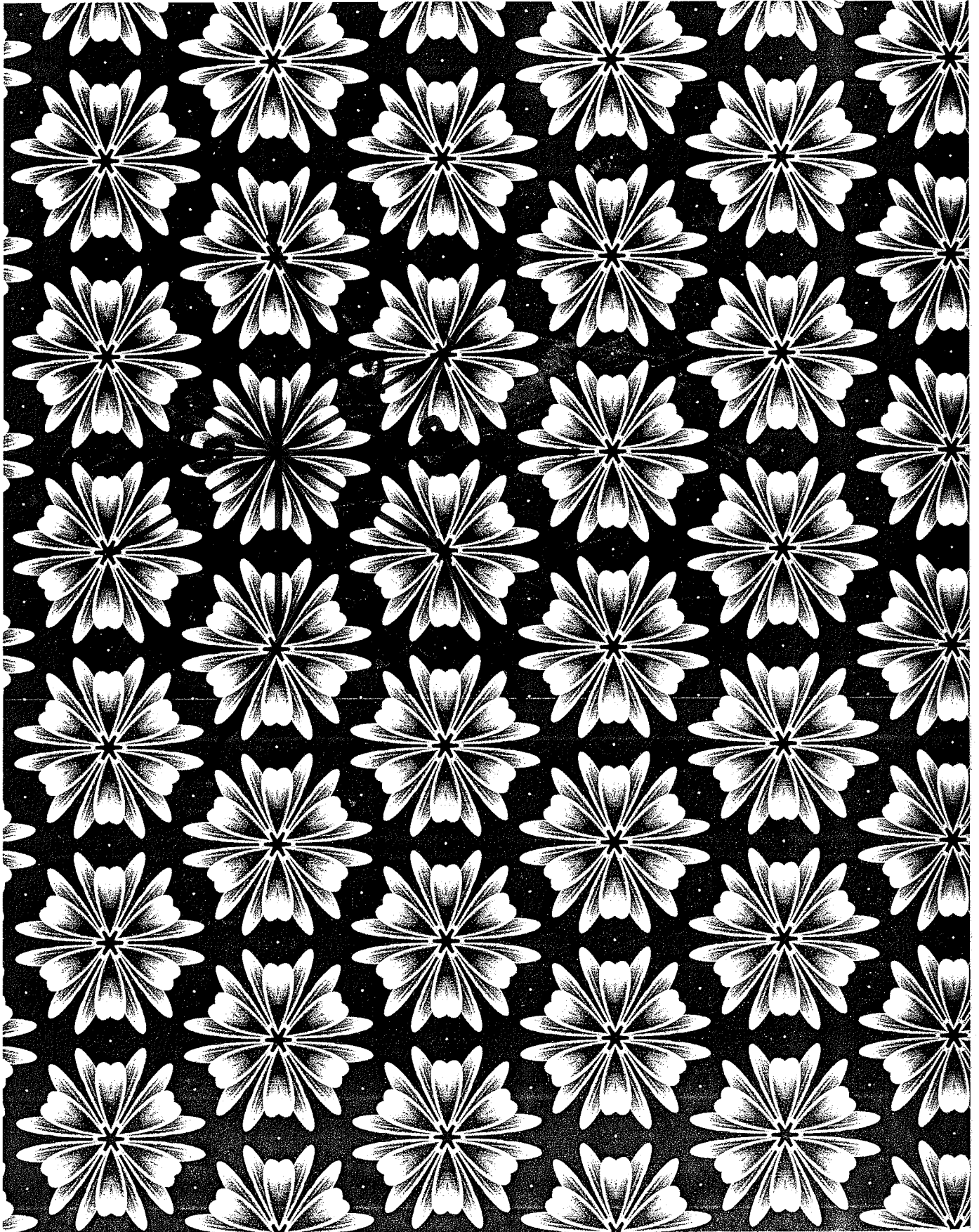


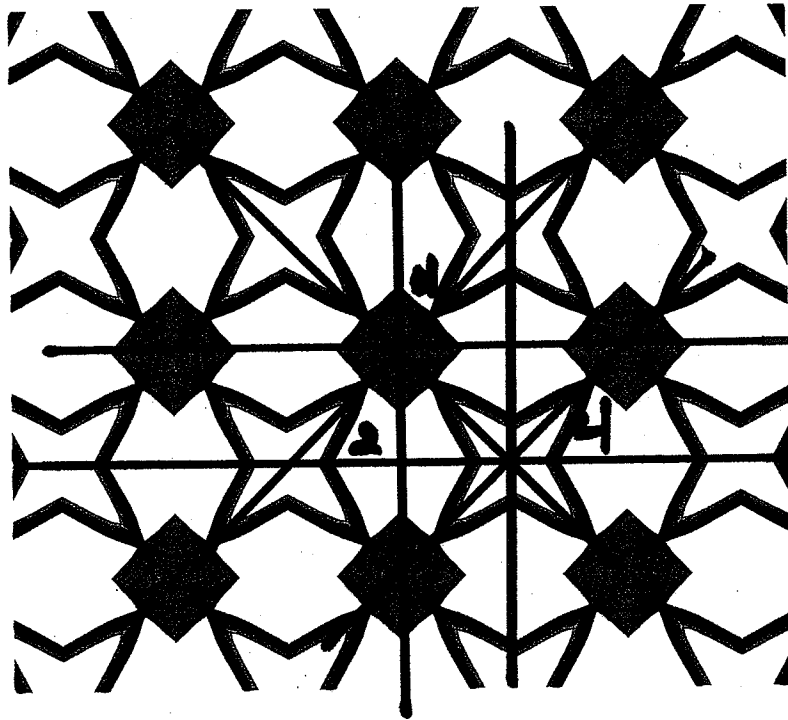
Taken from
The Symmetries of Things

by John Conway, Heidi Burgiel, & Chaim Goodman-Skewes

632

Figure A





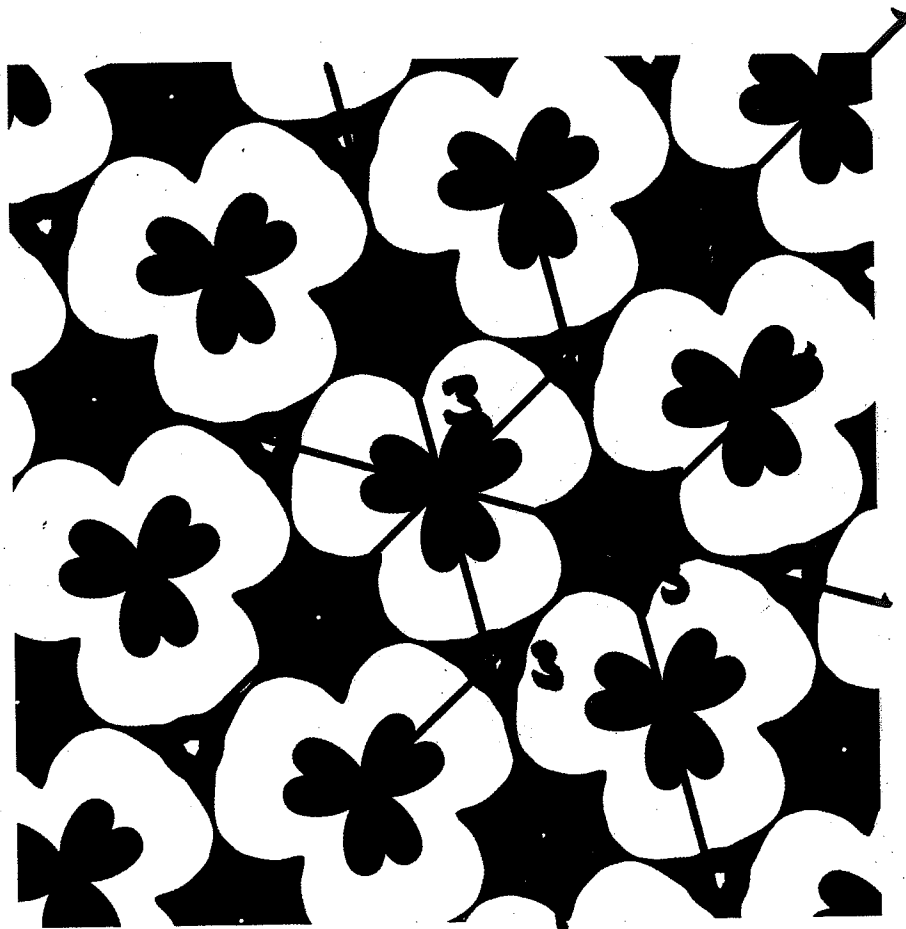
Symbol	Cost
1	1
2	$\frac{1}{4}$
3	$\frac{2}{6}$
4	$\frac{3}{8}$
5	$\frac{4}{10}$
6	$\frac{5}{12}$
...	
N	$\frac{N-1}{2N}$

Figure 2.4. Decorated square tiling.

$$\forall 4/4/2$$

Cost:

$$1 + \frac{2}{6} + \frac{2}{8} + \frac{1}{4} = 2$$



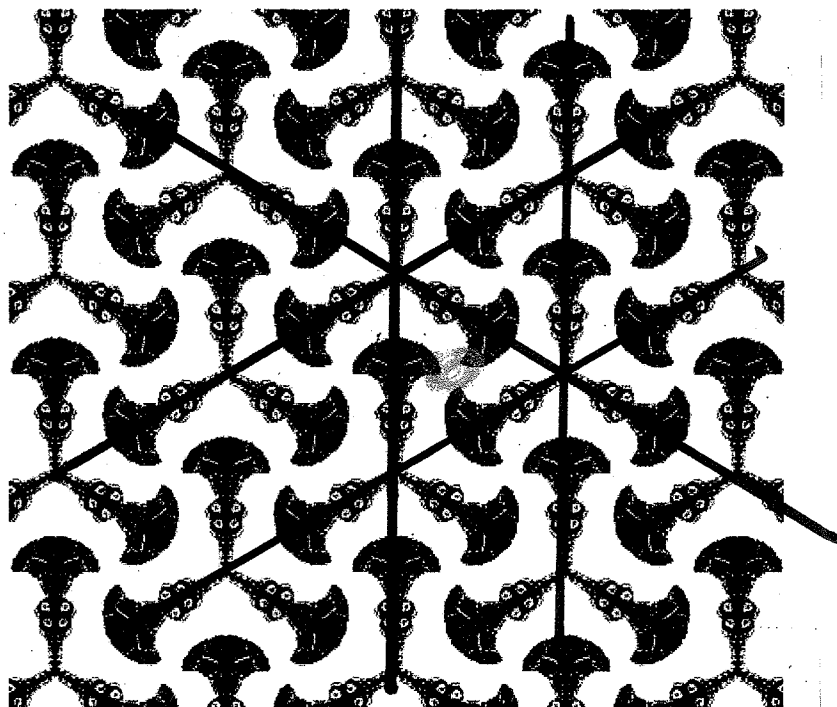
$$\forall 333$$

Cost:

$$1 + \frac{1}{3} + \frac{1}{3} + \frac{1}{3} = 2$$

Figure B

Blue Symbol (before *)	Cost
2	$\frac{1}{2}$
3	$\frac{2}{3}$
4	$\frac{3}{4}$
5	$\frac{4}{5}$
6	$\frac{5}{6}$
...	...
N	$\frac{N-1}{N}$



3*3
 Cost:
 $\frac{1}{3} + 1 + \frac{2}{3}$
 $= 2$

Figure 2.5.

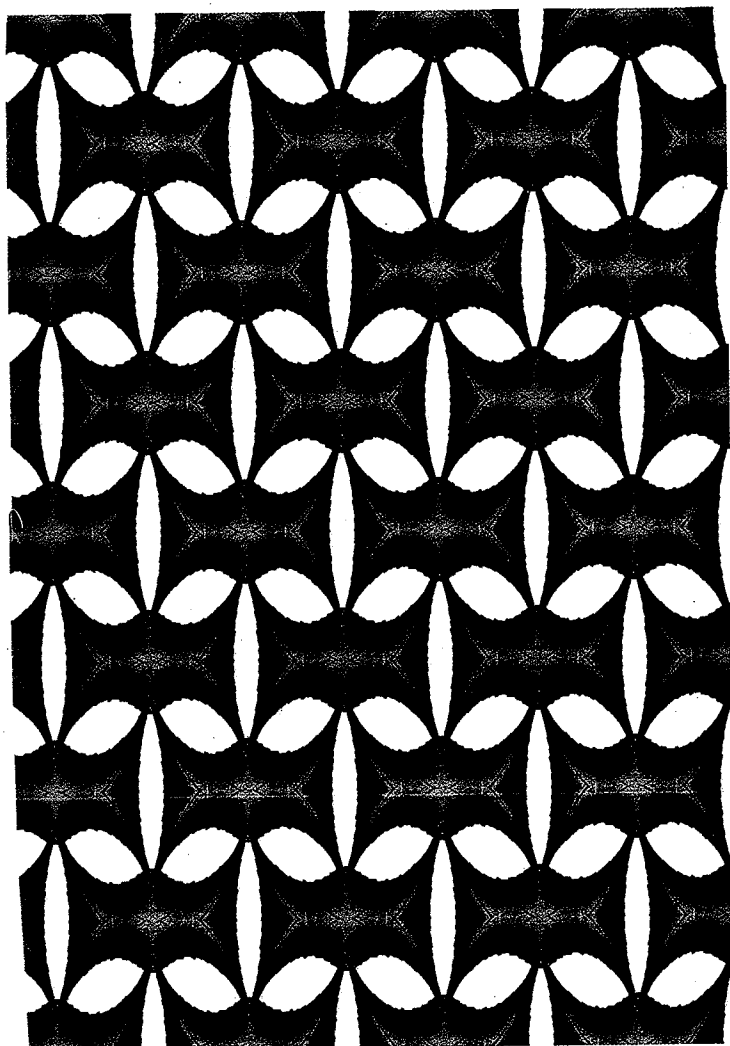


Figure 2.6.

2*22

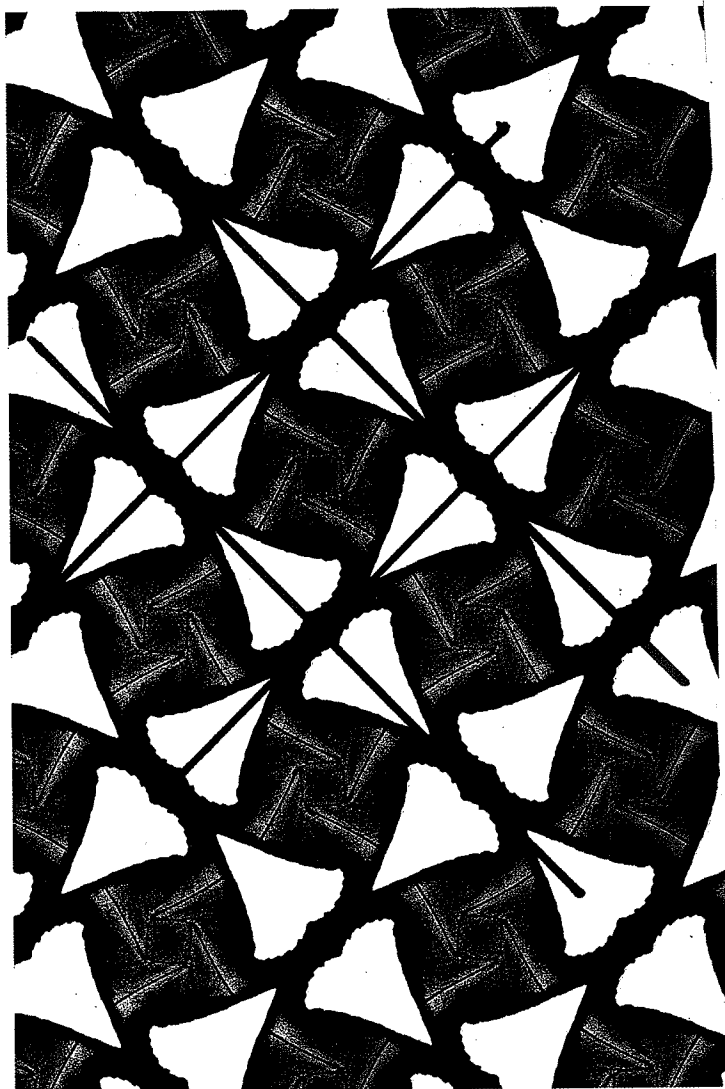


Figure 2.7. Pa

4*2

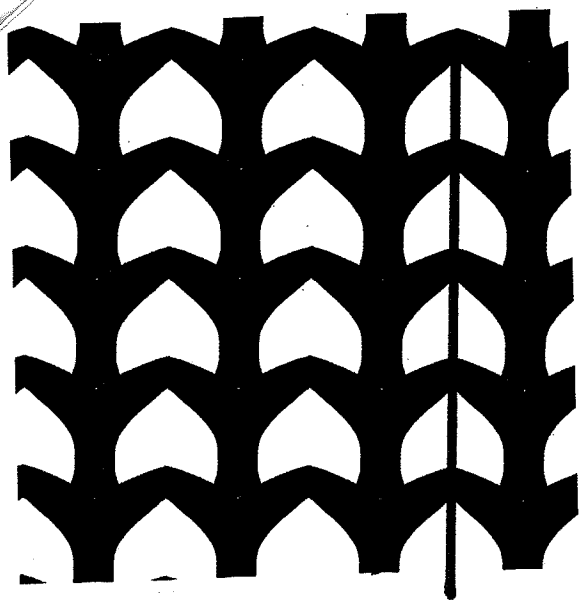


Figure 1 * *

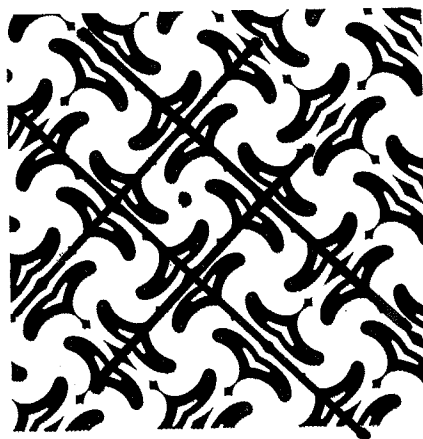


Figure 2 4 * 2

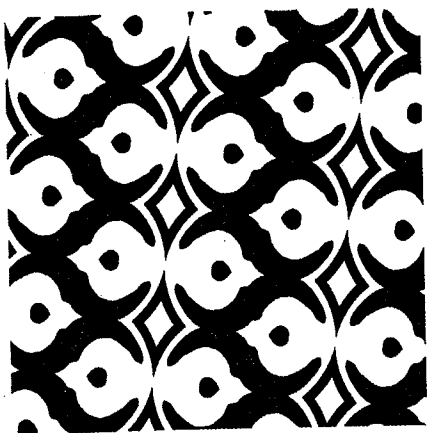


Figure 3 2 * 2 2

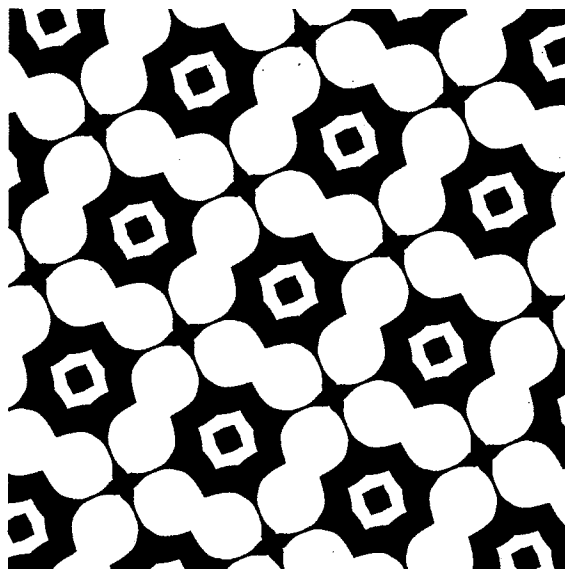
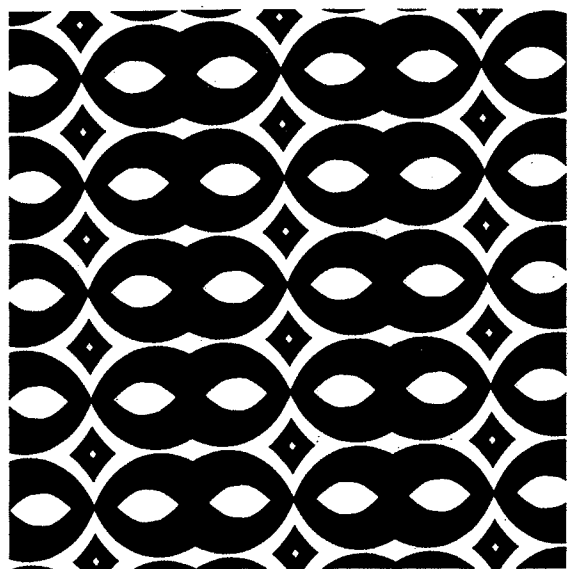


Figure 4

* 2 * 4



* 2 * 2 2

Figure 5

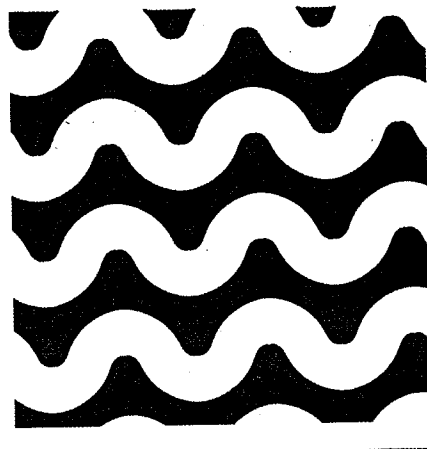


Figure 6 2 2 *