

Quiz 4

Show *all* your work. Reasonable supporting work must be shown to earn credit. There are *two* sides to this quiz.

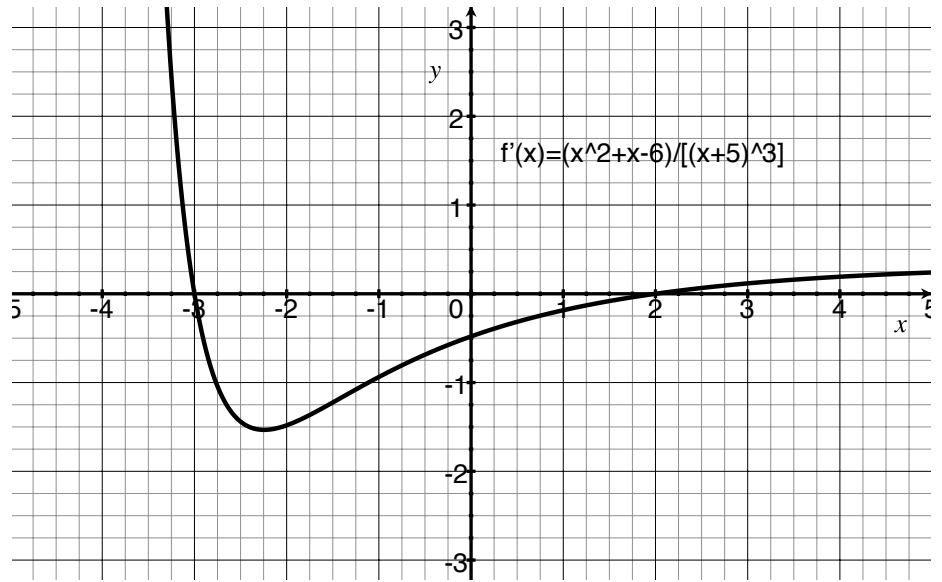
1. [3] (WebHW11 #1) Write the form of the partial fractions of the rational expression.
Do not solve for the constants.

$$\frac{3x - 1}{x^2 + 8x + 16}$$

2. [3] (PartialFractionsActivity #5) Find $\int \frac{3}{5t^2 + 1} dt$

3. (§8.5 #42) Use the graph of $f'(x)$ graphed below to answer the following:

(a) [1] Approximate an x which is a minimum for $f'(x)$.



(b) [1] Approximate an x which is a minimum for $f(x)$.

(c) [2] Which is greater, $f(0)$ or $f(1)$? Explain your answer.