

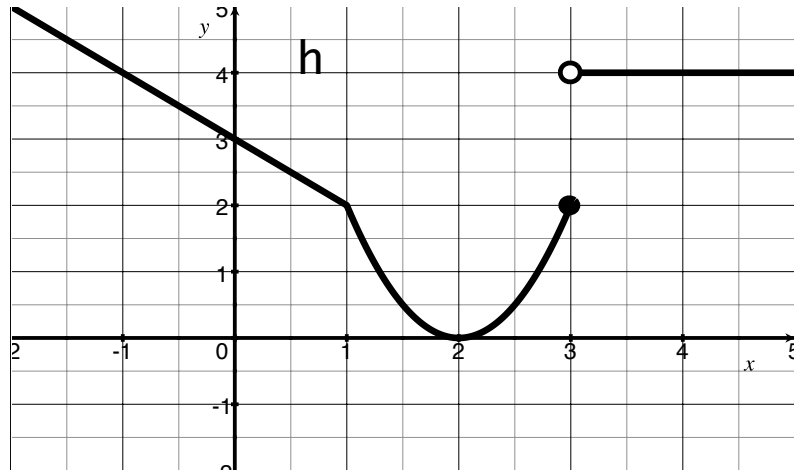
TMATH 124: Quiz 1

Reasonable supporting work must be shown to earn credit.

1. [4] Use the graph of h below to find the limits (either numerically, graphically, or algebraically), if they exist:

$$\lim_{x \rightarrow 3^+} h(x)$$

$$\lim_{x \rightarrow 3} h(x)$$

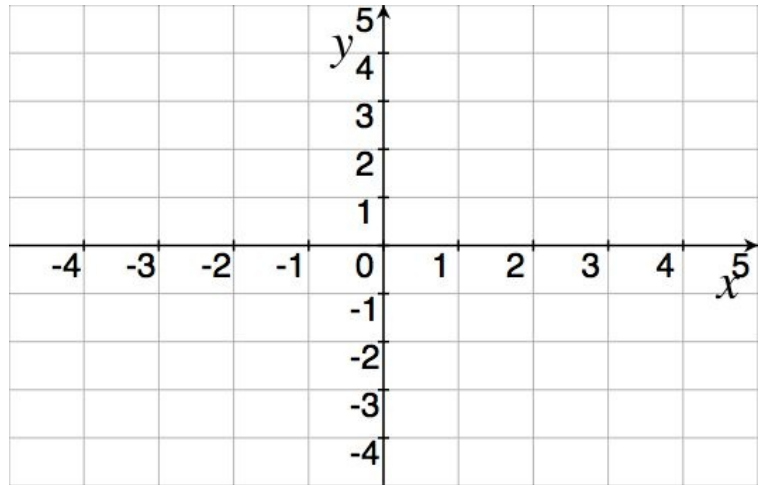


2. [4] Sketch the graph of a function α that satisfies *all* of the following.

(a) $\lim_{x \rightarrow -1} \alpha(x) = 3$

(b) $\lim_{x \rightarrow 2^-} \alpha(x) = -3$

(c) $\alpha(2) = 0$



3. [2] Find the limit (either numerically, graphically, or algebraically), if it exists: $\lim_{t \rightarrow 0} \frac{2 \sin(t)}{t}$