

Quiz 1

Show *all* your work. No credit is given without reasonable supporting work. There are *two* sides to this quiz.

1. [3] (WebHW1 #6) Let $f(x) = \frac{x}{\sqrt{9-x^2}}$. Find $f\left(\frac{4}{3}\right)$ and simplify.

2. (Quiz1 Winter 2016) Define G that takes numbers to the letter that it starts with when written in english. For example, $G(2) = t$ since two begins with the letter t.

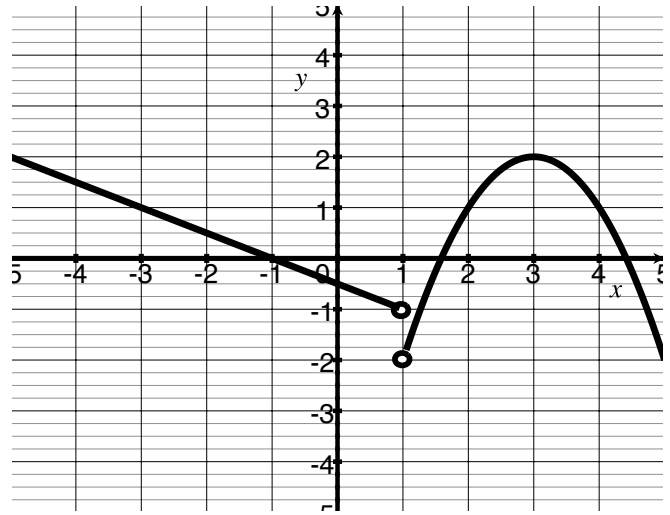
(a) [1] (§1.1 #30) Is the point $(6, s)$ on the graph of G ? Why or why not?

(b) [1] Is G a function? Why or why not.

3. Let g be the piecewise defined graph shown below.

(a) [1] (§1.3 #56) Find $g(-3)$

(b) [2] (§1.1 #44)
Estimate x such that $g(x) = 0$.



(c) [1] (§1.1 #44) Identify or estimate the y intercept.

(d) [1] (FunctionWks #1) What is the domain of g ?