

Quiz 2

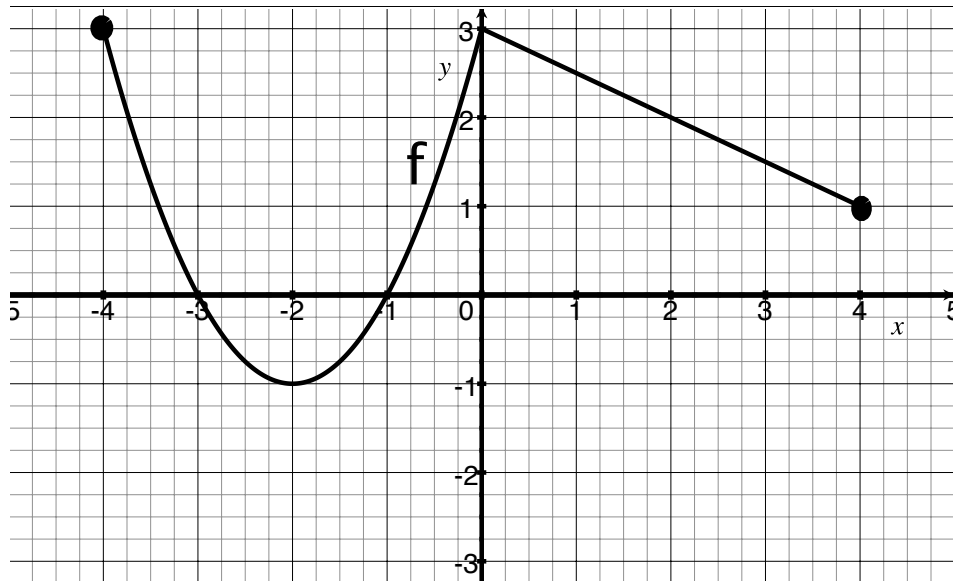
Name(s):

Show *all* your work. Reasonable supporting work must be shown for any partial credit.

1. For this quiz, let f be the function graphed below and $g(x) = \frac{1}{2}f(x) - 1$

(a) [1] Estimate $g(4)$.

(b) [3] Write the graph transformations to transform f into g and then sketch a graph of g .



(c) [1] Find $(f + g)(4)$

(d) [2] Find $(g \circ f)(-3)$

(e) [3] Find the piece-wise defined algebraic rule for the function f of the form:

$$f(x) = \begin{cases} & -4 \leq x \leq 0 \\ & 0 < x \leq 4 \end{cases}$$