

Quiz 0

Show *all* your work. Reasonable supporting work must be shown for any partial credit.

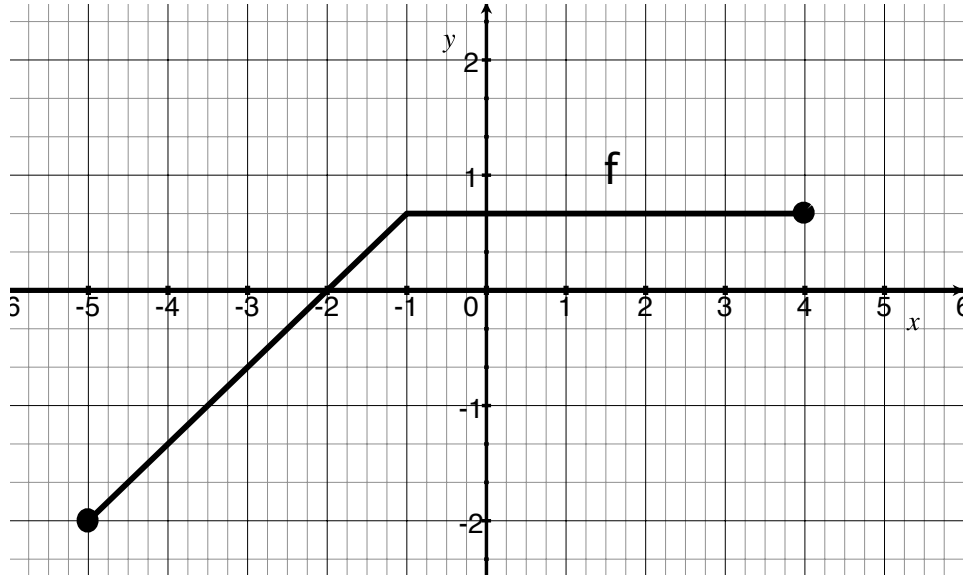
Name(s):

1. Consider the graph of f shown on the right.

(a) [1] Is $(-2, -5)$ on the graph of f ?

(b) [1] Estimate $f(-5)$.

(c) [1] Find the coordinates where f is at a minimum.



(d) [4] Find the piece-wise defined algebraic rule for the function f of the form:

$$f(x) = \begin{cases} & -5 \leq x \leq -1 \\ & -1 < x \leq 4 \end{cases}$$

2. [3] Create a function whose domain is all UWT students. Evaluate this function on yourself.