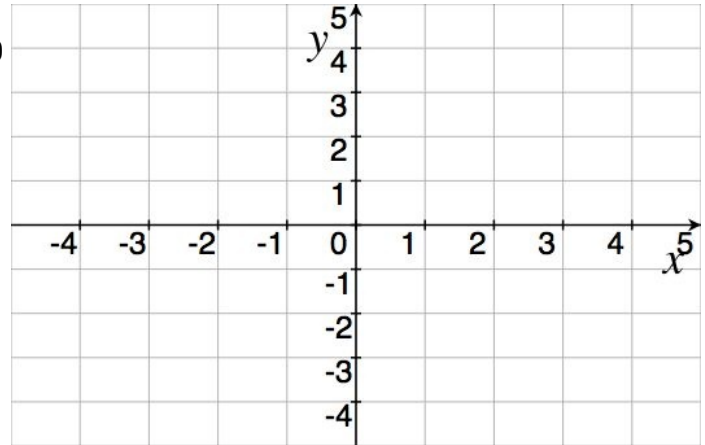


Quiz 2

Show *all* your work. No credit is given without reasonable supporting work. There are *two* sides to this quiz.

1. Let $f(x) = \begin{cases} \frac{2}{3}x - 1 & \text{if } -3 \leq x \leq 0 \\ 2 & \text{if } 0 < x \leq 4 \end{cases}$

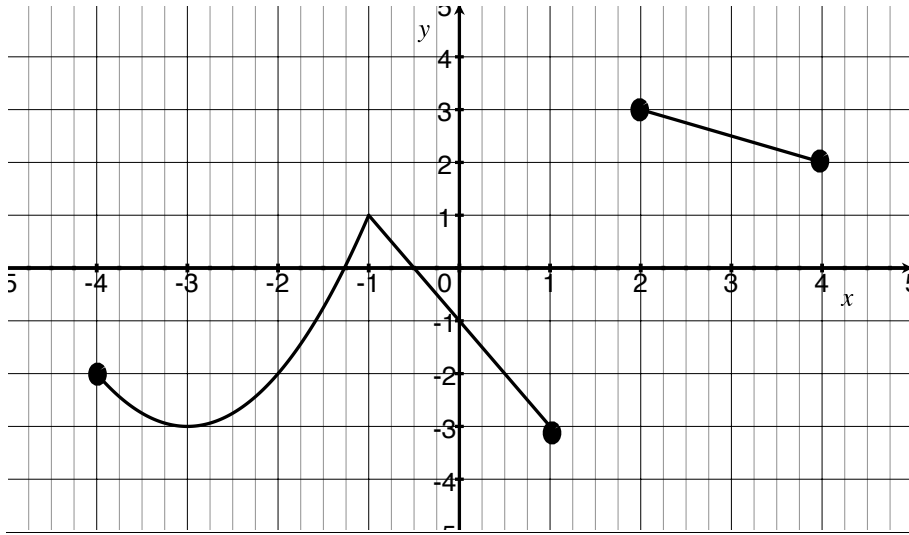


(a) [1] (TransformingWks #1)
Find $f(-3)$.

(b) [1] (§1.6 #38) $(f \circ f)(-3)$

(c) [3] (WebHW2 #10) Graph the function f

2. Let g be the piecewise defined graph shown below.



(a) [2] (WebHW2 #14) Find the average rate of change of g from -3 to 2 .

(b) [3] (§1.5 #86) Graph $-2g(x) - 1$