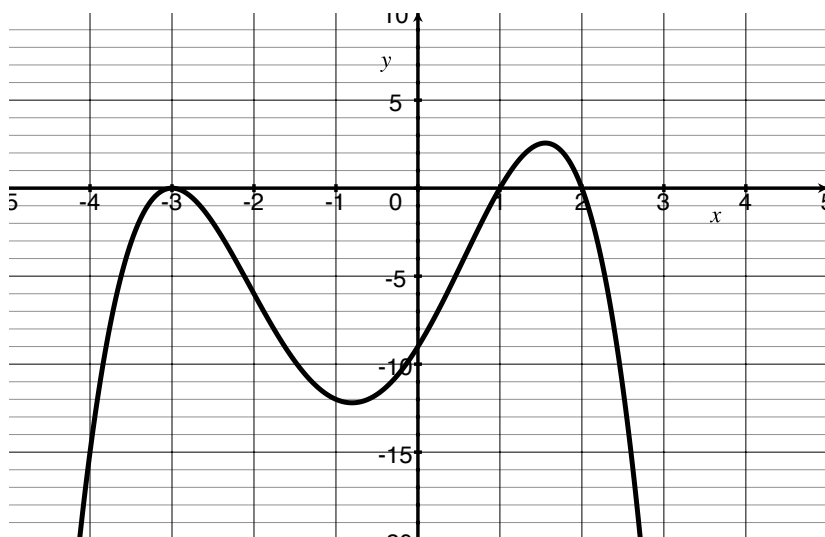


Quiz 3

Show *all* your work. No credit is given without reasonable supporting work. There are *two* sides to this quiz.

1. [1] (Polynomial Wks #1) Explain what the degree of a polynomial is in your own words. Hint: make sure you *use* words!

2. The graph of f has integer x and y intercepts and is shown below.



- (a) [2] (§2.3 #39) Find the equation of the lowest degree for f .

- (b) [2] (Polynomial Wks #11) Given that $m(x) = f(x + 1)$, graph m .

3. [3] (§3.2 #47) Solve for x by writing exponential equation into logarithmic one.

$$\log_{16} \sqrt{x-1} = \frac{1}{4}$$

4. [2] (Lecture)

Draw the graphs of
 $\alpha(x) = \log_2(x)$ and
 $\beta(x) = 2^x$ on the axes
provided. Label each.

