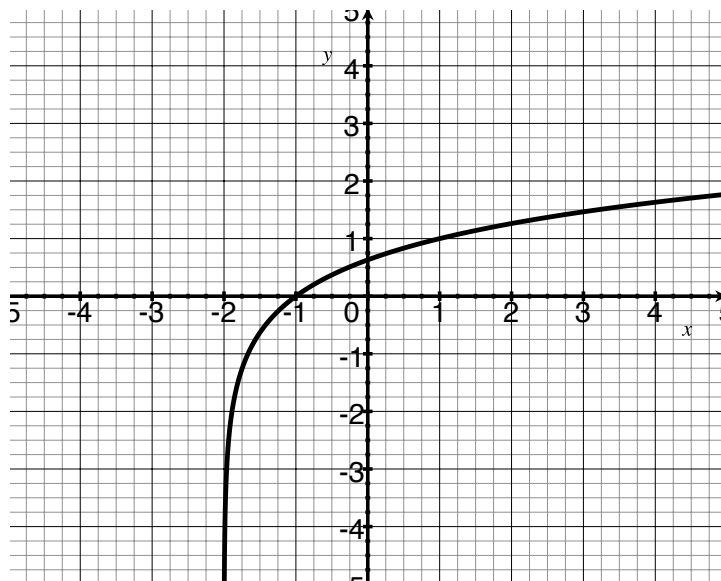


# Quiz 3

Show *all* your work. Reasonable supporting work must be shown for any partial credit.  
There are *two* sides to this quiz.

1. The function  $g$  is a logarithmic function graphed below. The logarithmic graph has been shifted horizontally.

- (a) [2] (WebHW9 #2)  
Does  $g$  have an inverse?  
Why or why not?

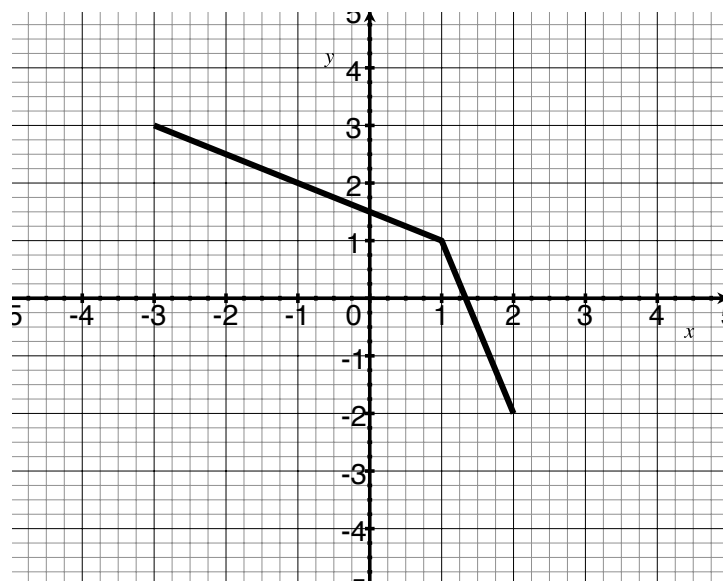


- (b) [2] (WebHW10 #19)  
Find the equation for  $g$ .

2. [3] (WebHW9 #22) Simplify  $\frac{x^3\sqrt{y}}{x^{-1}y}$

3. Let  $f$  be the graph given below:

- [1] (InverseActivity #2)  
What is the range of  $f$ .



- [2] (§1.7 #50) Sketch  
the graph of  $f^{-1}$ .