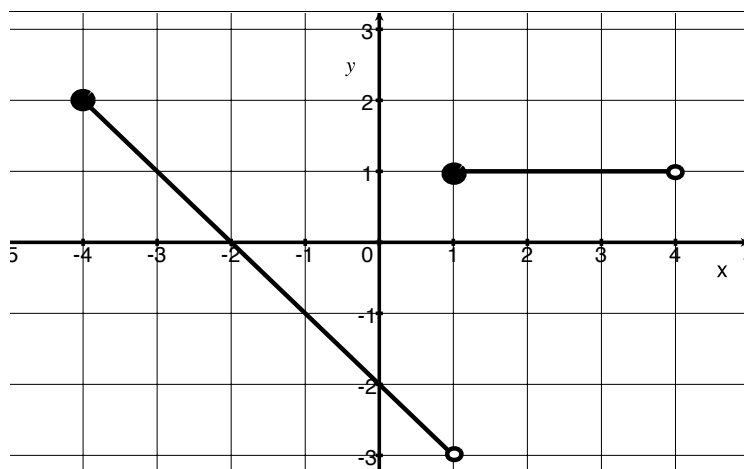


# Quiz 2

Show *all* your work. No credit is given without reasonable supporting work. There are *two* sides to this quiz.

1. Let  $f$  be the graph below and to the right.

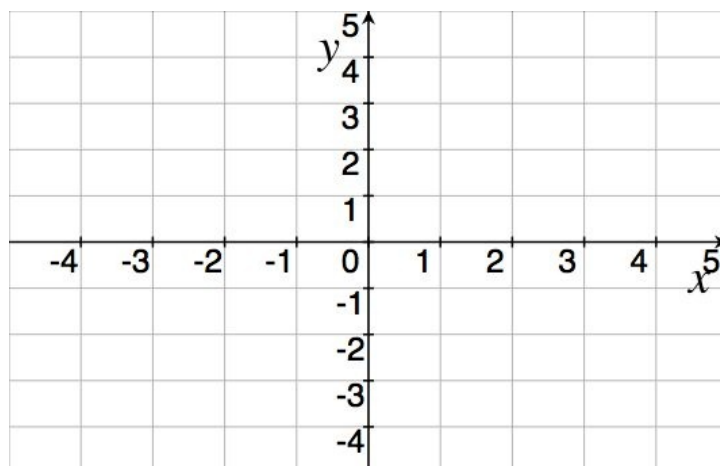
- (a) [1] (graph transf. wks #5)  
Find the domain of  $f$ .



- (b) [2] (graph transf. wks2 #5)  
Graph  $\frac{1}{2}f(x) + 1$

2. [4] (WebHW4 #19) Sketch the graph of

$$g(x) = \begin{cases} 2 & \text{if } x < 0 \\ -3x + 2 & \text{if } 0 \leq x \end{cases}$$



3. [3] (§1.2 #85) Bob currently has \$130 in a Christmas savings account. Bob begins to deposit \$7 a week into the account. Write an equation to describe how much money is in the account and clearly indicate what variables stand for.