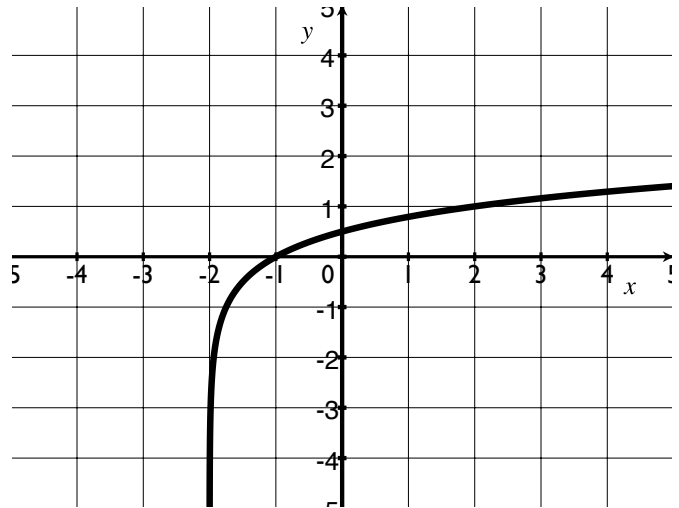


Quiz 4

Show *all* your work. No credit is given without reasonable supporting work. There are *two* sides to this quiz.

1. [3] (LogFunctionWks #4) Let the graph to the right be the $g(x)$. Given that $g(x)$ is an logarithmic function of the form $y = \log_b(x)$ that has been horizontally shifted. Find the equation.



2. [2] (WebHW17 #12) Simplify

$$\frac{2x^{-4}}{2^{-1}x}$$

3. [2] (§3.2 #95) How long would it take to double your money if you invested P dollars at the rate of 8% compounded continuously?

4. [3] (ExpFunctions Wks #2) Graph $2 \cdot 3^{x+1}$

