

tc core 112: Quiz 4

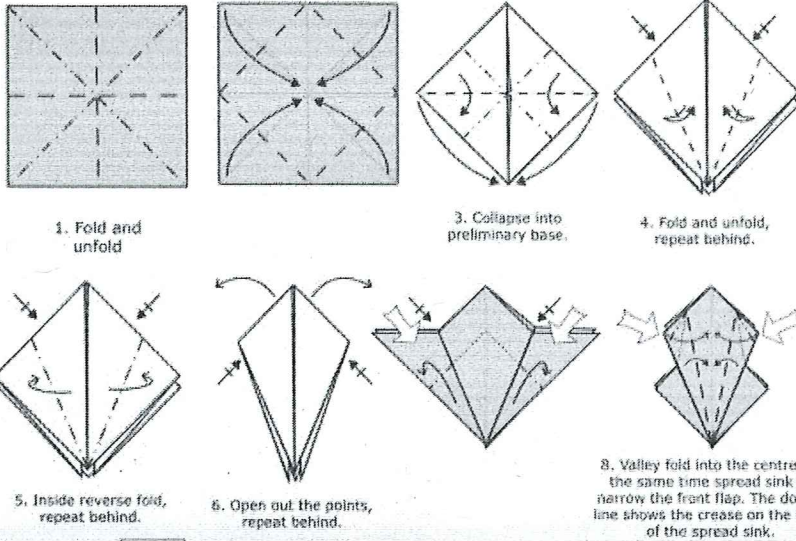
Key

There are two sides to this quiz. You can use a calculator and a five-sided 3x5" notecard with anything written or typed on it.

1. [4] (Lang pg 93-97) Identify the name of the base and it's variation that is used in the directions below.

Octopus by Lee Armstrong

start (1)
in Lang (1)



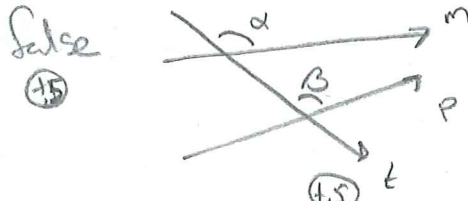
blitzed bird base
(1) (1)

~~not a preliminary fish~~
P.

2. (Activity3 #4) Consider a transversal line t making eight angles as it crosses lines m and p . For each of the following statements, if they are *always* true, write true and provide brief justification. If the statement is not always true, provide an example when the statement is false.

- (a) [3] Corresponding angles have the same measure.

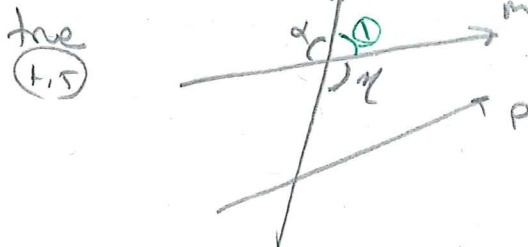
start (1.5)
sense (1.5)
if assume // (1.5)
notation (1.5)



[If m and p are not parallel, corresponding angles are dif. measures. (making justification)]

- (b) [3] Vertical angles have the same measure.

start (1.5)
sense (1.5)
notation (1.5)



or notice
(making justification)
 $\angle \alpha + \angle \beta = 180^\circ$ and
 $\angle \gamma + \angle \delta = 180^\circ$
subtract 2nd equation from 1
 $\Rightarrow \angle \alpha - \angle \gamma = 0$
 $\Rightarrow \angle \alpha = \angle \gamma$ "

(1.5) [we learned this from Activity 1] " " " " " "
If we use patty paper we can fold angle α onto γ

3. [2] (Lang pg 97-100) Describe a scenario when an origami designer may want to use the Yoshizawa split.

Start (1.5)
Sense (1.5)

The origami piece has one flap but two is needed.
For example one flap can be split w/ the Yoshizawa split to create ears, paws, toes, etc.

4. [3] (Class Discussion 2/21) Describe a scenario in which you may choose to change a grading option from standard (S) to non-standard (NS).

Start (1.5)
Sense (1.5)
Scenario (1)

Recall S is the standard 4.0 scale & NS is pass/no pass option.
Recall also that classes with NS option cannot count towards your major.

If in a situation where a certain GPA is needed to maintain financial aid packages & I know I cannot pass the course.
If I have 2 classes and I don't have time for both I can sacrifice one w/ NS.

5. [5] (Class Folding 2/19) Fold a stretched bird base. Note that the bird base directions are below if needed, but the stretched variation does not have directions (at least found in Lang's text!)

