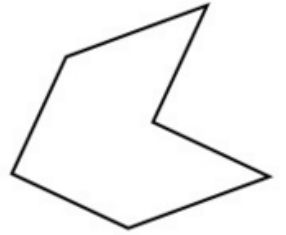


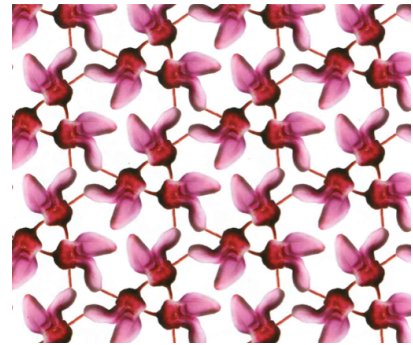
# Tiling 2D generally

following Conway's et al in *The symmetries of Things* sections 1 & 2

1. Find the signature for each of the following:

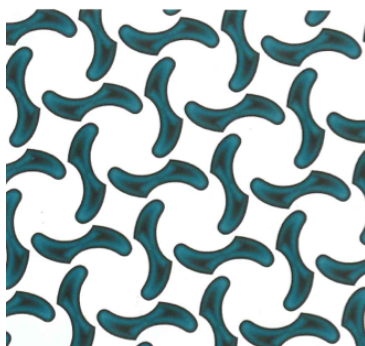


2. Find the signature for each of the following tilings:



3. Determine the cost for  $n$  to complete the table on the right.

4. For each of the tilings, find the signature and the cost:



Symbol	Cost (\$)	Symbol	Cost (\$)
○	2	* or ×	1
2	$\frac{1}{2}$	2	$\frac{1}{4}$
3	$\frac{2}{3}$	3	$\frac{2}{6}$ or $\frac{1}{3}$
4	$\frac{3}{4}$	4	$\frac{3}{8}$
5	$\frac{4}{5}$	5	$\frac{4}{10}$ or $\frac{2}{5}$
6	$\frac{5}{6}$	6	$\frac{5}{12}$
...	...	...	...
$n$	$\frac{??}{??}$	$n$	$\frac{n-1}{2n}$
∞	1	∞	$\frac{1}{2}$