

# 3D Functions

While working in a group make sure you:

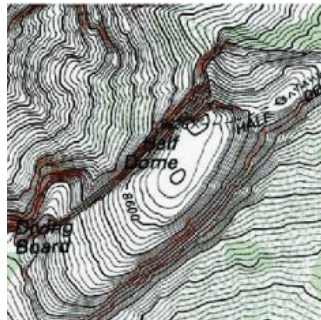
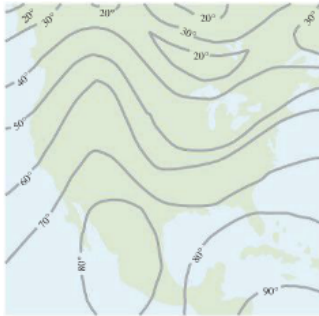
- Expect to make mistakes but be sure to reflect/learn from them!
- Are civil and are aware of your impact on others.
- Assume and engage with the strongest argument while assuming best intent.

1. Determine which of the following define  $z$  as a function of  $x$  and  $y$ . If a function, determine its domain.

$$z = \ln(xy)$$

$$z^2 + 4 = x^2 + \frac{y^3}{2}$$

$$zxy = x + y$$



2. For each of the following, find the domain, range, and match the function with its level curves.

$$f(x, y) = y - x$$

$$g(x, y) = \sqrt{25 - x^2 - y^2}$$

$$h(x, y) = e^{-x^2 - y^2}$$

