

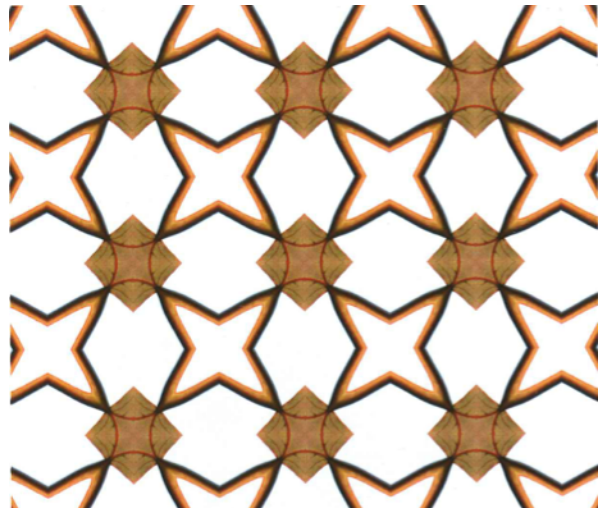
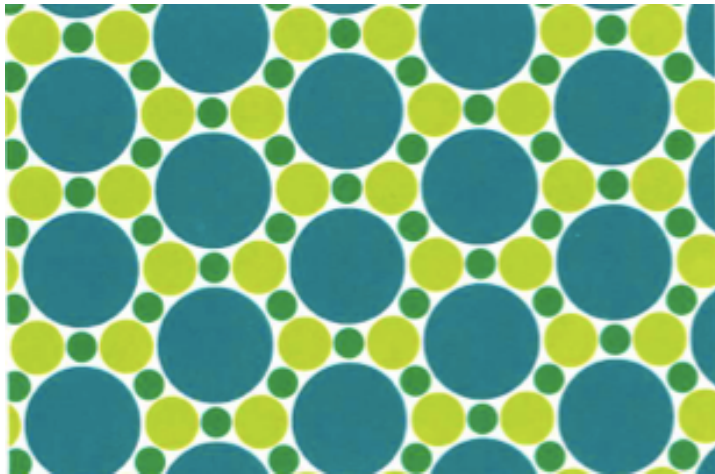
Tiling 2D using Mirrors

following Conway's et al in *The symmetries of Things* sections 1 & 2

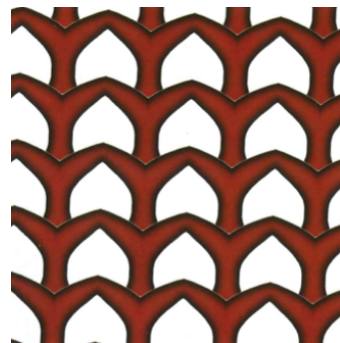
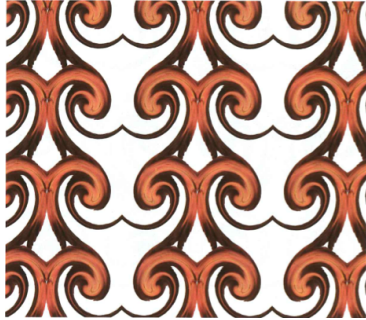
1. For each of the following, find the mirror lines and then the signature:



2. For each tiling below, find the mirror lines and then the signature:



3. Fill in the missing table entry.
4. For each of the tilings below, find the signature and the cost:



| Symbol | Cost (\$) |
|----------|---------------------------------|
| * or × | $\frac{1}{4}$ |
| 2 | $\frac{1}{4}$ |
| 3 | $\frac{2}{6}$ or $\frac{1}{3}$ |
| 4 | $\frac{3}{8}$ |
| 5 | $\frac{4}{10}$ or $\frac{2}{5}$ |
| 6 | $\frac{5}{12}$ |
| ... | ... |
| n | ?? |
| ∞ | $\frac{1}{2}$ |