

# Exchange and Interaction in ISEA

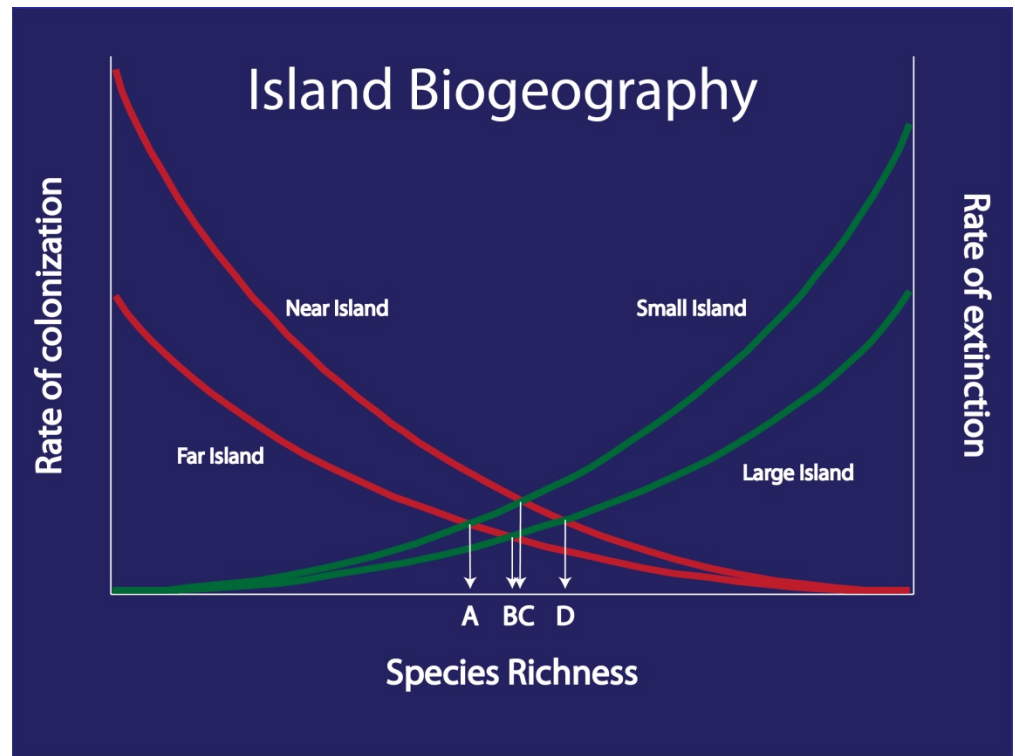
---

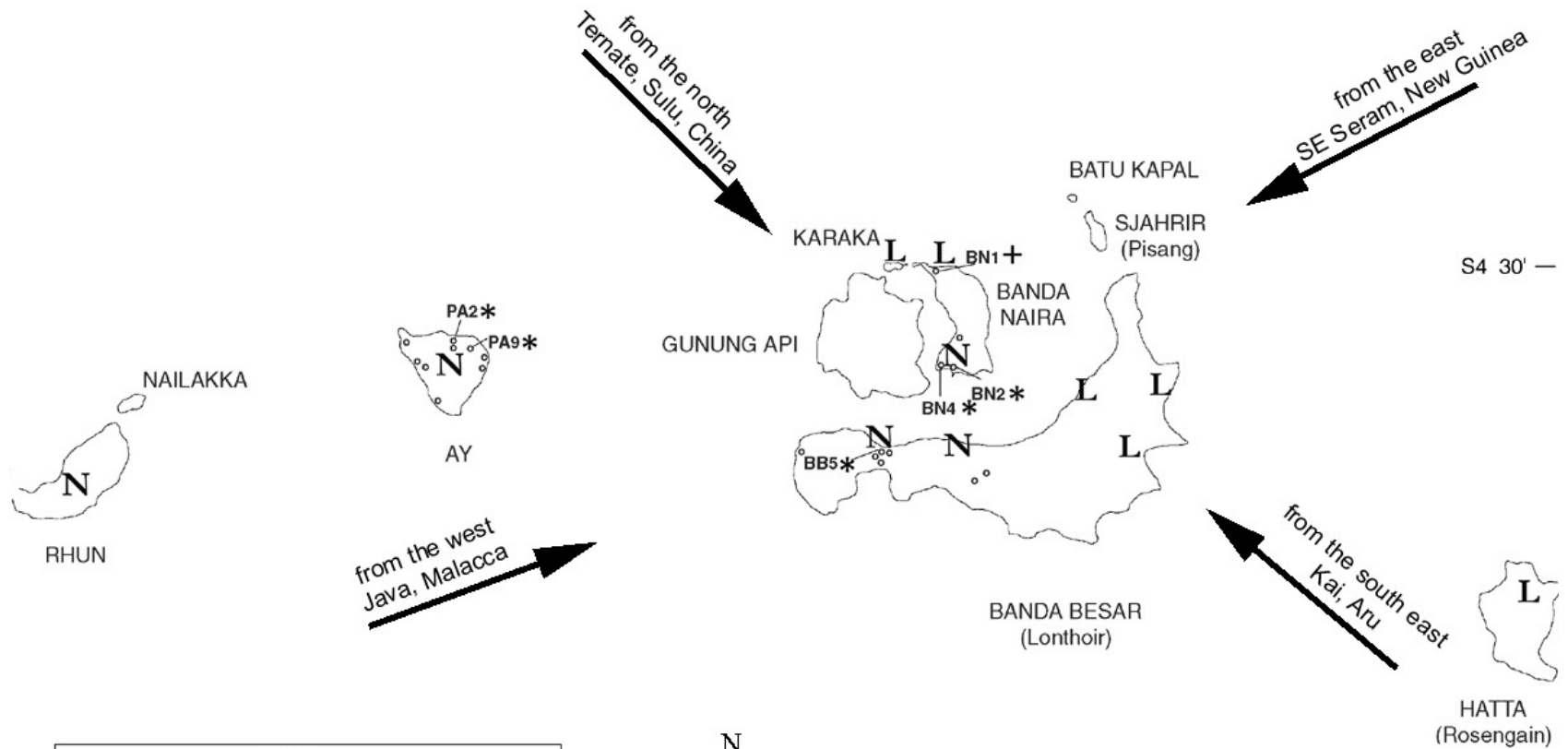
# Isolation



# Distance

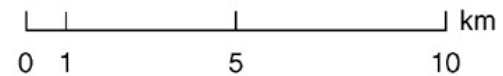
- In Island Biogeography isolation=distance
- Problematic as a measure of social proximity



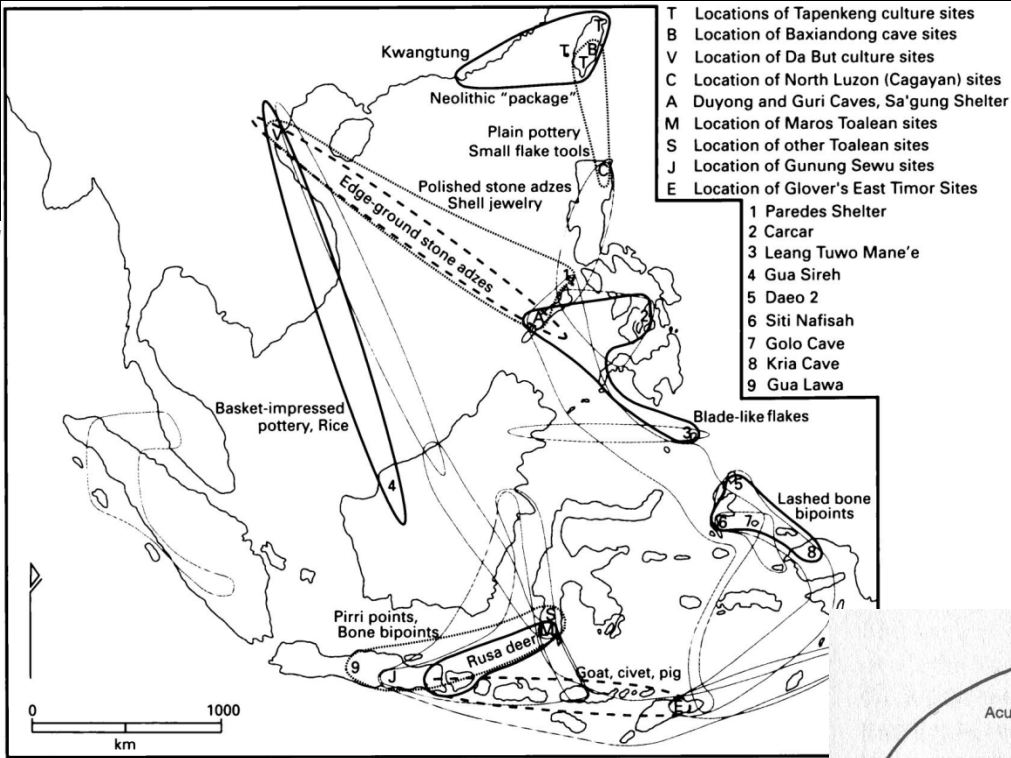


**KEY**

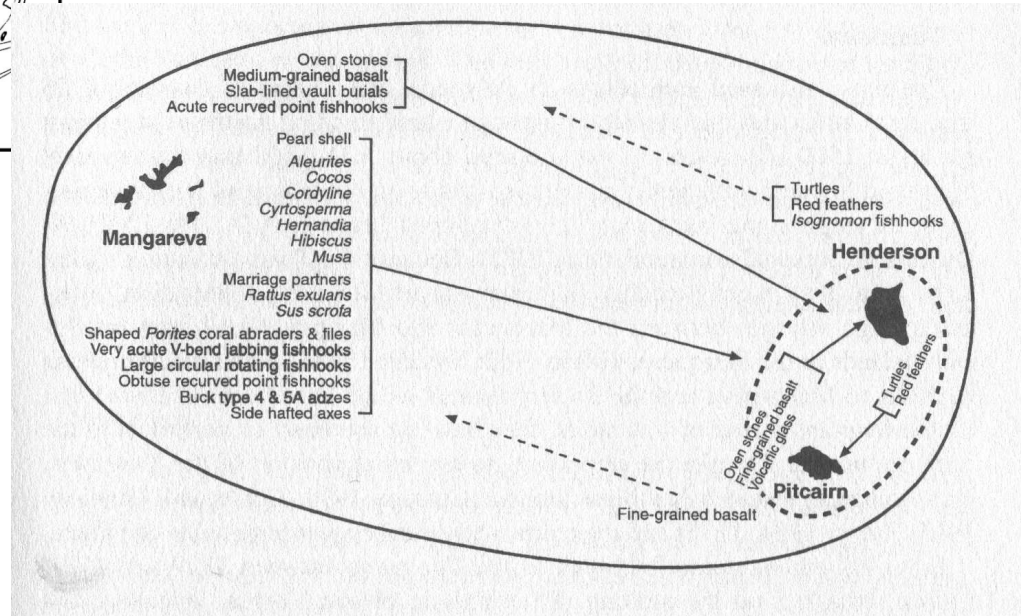
RHUN	contemporary island name
L	member of Labbetacca alliance
N	member of Nera alliance
BN1	archaeological site
+	pig remains present
*	pig remains absent







(Bulbeck 2008, p. 45)



(Weisler 2002, p. 261)

# Connectedness

*The degree of social isolation of a group*

- Independent of distance
- Allows comparison between
  - Sites
  - Time periods
  - Different materials
  - Different types of data

# Source Diversity

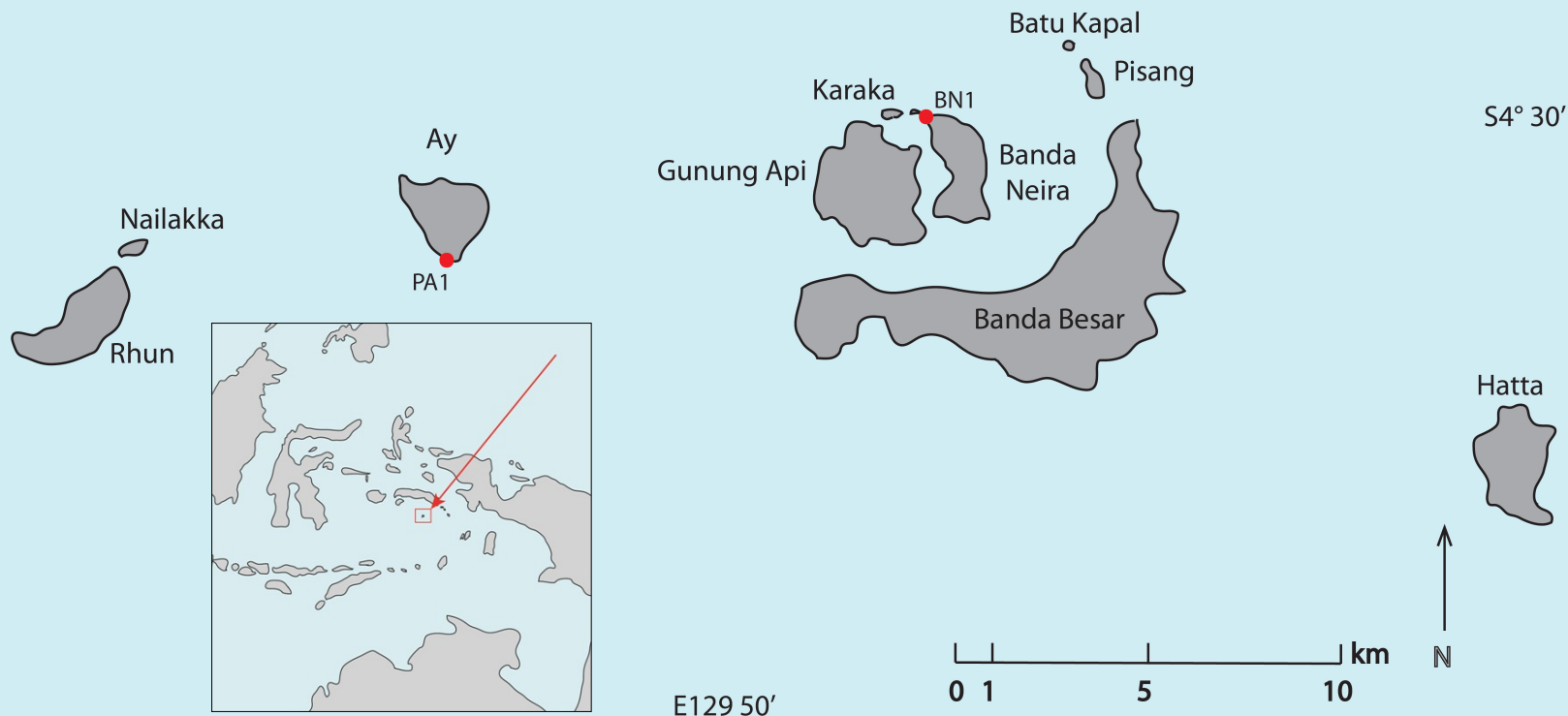
- Archaeological proxy for connectedness
  - Does not require that the exact source location be known only that it be distinguishable from other sources
  - Analagous to species richness/species diversity
  - Can be measured various ways (Richness, Shannon index, Simpson index)

# Research Questions

- Did the inhabitants of the Banda Islands participate in exchange/interaction networks during the Neolithic period?
- How did exchange/interaction networks change over time?
- Did people build more diverse exchange/interaction networks during periods of environmental variability?

# The Banda Islands

The Banda Islands, Maluku Province, Indonesia

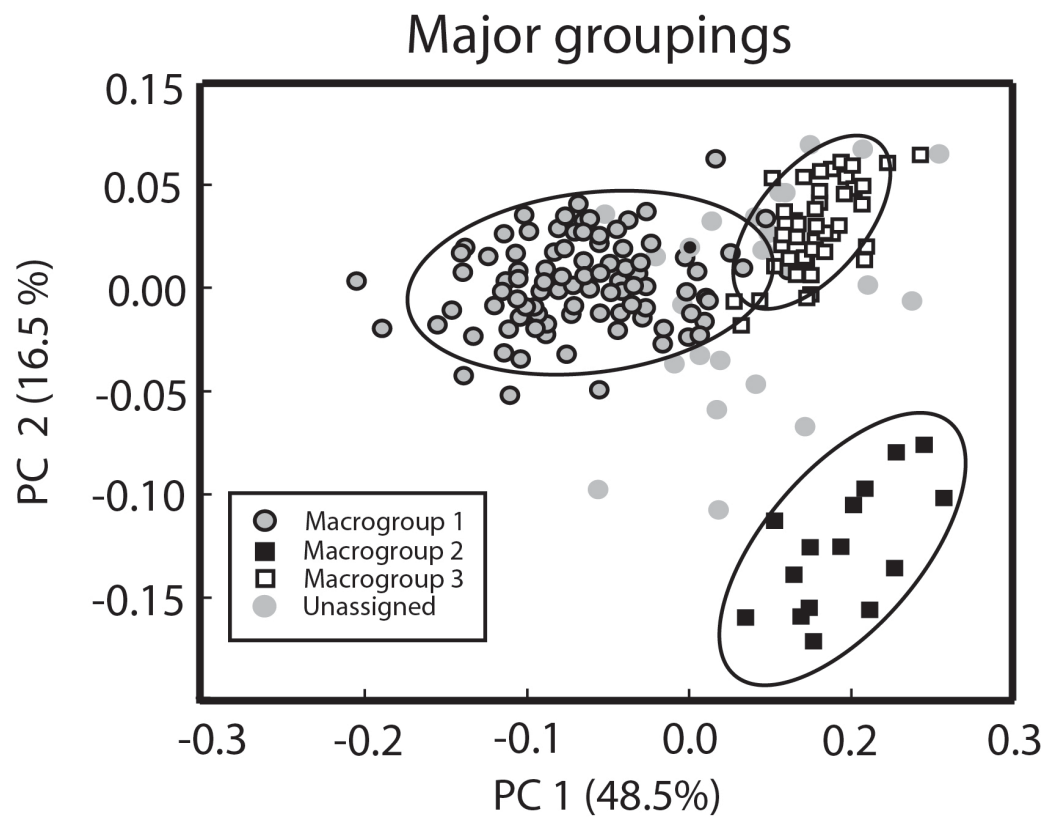
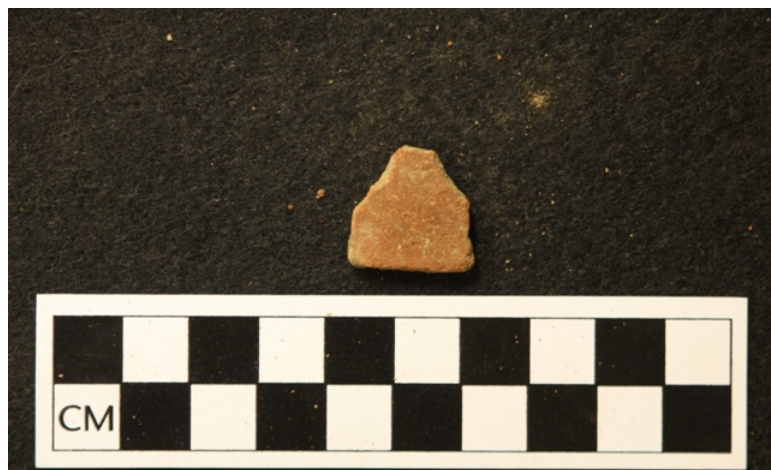


# The Banda Islands

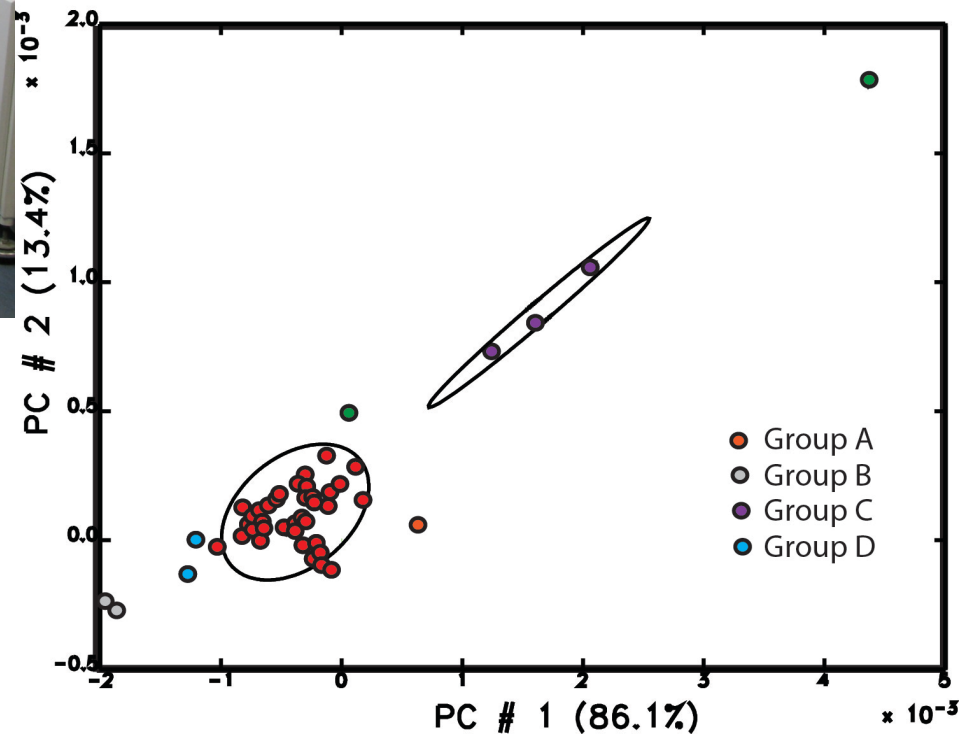




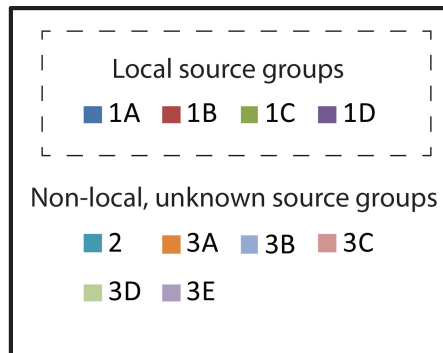
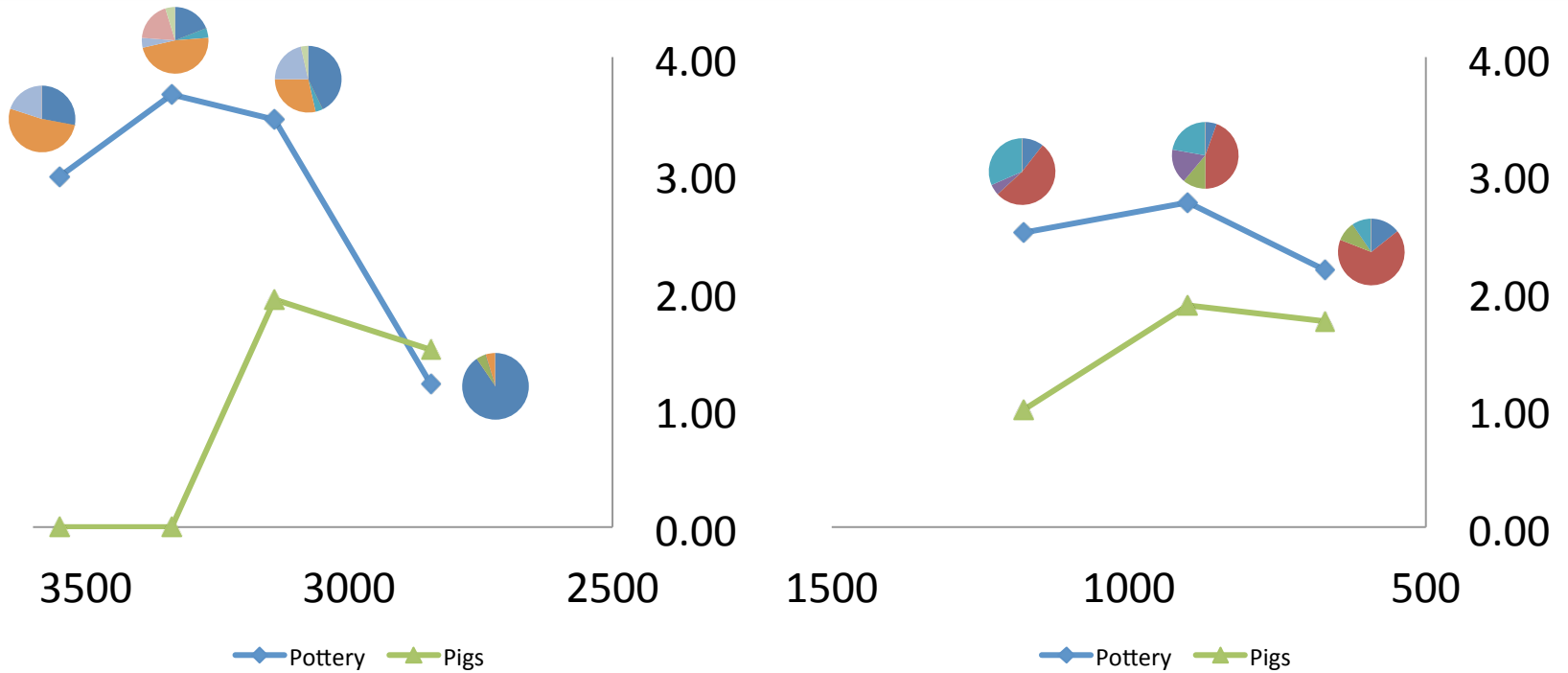
# Pottery: LA-ICP-MS



# Pigs: Stable Isotope Analysis

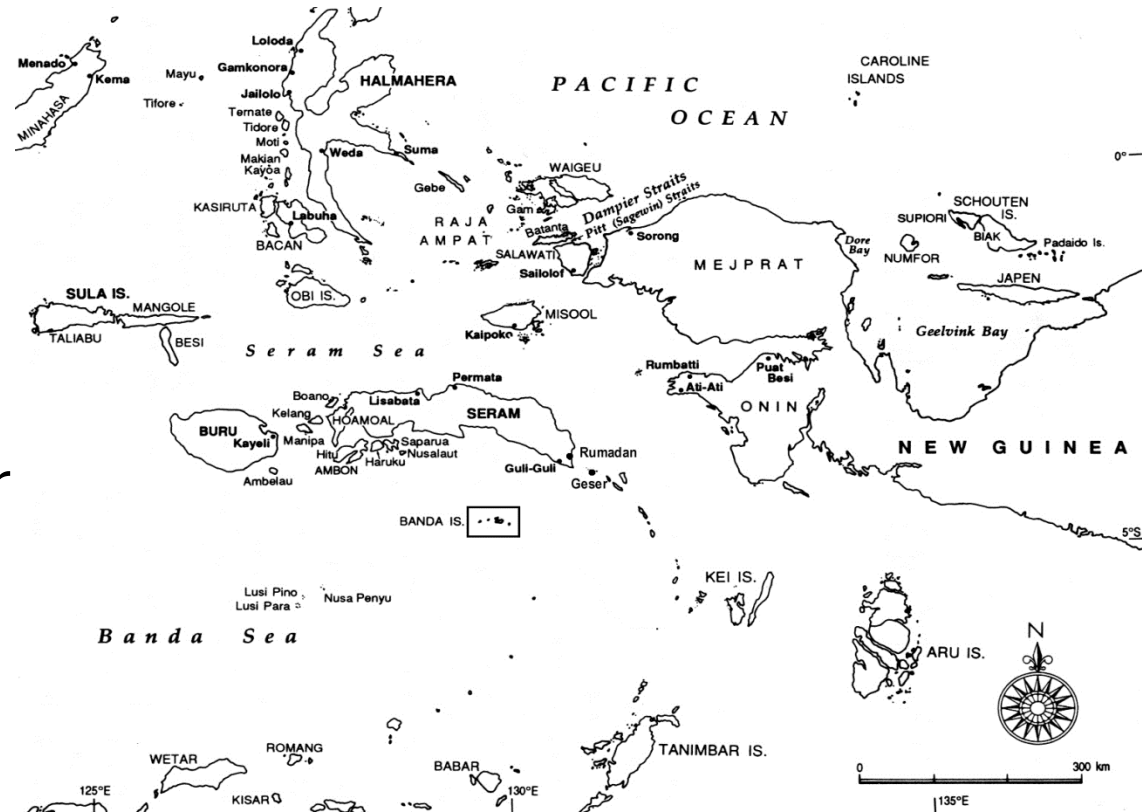


# Results



# Did the inhabitants of the Banda Islands participate in exchange/interaction networks during the Neolithic period?

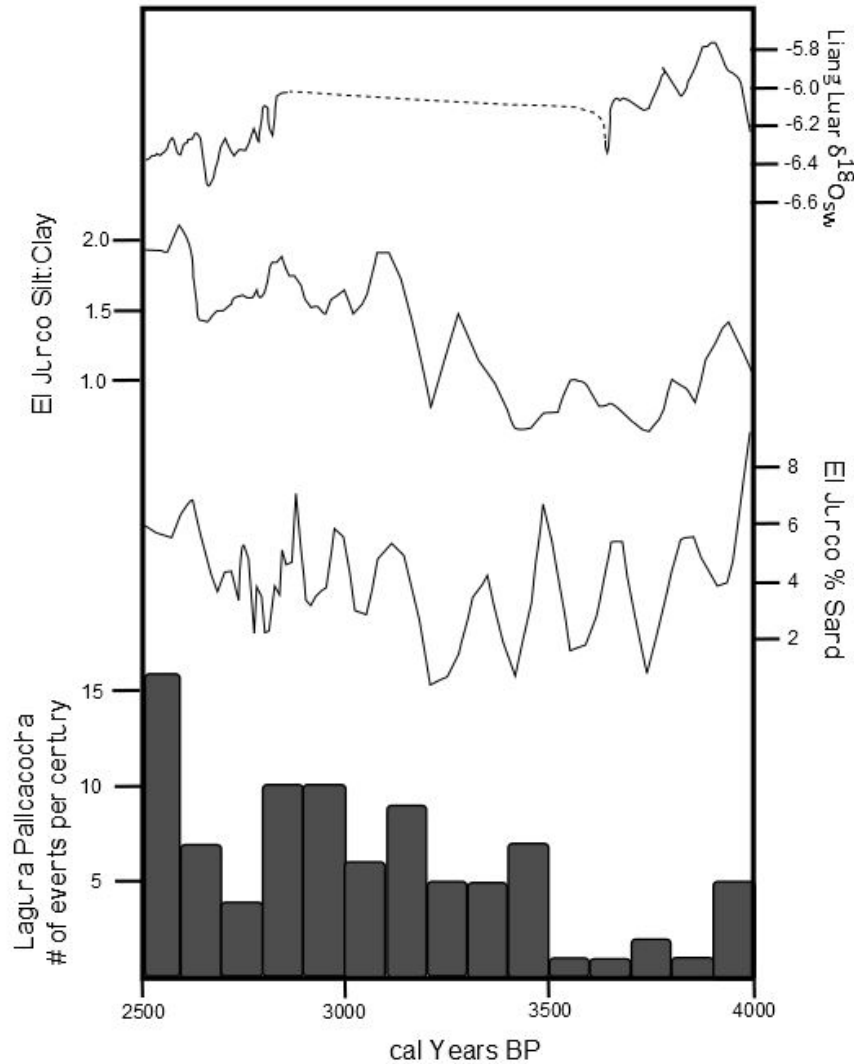
- Yes. People living in the Banda Islands exchanged pottery with people living in Aru, Seram, Ambon, and potentially several other places.
- Pigs from several non-local sources brought to Banda.



# How did exchange/interaction networks change over time?

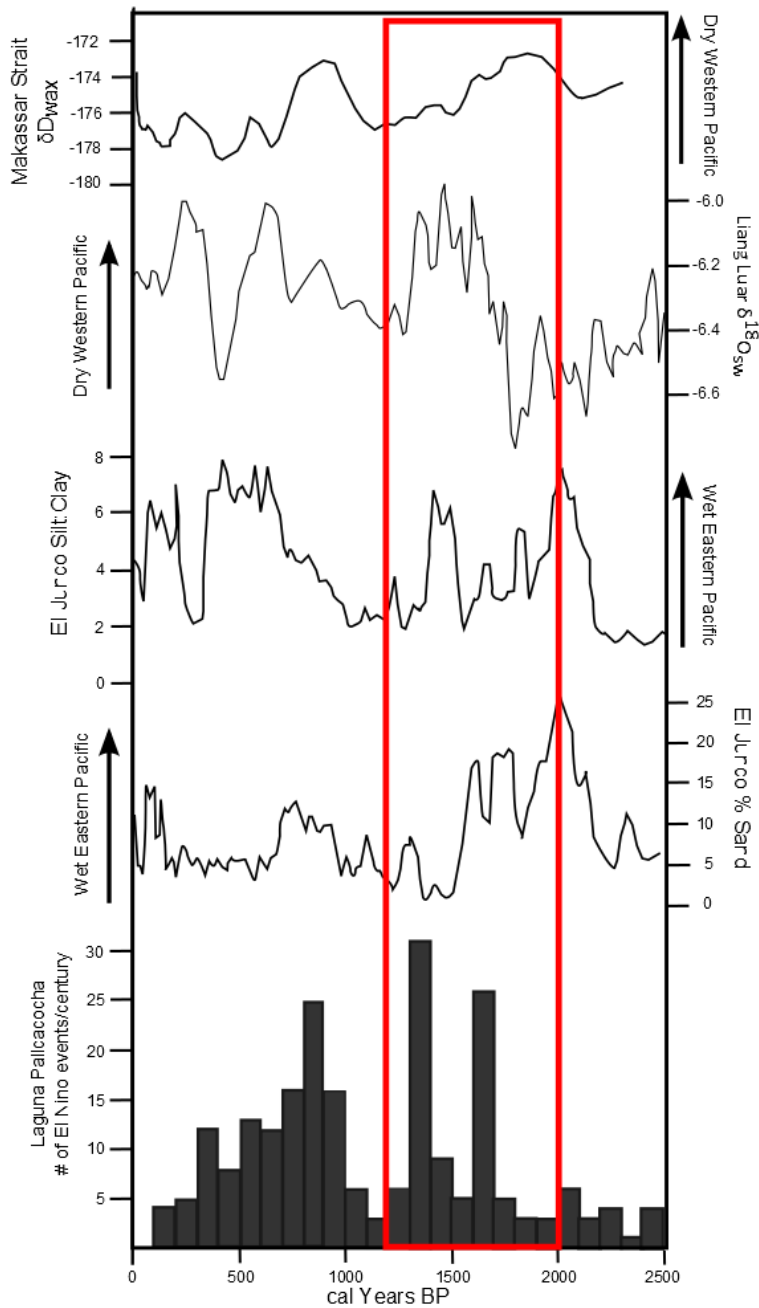
- They were more diverse during the early Neolithic and then appear to contract later with increasing focus on local production.
- Pottery results suggest that some communities may have interacted more outside the Bandas than within the island group.
- Pigs have similar pattern and very comparable diversity between sites.

# Climate



- Some paleoclimate proxies indicate increase in El Nino frequencies around 3000 BP





- ~2000-1500 BP climate was highly variable with major changes in rainfall in Maluku

# Did people build more diverse exchange/interaction networks during periods of environmental variability?

- Possible correlation around 3000BP but can't precisely date climatic shifts without a single, local, high resolution proxy.
- Later climate change around 2000 BP may have been so severe that limestone islands became uninhabitable.
- I can neither confirm nor deny...