



JFK High School



Ridgemont High School



Find Your High School Here



Search

TERRADAILY

NEWS ABOUT PLANET EARTH

Get Our Free Newsletters Via Email

your email address

yes

Search All Our Sites at SpaceBank

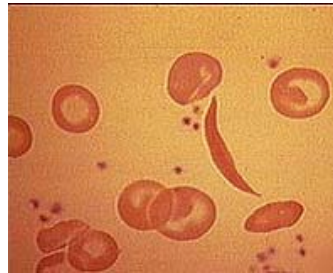
Search

FLORA AND FAUNA

Bioengineers Devise Nanoscale System To Measure Cellular Forces

by Staff Writers
University Park PA (SPX) Aug 29, 2007

University of Pennsylvania researchers have designed a nanoscale system to observe and measure how individual cells react to external forces. By combining microfabricated cantilevers and magnetic nanowire technology to create independent, nanoscale sensors, the study showed that cells respond to outside forces and demonstrated a dynamic biological relationship between cells and their environment.



To study the cell's biomechanical response to forces, Chen and his team applied force to each cell using microfabricated arrays of magnetic posts containing cobalt nanowires interspersed amongst an array of non-magnetic posts.

The study also revealed that cells sense force at a single adhesion point that leads not to a local response but to a remote response from the cell's internal forces, akin to tickling the cell's elbow and watching the knee kick.

"The cell senses the force that we apply and adjusts its own internal forces to compensate," Chris Chen, an associate professor in the Department of Bioengineering in the School of Engineering and Applied Science at Penn, said. "This suggests that either the cell's cytoskeleton dictates the reaction or the cell organizes a biochemical response. In either instance, cells are adapting at the microscale."

The findings prove useful to more than just an understanding of the mechanics of single cells. Physical forces play a strong role in how whole tissue grows and functions. Using the Penn system, researchers could monitor for differences in how forces are sensed or generated in normal and diseased cells. This could lead to new therapeutic drug targets and to methods for modifying how cells interact with each other.

To study the cell's biomechanical response to forces, Chen and his team applied force to each cell using microfabricated arrays of magnetic posts containing cobalt nanowires interspersed amongst an array of non-magnetic posts. In the magnetic field, the posts with nanowires applied an external force to cells cultured on the tops of the posts. Nonmagnetic posts acted as sensors in which traction forces in each cell were measured. Recording the traction forces in response to such force stimulation revealed two responses: a sudden loss in contractility that occurred within the first minute of stimulation or a gradual decay in contractility over several minutes.

For both types of responses, the subcellular distribution of loss in traction forces was not confined to locations near the actuated micropost or uniformly across the whole cell but instead occurred at discrete locations along the cell periphery.

Customize your bundle of services and save.

Get Broadband Internet + Local Phone Package for less than **\$57/mo.**

[BUILD YOUR BUNDLE NOW](#)

[REPLAY >>](#)

Magnetic Sensors

Order Sensors Online or by Phone. Check Stock - Ship Same Day
www.digikey.com

ALPS Magnetic Sensors

Wide range, highly reliable sensing Find your sensing future at ALPS
www3.alps.co.jp/sensor/index

Ads by Google

GOVERNMENT
SCIENCE
GPS DAILY
CONSUMER
COMMERCIAL

[HTTP://WWW.GPSDAILY.COM](http://www.gpsdaily.com)

Together, these data suggest that cells actively adjust their internal tension to mechanical forces arising in their microenvironment and reveal an important dynamic biological relationship between external and internal forces.

Mechanical forces contribute to many cellular functions, including changes in gene expression, proliferation and differentiation.

Applying shear or tensile stresses to cells in culture, for example, can induce changes in adhesion regulation, intracellular signaling and cell function much like internal forces do. The similarities in cellular responses to external and internal forces have led to the suggestion that both types of forces may use shared mechanotransduction pathways to convert mechanical stimuli into biochemical signals. While externally applied and internally generated forces may act independently on cells, the University of Pennsylvania team postulated and then showed that they are coupled.

The study was conducted by Chen, Nathan J. Sniadecki, Michael T. Yang and Zhijun Liu of the Department of Bioengineering as well as Alexandre Anguelouch, Corinne M. Lamb, Stuart B. Kirschner, Yaohua Liu and Daniel H. Reich of Johns Hopkins University. The research was funded by grants from the National Institutes of Health, an Army Research Office Multidisciplinary University Research Initiative, the Material Research Science and Engineering Center of Hopkins and Penn's Nano/Bio Interface Center.

Community

[Email This Article](#)
[Comment On This Article](#)

Related Links

[University of Pennsylvania](#)
[Darwin Today At TerraDaily.com](#)

Ads by Google

[Magnetic Bioseparation](#)
[Magnetic Isolation](#)
[Magnetic Protein Purification](#)
[Magnetic Induction](#)
[Magnetic Current Sensor](#)

Ads by Google

Automated Cell Separation

RoboSep is the only fully automated magnetic cell separator.
www.stemcell.com

Magnetic Bracelets

Worn by Arnold Palmer. 60 Day Warranty. Free Bracelet w/ \$75 Buy
www.AceMagnetics.com

Magnetic Motors

Rankin USA is a source for parts & international automation components
RankinUSA.com

SmCo - Applied Magnets

Lowest Price, Top Quality, In Stock Deep Manufacturer Volume Discount
www.magnet4less.com

Functional Nano

The smallest, strongest & fastest Magnetic nanoparticles. Buy online!
www.TurboBeads.com

FLORA AND FAUNA

First Orchid Fossil Puts Showy Blooms At Some 80 Million Years Old



Cambridge MA (SPX) Aug 30, 2007

Biologists at Harvard University have identified the ancient fossilized remains of a pollen-bearing bee as the first hint of orchids in the fossil record, a find they say suggests orchids are old enough to have co-existed with dinosaurs.



[Memory Foam Mattress Review](#)

SPACE MEDIA NETWORK CLASSIFIED ADVERTISING

[Solar Energy Solutions](#) ::
[Shop for telescopes online](#) :: [Tempur-Pedic Mattress Comparison](#)
[Myspace Layouts Editor](#)

Newsletters :: [SpaceDaily Express](#) :: [SpaceWar Express](#) :: [TerraDaily Express](#) :: [Energy Daily](#)
XML Feeds :: [Space News](#) :: [Earth News](#) :: [War News](#) :: [China News](#)

DISASTER MANAGEMENT

- Devastated New Orleans mourns Katrina dead two years on
- NKorea searches for fugitives after floods: aid group
- Death toll mounts as floods, heat wave batter US
- Dean's death toll rises with new deaths in Mexico

EARTH OBSERVATION

- European Hot Spots And Fires Identified From Space
- China Develops Beidou Satellite Monitoring System
- DigitalGlobe Announces Launch Date For WorldView-1
- Radar reveals vast medieval Cambodian city: study

CLIMATE SCIENCE

- Flooding risk from global warming badly under-estimated: study
- Greenhouse Gases Likely Drove Near-Record US Warmth In 2006
- Corals And Climate Change
- Climate Change Goes Underground

ENERGY TECH

- OSU Sweet Biofuels Research Goes Down On The Farm
- Grain Will Not Become Oil
- Nigeria losing \$14 billion a year in oil
- Analysis: Venezuelan energy chief fined

EPIDEMICS

- Discovery May Help Defang Viruses
- Nanoparticle Could Help Detect Many Diseases Early
- Online gamers rehearse real-world epidemics
- China probably 'covered up' pig disease outbreaks

FROTH AND BUBBLE

- Innovative Civil Engineering Application Promises Cleaner Waters
- Team Tracks Antibiotic Resistance From Swine Farms To Groundwater
- e-Science Points To Pollution Solutions
- Toxic Air Pollution In Urban Parking Garages Study Finds SUVs Bigger Polluters

FLORA AND FAUNA

- Bioengineers Devise Nanoscale System To Measure Cellular Forces
- Social Parasites Of The Smaller Kind
- The World's Oldest Bacteria
- Adaptation To Parasites Drive African Fishes Along Different Evolutionary Paths

ABOUT US

- Not All Risk Is Created Equal
- Area Responsible For Self-Control Found In The Human Brain
- Milestone In The Regeneration Of Brain Cells: Supportive Cells Generate New Nerve Cells
- Gene Regulation, Not Just Genes, Is What Sets Humans Apart

The content herein, unless otherwise known to be public domain, are Copyright 1995-2007 - SpaceDaily.AFP and UPI Wire Stories are copyright Agence France-Presse and United Press International. ESA Portal Reports are copyright European Space Agency. All NASA sourced material is public domain. Additional copyrights may apply in whole or part to other bona fide parties. Advertising does not imply endorsement, agreement or approval of any opinions, statements or information provided by SpaceDaily on any Web page published or hosted by SpaceDaily. [Privacy Statement](#)