

ME 478 Homework #2

Please show your work and draw a box around your answer to receive full credit.

- 1) The members of the truss shown in Figure 1 have a cross-sectional area of 2 in^2 and are made of structural steel ($E = 30 \times 10^6 \text{ lb/in}^2$). There is a fixed boundary condition at node 1 and a roller boundary condition at node 3. Use Matlab to determine the deflection at each joint and the reaction forces. Draw boxes around your answers.

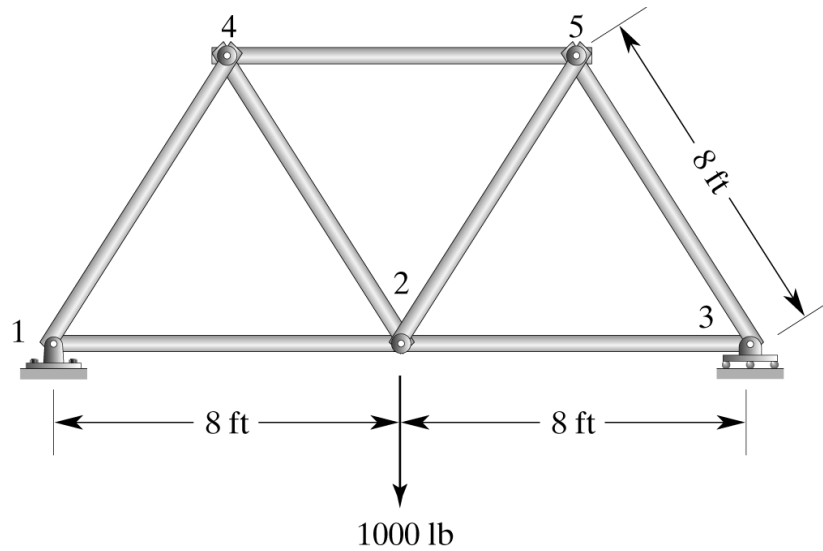


Figure 1.