

ME 411 / ME 511

# Biological Frameworks for Engineers

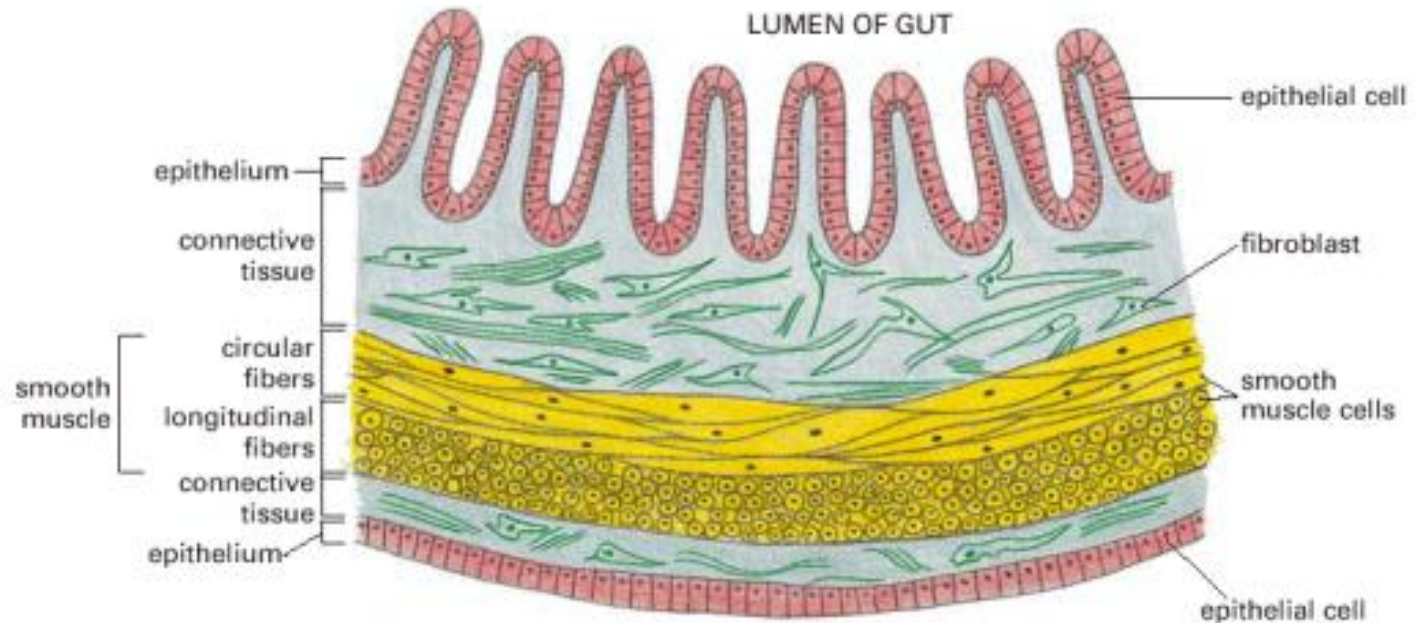
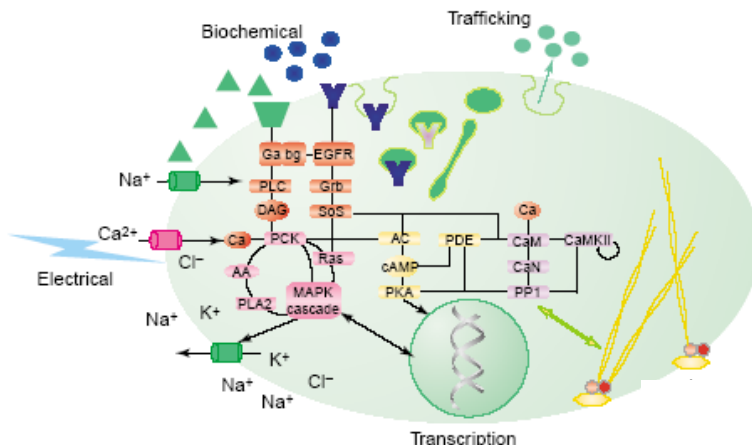
# Class Organization

- Exam 1
  - Take-home (honor code)
  - Due Wed 10/31/12
- No Class
  - Wed 10/24
- Lab 2 report
  - Due on Fri 10/26

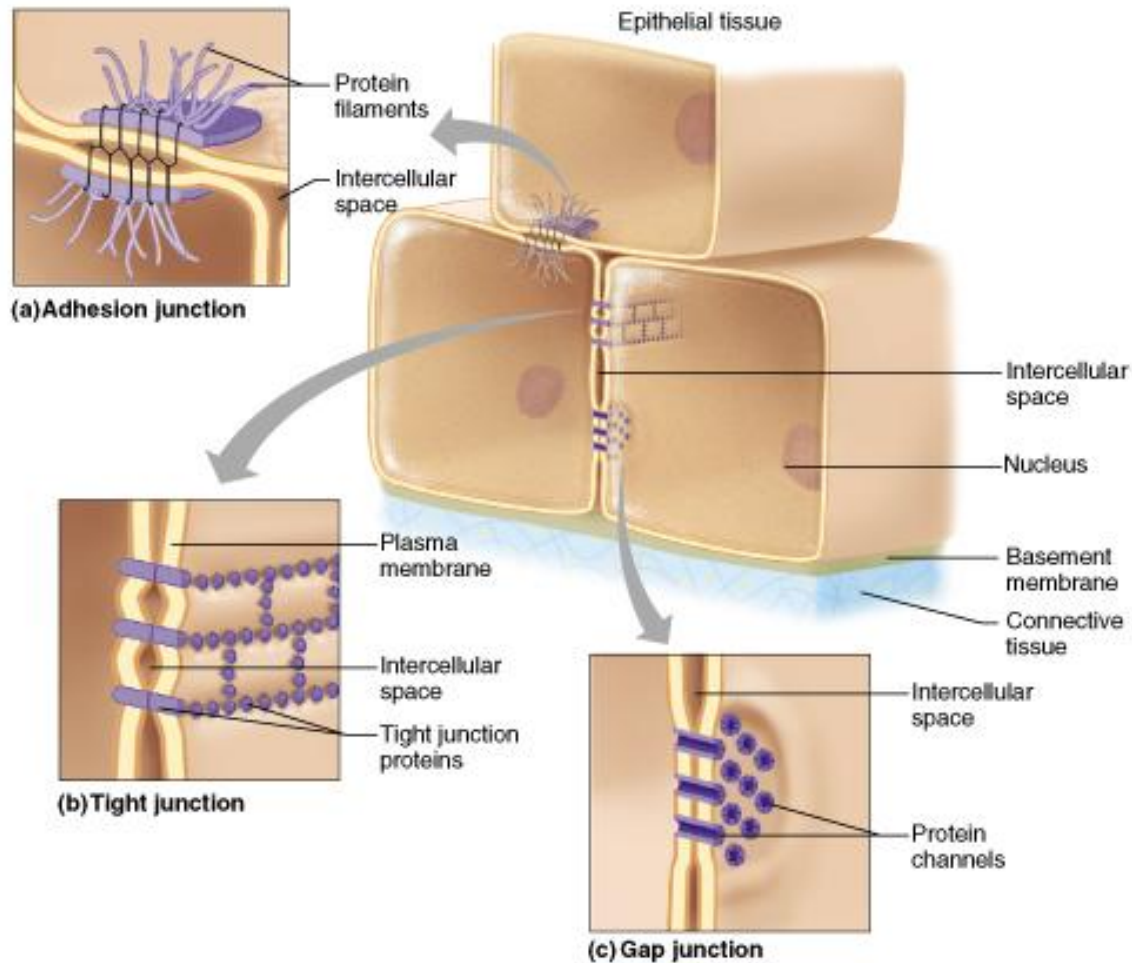
ME 411 / ME 511

# Cell Interactions

# No Cell is an Island

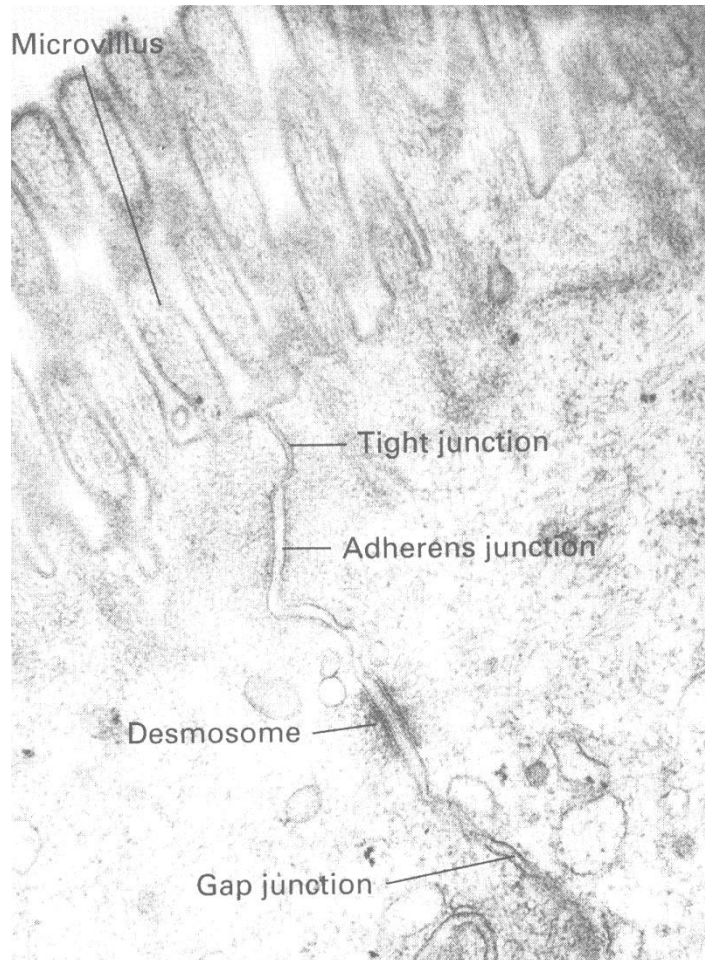


# Cell-to-Cell



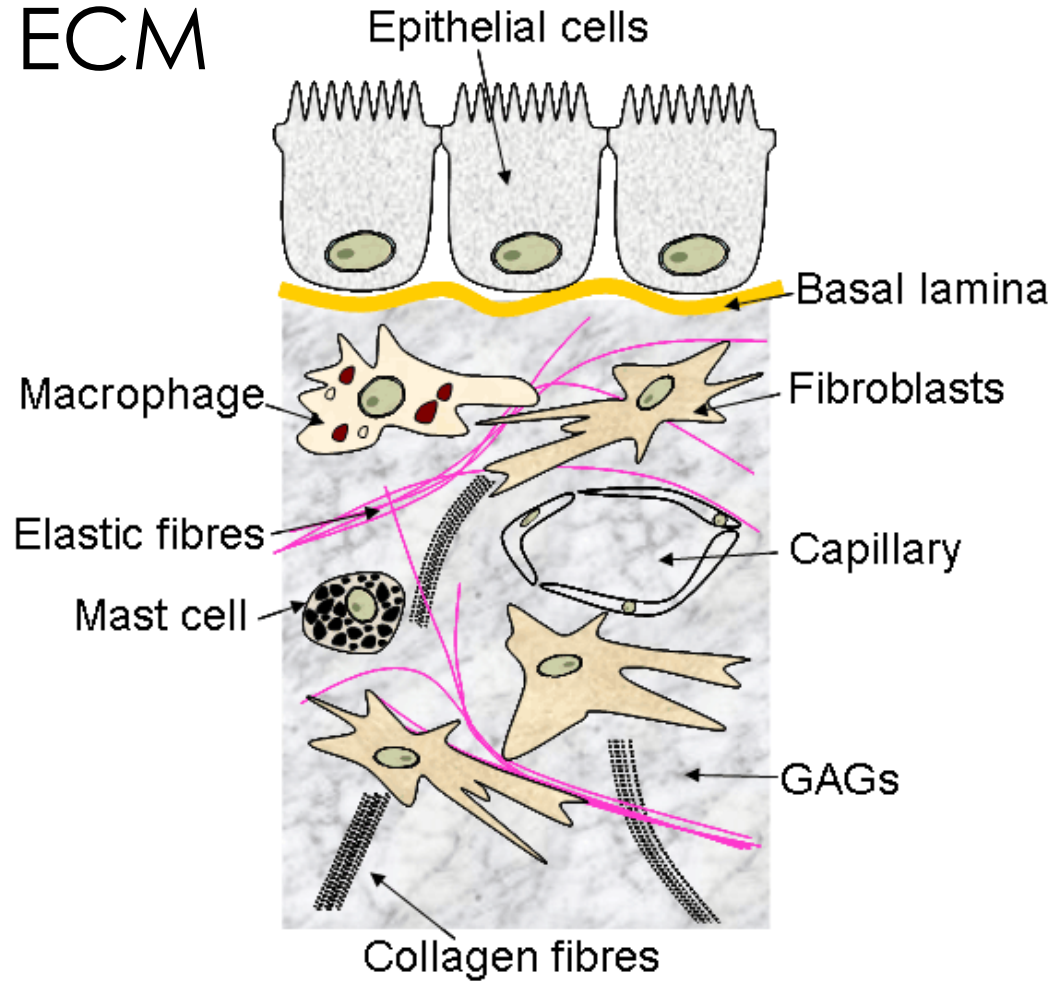
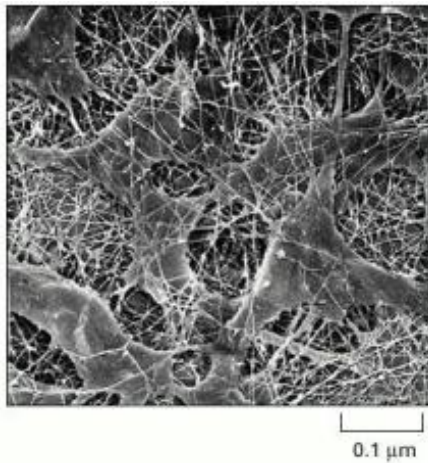
Copyright © 2001 Benjamin Cummings, an imprint of Addison Wesley Longman, Inc.

# Cell-to-Cell

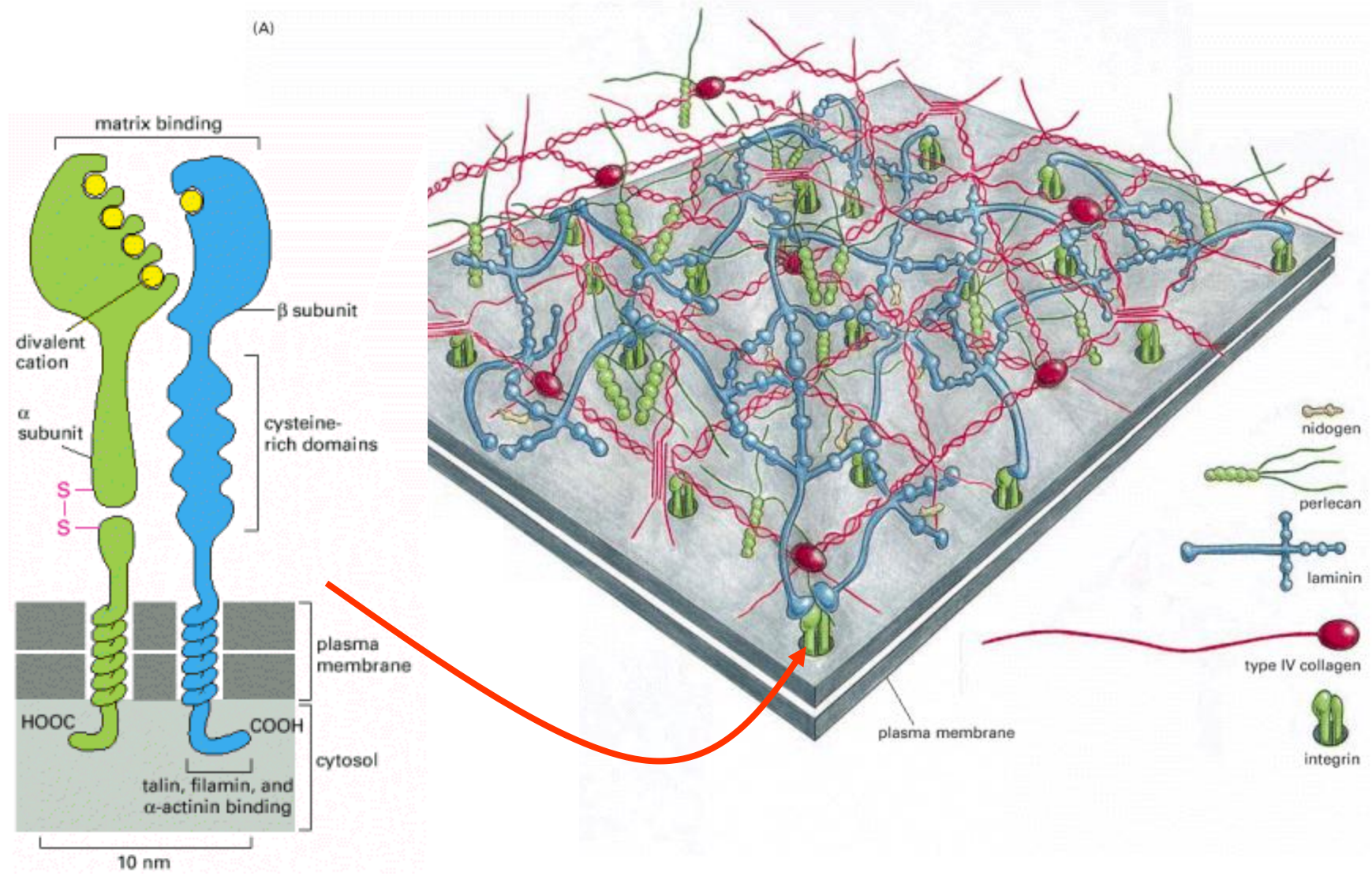


# Cell-to-ECM

- Tissue = cells + ECM

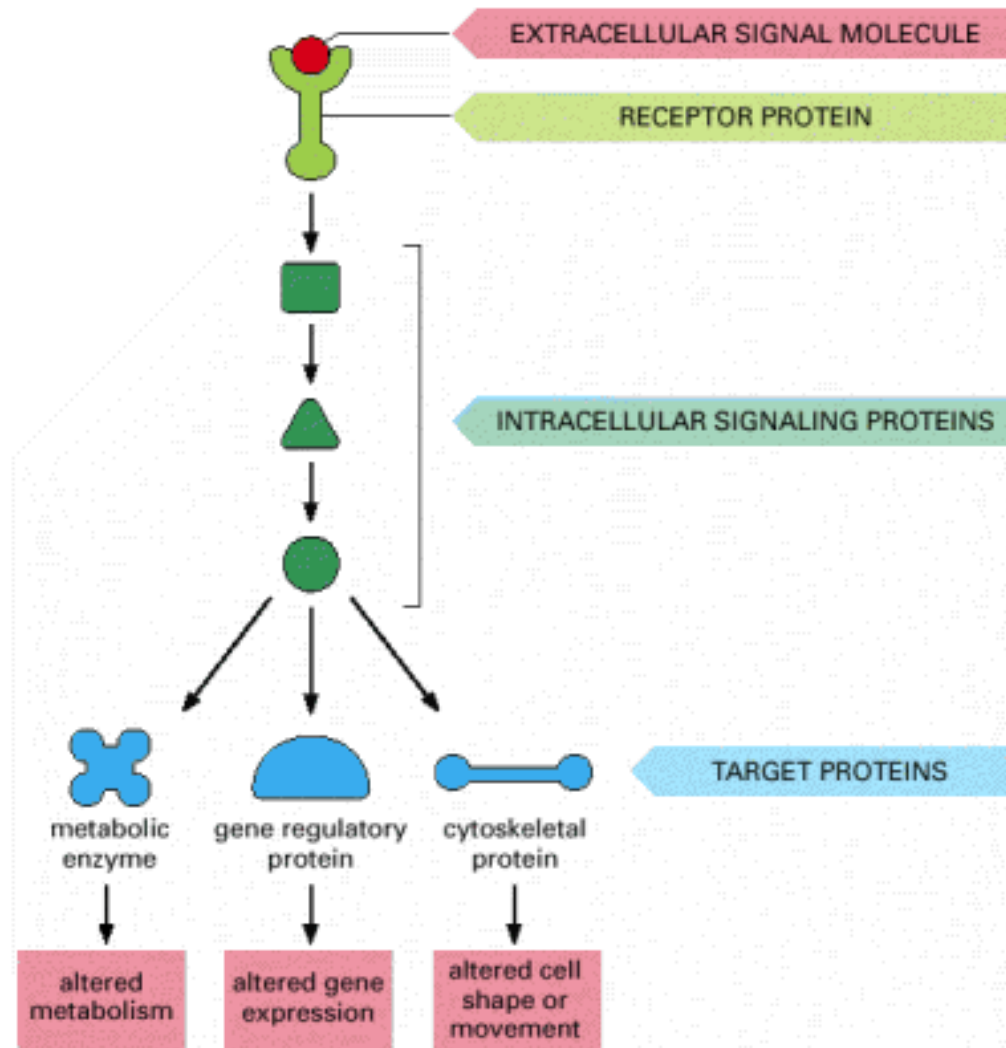


# Integrins



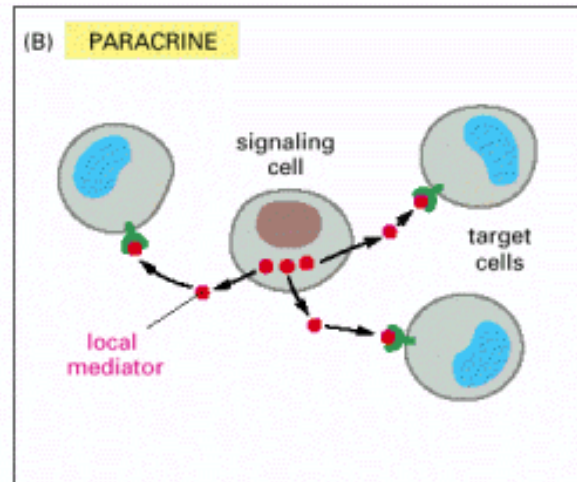
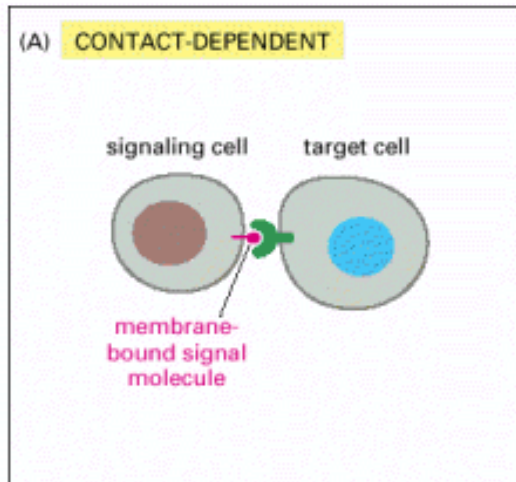


# Receptors



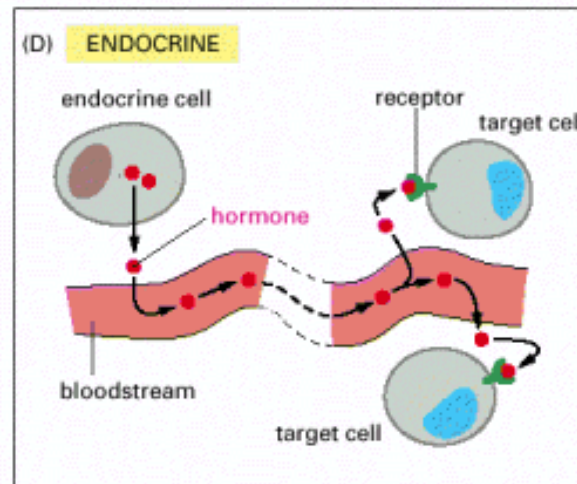
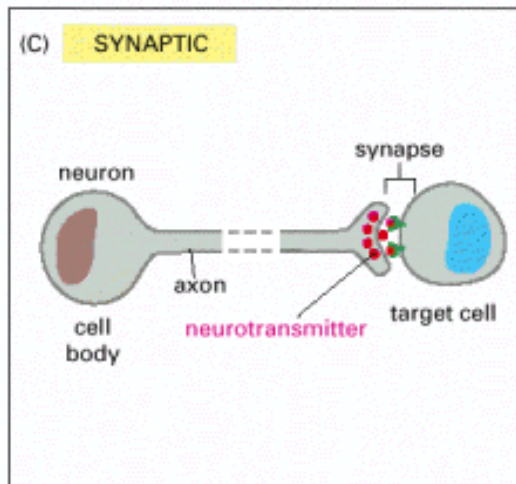
# Cell Communication

Very Local



Local

Local



Distance

Questions?