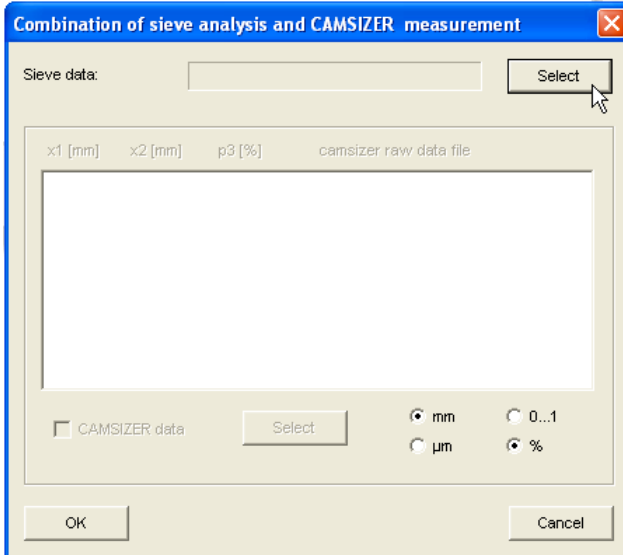


1. Combining Camsizer data with LPSA results:

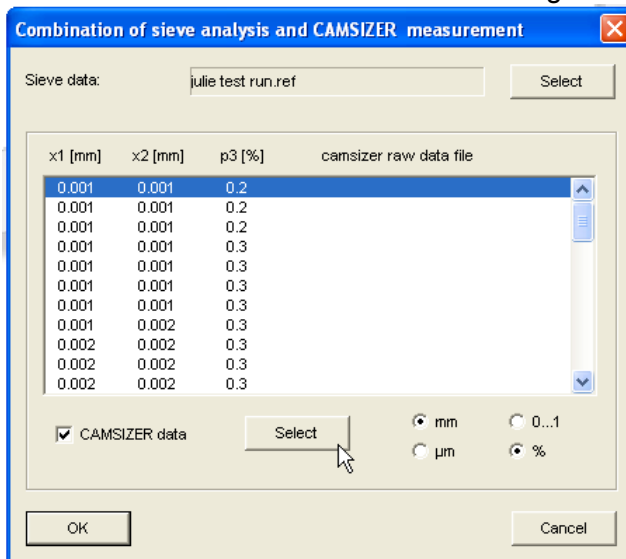
- Export your LPSA results.
- To Import data to Camsizer – Option → Input Reference Distribution → Update → Ok → Save. If you have same Q3(x) or 1-Q3(x) values, the software will prompt you to remove repeats by showing the following message:



- To combine – Results → Combination of Sieve Analysis and CAMSIZER Measurements.
- Select the newly saved file from Input Reference Distribution



- Check CAMSIZER data → Select matching Camsizer results → OK.



- This will display an overlay of LPSA and the combined. You can also check the combined mean, medium, and other characteristics.

2. Save scale bar on images of particles falling:

We talked to our international sales manager but we currently do not have the automatic scale saving feature. You may do the following in the mean time:

- Print screen and paste in appropriate software.
- Download ScreenHunter 5.0.

3. Is it safe to clean with compressed air? Yes

4. Instruction manual in pdf: See attachment and hard copy will be sent to you soon.