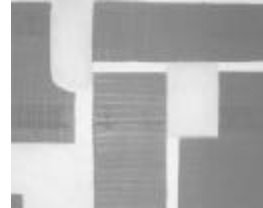
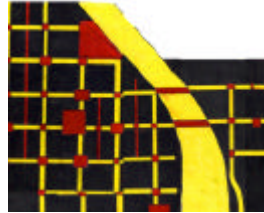
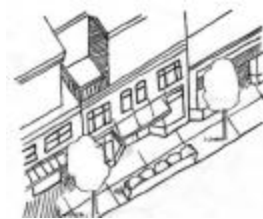
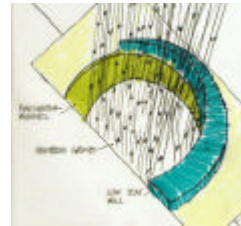


## COMMUNITY BUILDING AND PLACEMAKING: Eleven Projects for Neighborhood Revitalization in Seattle's Chinatown-International District



**Work of Community Design Studio**  
Department of Landscape Architecture,  
University of Washington, Spring 2002

Edited by Jeffrey Hou and Michael Horner

**COMMUNITY BUILDING & PLACEMAKING:**

**Eleven Projects  
for Neighborhood Revitalization in Seattle's  
Chinatown-International District**

**Edited by Jeffrey Hou and Michael Horner**

**Community Design Studio  
Department of Landscape Architecture  
University of Washington**

Instructor: Jeffrey Hou, Assistant Professor  
Graduate Students: Nathalie Abcede, Ellen Fitzsimmons, Sunny C-W. Ho,  
Kristin Kildall, Peter T-H. Lau, Trent Lloyd, Anna O'Connell,  
Carolyn Salisbury, Jan Satterthwaite, Douglas Shaw, Gretchen Stromberg

Spring 2002

# Table of Content

Acknowledgement	iii	Street as Symbolic Landscape/ Sunny C-W. Ho	4-13
<b>1. Introduction</b>	<b>1-1</b>	Go Hing Festival Alley/ Kristin Kildall	4-18
Purpose and Objectives	1-1	Urban Incubators/ Peter T-H. Lau	4-25
Unfolding of the Studio Process	1-2	Intersections as Courtyards/ Trent Lloyd	4-29
Common Ground and Contested Terrain	1-2	Jackson Street: Rethinking Urban Open Space/ Anna O'Connell	4-31
Eleven Projects vs. One Master Plan	1-3	Maynard Artisans' Alley/ Carolyn Salisbury	4-34
<b>2. Community Interviews</b>	<b>2-1</b>	Jackson Street: Engaging the Narrative Landscape/ Jan Satterthwaite	4-38
Chinatown-International District Business Improvement Area	2-3	Pattern Language for Community Self-made Design/ Douglas Shaw	4-41
Chinatown Chamber of Commerce	2-5	Alley as Living Space/ Gretchen Stromberg	4-43
Chong Wa Benevolent Association	2-7	<b>5. Design and Policy Recommendations</b>	<b>5-1</b>
Inter*Im Community Development Association	2-9		
International District Housing Alliance	2-11		
Little Saigon Business Association	2-13		
Wing Luke Asian Museum	2-15		
Analysis of Interview Findings	2-18		
<b>3. Site Analysis</b>	<b>3-1</b>		
Surrounding Context	3-2		
Traffic and Parking Conditions	3-4		
Natural Processes	3-6		
Street Conditions	3-8		
Location Pattern	3-10		
Building Conditions and Typology	3-12		
Cultural Characters	3-16		
Sacred Places	3-18		
<b>4. Design Projects</b>	<b>4-1</b>		
Urban Families Enclave/ Nathalie Abcede	4-4		
Little Saigon Urban Design Guideline/ Ellen Fitzsimmons	4-8		

## Acknowledgement

This project and its outcome would not be possible without the participation of many community members and professionals in the Chinatown-International District. We would also like to thank all those who have participated in the interviews and shared with us their views on important issues in the community. We are especially grateful to those who helped arrange the community interviews – Stella Chao of IDHA, Tom Im of Inter\*Im Community Development Association, Betty Lau of Chong Wa Benevolent Association, Tam Nguyen of the Little Saigon Business Association, May Wang of Chinatown Chamber of Commerce, Pauline Zeestraten of Chinatown-International District Business Improvement Area and the staff of Wing Luke Asian Museum. This studio was conceived through an initial contact between Kenneth Yeh and Dan Abramson that also led to a class taught by Dan in Winter 2002. Tom Im provided important community contacts and assisted throughout the course of the studio project. Doug Chin gave a lecture to the class on the history of the neighborhood and prepared us with a better understanding of the community. Bob Santos, along with Tom Im, took us on an inspiring tour of the neighborhood and shared with us their insights on many pertinent issues. Dan Abramson made a presentation on the background of architectural forms in Chinatowns in the U.S. and worked with the students in the studio. Lynne Manzo prepared the students for conducting the focus-group interviews and developed the initial list of interview questions. She also conducted two of the focus-group interviews. Members of the design team including Kenichi Nakano, Edgar Yang, Jim Yamaguchi, Nhon Truong, Nicole Kistler and Kenneth Yeh spent long hours in critiquing the students' work. Their input greatly enriched the work of the studio. Chair Iain Robertson has lent his strong support and encouragement for the project since the beginning. Joel Schwartz of the University's News and Information Office was quick to distribute press releases for the studio's final review. We would also like to thank those who participated in the final studio review, including the community/focus-group representatives, members of the design team, architects Dennis Su and Ming Zhang, Dan Abramson, and the faculty of the UW Department of Landscape Architecture – Kristina Hill, Julie Johnson, Lynne Manzo, Nancy Rottle and Daniel Winterbottom.