



## What People Really Want from Transportation Systems

Peter Muller, P.E.

TRB, 2012



- Transportation issues
- Conventional solution
- What do people really want?
  - Community workshops
  - Public surveys
- Next steps

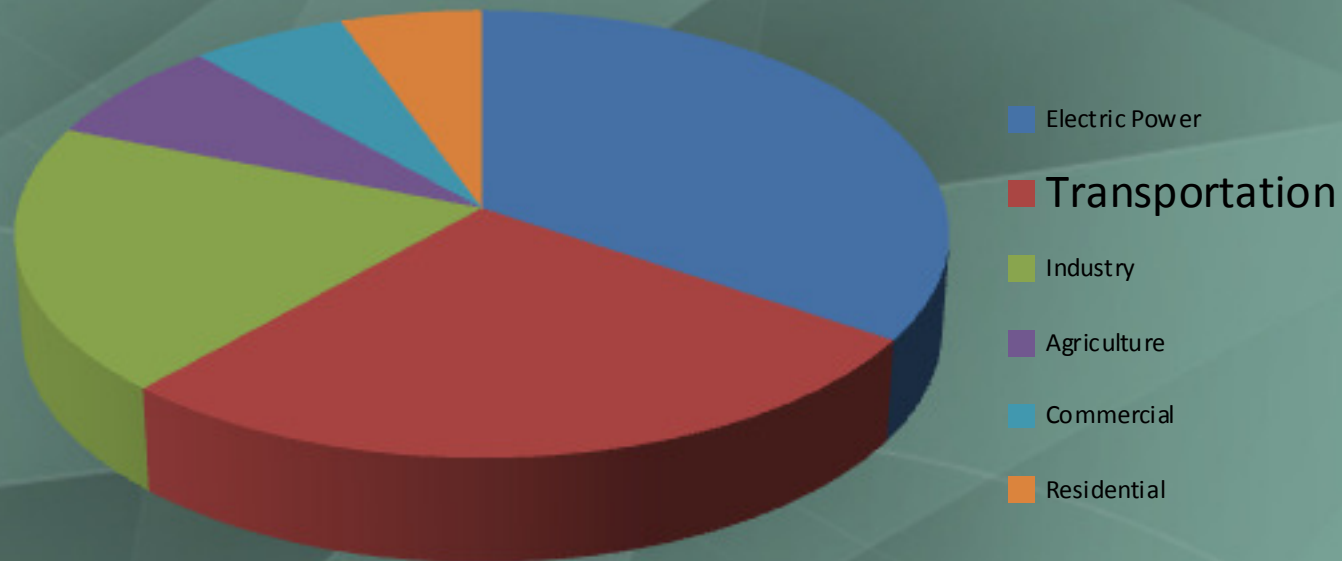


# Surface Transportation Issues









Greenhouse Gas Emissions by Sector

Source: USEPA, USDOT  
National Transportation Statistics 2009



Security hassles





Long walking distances



Unpleasant waiting conditions



- Design infrastructure improvements based on available technologies
- Accept that transportation must be heavily subsidized
  - Business case is ignored
- Present to public in “workshop” format designed to
  - Inform about the solution
  - Divide and conquer any opposition

# What Do People Really Want?

- Planners focus on costs
  - Dollars
  - Time
- And mode factors which attempt to account for
  - Comfort
  - Reliability
  - Privacy
  - Etc.
- But what do people really want?



- 20 – 50 Participants
- Choose characteristics
- Vote on characteristics (weight)

# Characteristic Weights

**Travel Preference Survey Question:**

Please vote on which of the following transportation characteristics are most important to you for Post-related trips. You have a total of 100 votes. You may not use more than 25 votes on any one characteristic. Ordered from most to least important.

Ordered Travel Preference Survey Analysis Results

Reliable	13.22	Highest Priority
Flexible Departure and Arrival	10.22	
Low Cost	9.50	
Easy to Use	9.22	
Short Walking Distance	7.72	
Short Waiting Time	7.61	
Energy Efficient	6.72	
Short Travel Time	6.39	
Low Emissions	4.56	
No transfers	4.39	
Consistent Travel Time	4.17	
Safe	3.72	
Comfortable	3.44	
Visually Appealing	2.67	
Seated Travel	2.28	
ADA Compliant (disabled persons access)	1.94	
Personally Secure	1.94	
Private	0.28	Lowest Priority
Total	100.00	
Median	4.47	
Mean (Average)	5.56	
Average Deviation	2.91	
Standard Deviation	3.48	



Reliable	13.22	Highest Priority
Flexible Departure and Arrival	10.22	
Low Cost	9.50	
Easy to Use	9.22	
Short Walking Distance	7.72	
Short Waiting Time	7.61	
Energy Efficient	6.72	
Short Travel Time	6.39	
Low Emissions	4.56	
No transfers	4.39	
Consistent Travel Time	4.17	
Safe	3.72	
Comfortable	3.44	
Visually Appealing	2.67	
Seated Travel	2.28	
ADA Compliant (disabled persons access)	1.94	
Personally Secure	1.94	
Private	0.28	Lowest Priority
Total	100.00	

- Learn about modal options
- Rate each mode for each characteristic
- Rates and weights multiplied and added for total mode score



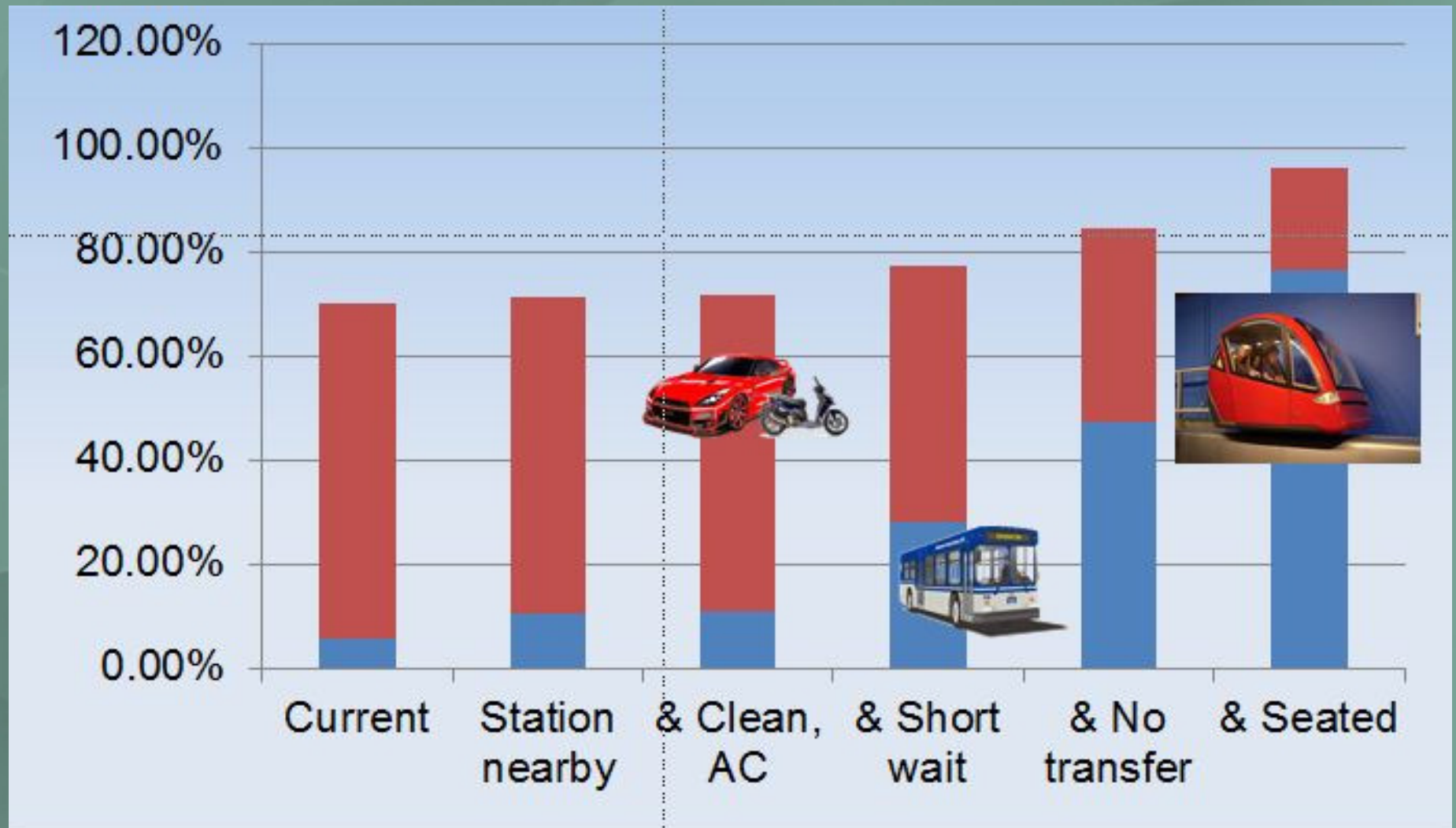
# Mode Preference

Mode Preference	
Mode	Score
Personal Rapid Transit	661 (Best)
Low Impact Vehicle	588
Car	572
Bicycle	540
Walk	532
Jitney	467
Light Rail	467
Monorail	451
Commuter Rail	451
Paratransit	443
Maglev	443
Heavy Rail	435
High Speed Rail	435
Bus Rapid Transit	403
Express / Regional Bus	387
Shuttle Bus	387
Local Bus	346 (Worst)

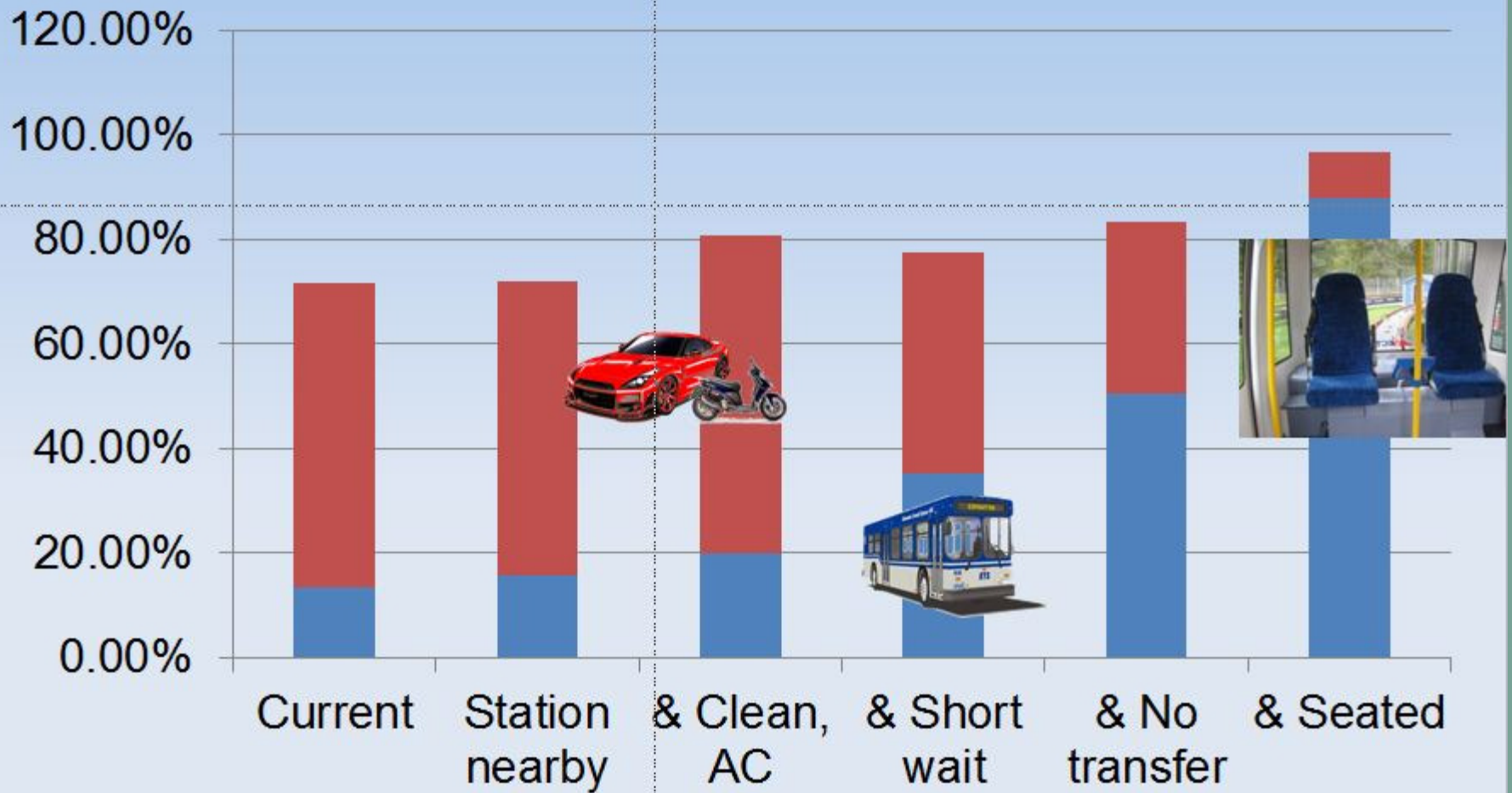
Personal Rapid Transit	661 (Best)
Low Impact Vehicle	588
Car	572
Bicycle	540
Walk	532
Jitney	467
Light Rail	467
Monorail	451
Commuter Rail	451
Paratransit	443
Maglev	443
Heavy Rail	435
High Speed Rail	435
Bus Rapid Transit	403
Express / Regional Bus	387
Shuttle Bus	387
Local Bus	346 (Worst)

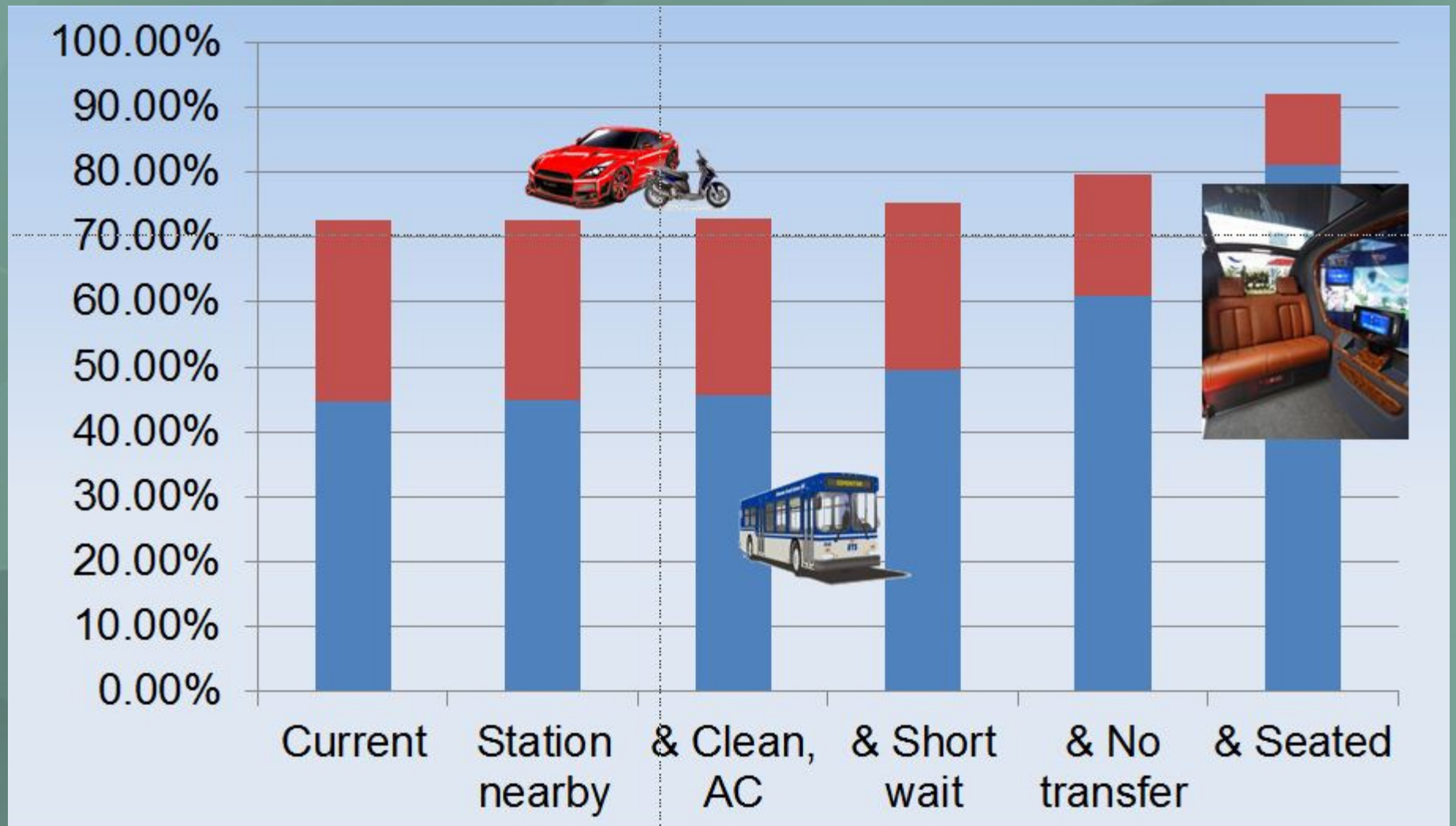


- Minimum requirements to change to transit?
  1. Stations always nearby
  2. 1. & vehicles clean and air-conditioned
  3. 2. & waiting time less than 5 min
  4. 3. & direct connection
  5. 4. & always seated

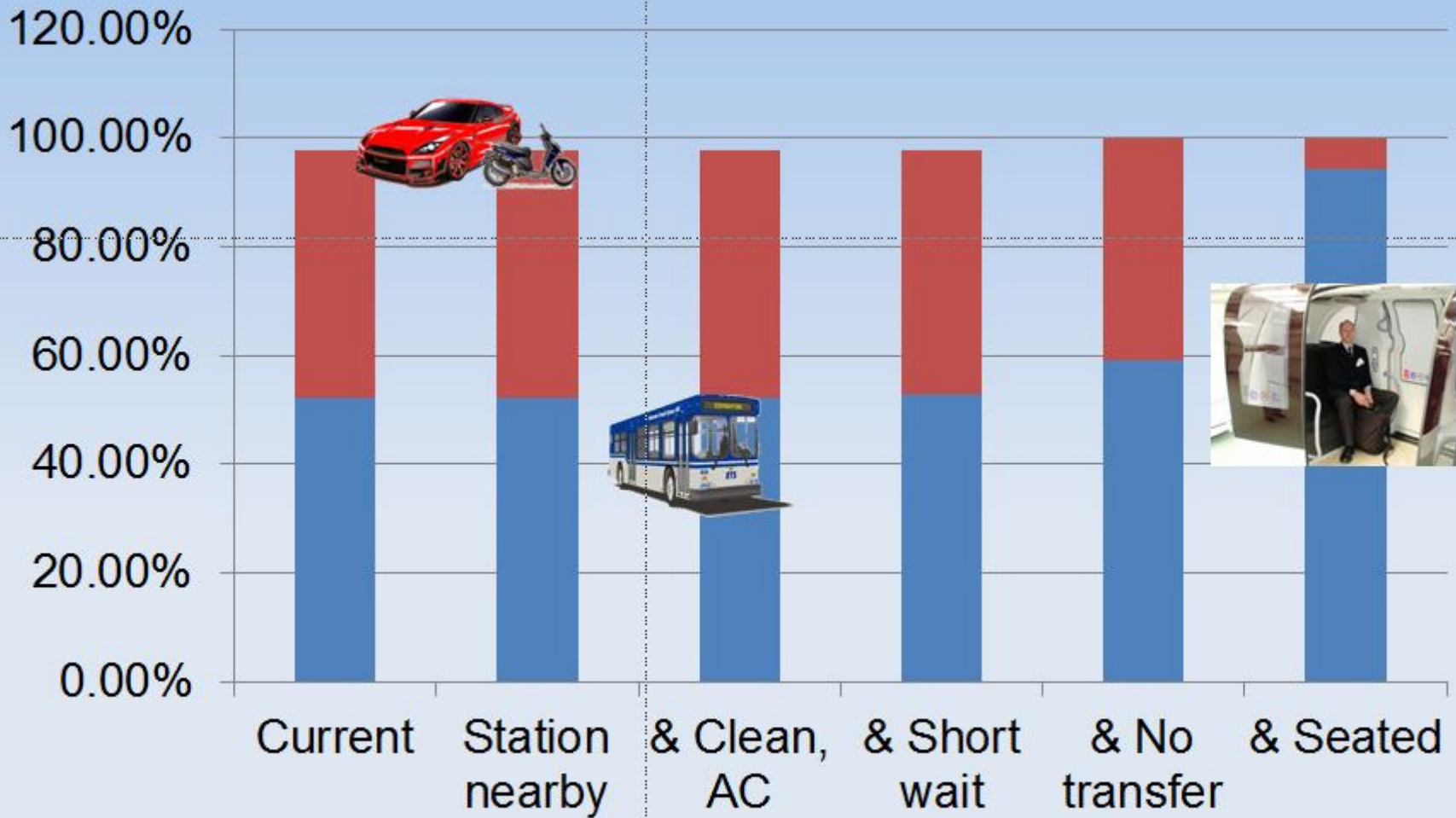




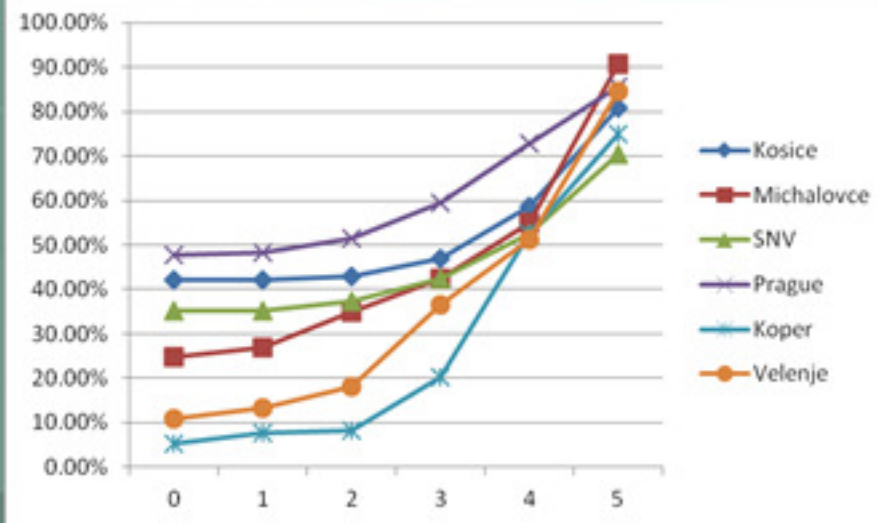




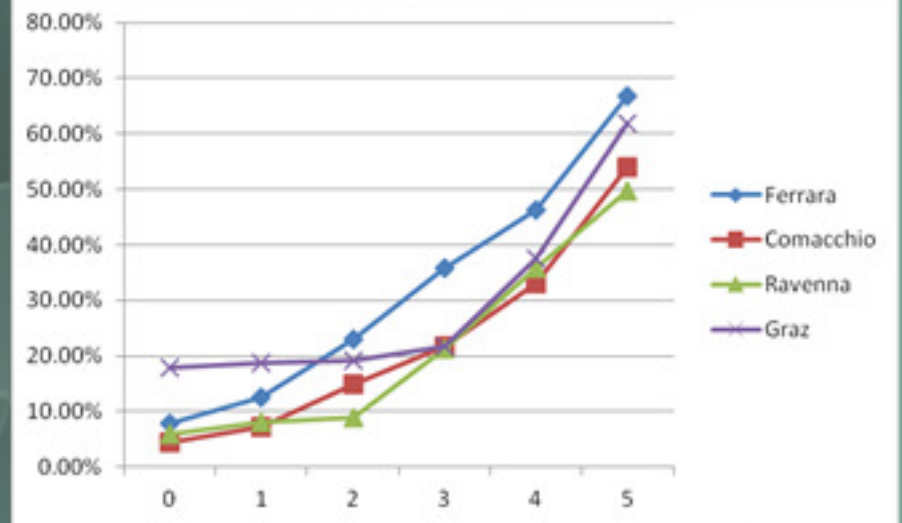




## East European Cities



## West European Cities





- City-wide network assumed to exist
- Sample not representative
- Cost factors not well accounted for
- People do not always do what they say they will

- Implement a more comprehensive study
  - Community workshops
  - Public surveys
  - Web-based surveys
  - Integrated documentation of results
- Funding partially committed from Sweden and the U.S. Both governments are anticipated to contribute



Peter Muller  
PRT Consulting, Inc.  
1340 Deerpath Trail, Ste 200  
Franktown, CO 80116  
Ph: 303-532-1855  
Cell: 720-318-4795  
Fax: (303) 309-1913  
[pmuller@prtconsulting.com](mailto:pmuller@prtconsulting.com)  
[Joerg.schweizer@unibo.it](mailto:Joerg.schweizer@unibo.it)

For more information on this topic email the authors or visit

<http://www.prtconsulting.com/outreach.html>