

Sight Reading Sequence Multipart

GOAL: Sight-sing a simple three part piece in 4/4 with focus on do down to fa patterns. Challenging alto part.

OBJECTIVES:

- 1) The students will be able to chant basic rhythm patterns containing quarter, half & whole notes and descending lines in A and B parts.
- 2) The students will be able to identify and explain the time signature, key signature and starting syllable of the exercise.
- 3) The students will be able to read a three part piece on solfege.

MATERIALS: Falling Star, solfege patterns, scale.

LESSON PROCEDURE

Rhythm Prep.

- 1) Identify the meter and have them look over the rhythm for any repeating patterns.
- 2) What beat do we start on? 1

Read rhythm on syllables ("ta-ta"). Have students tap beat, conduct, but do not "give" rhythm.

Evaluation: Did we maintain tempo? Were there spots where they stumbled? If so, then redo only that section.

Pitch Prep.

- 3)
 - For what major key would this be the key signature? G
 - How do we check to see if its major? Starting and ending note
 - What syllable begins the piece? "do"
 - Sing the scale and the triad to set the key then:
- 4) Have them scan the pitches and identify possible problems. Practice any tricky spots ahead.
- 5) Speak solfege in rhythm slowly tapping the beat. Audiating the scale notes.

Evaluation: Were there any spots where they stumbled over syllables. If so, then redo only that section.

Read

- 5) Sing an G scale and patterns including any difficult intervals from the piece.
D-t,-l,-s,-d d-t,-s,-m,-f,-m,-r,-m,-f,-d, d-t,-s,-l,-s,-f,-m, d-l,-f,-s,-d
-find "do"
- 6) Sing the piece on solfege in rhythm.
Option: piano doubling

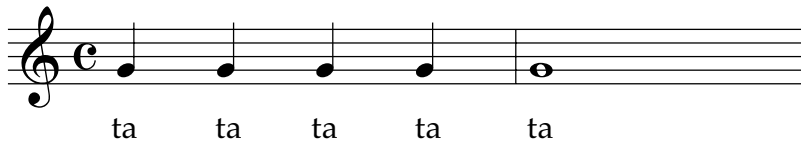
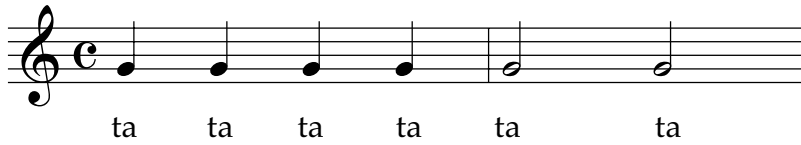
Evaluation: Listen for correct pitch/wrong solfege, or correct solfege/wrong pitch.

CLOSURE: Review starting pitch/ find "do" - sing the piece again on solfege acapella

Prenotational Sight-singing Sequence
Falling Star (1st four measures)

RHYTHM

- a. Echo clap and then speak these two rhythm patterns - they tap and echo



- b. Speak rhythm while pointing on board - they tap beat
c. read in various orders
d. Put song on overhead
Have they seen any patterns before?
Meter - tap equals ta equals beat.

PITCH

- a. Sing on la - DRMFSFMRD. Sing again on solfege.
b. Do again and point to syllables on board.
c. Sing some patterns on solfege pointing to syllables.
d. Same thing with notes on scale do the following patterns

DRMRD DRMD DRDTDR MRD

- e. Show song on overhead
-first pitch is do
-sing on solfege out of rhythm
-review rhythm ta-ti

COMBINE

- read slowly on solfege in rhythm tapping beat.