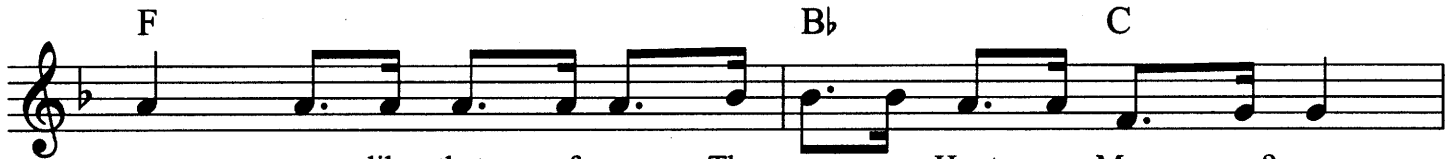


Vestigial Organ

by Greg Crowther



1. Is your brain__ a ves - ti - gi - al or - gan, __
2. Why__ do we__ have an ap - pen - dix?__
3. What is__ a__ u - vu - la for?__ I've



un - like that of__ Tho - mas Hunt__ Mor - gan?__
It's__ just__ an in - tes - tin - al dead end;__ it's
thought and__ thought, but I'm still__ not__ sure. __



Is your brain__ a ves - ti - gi - al__ or - gan__ now?__
quite__ use - less, __ that ver - mi - form ap - pen - dix, __ now?__
What is__ a u - vu - la for__ an - y - way?__



—
—
—

Why's my bo - dy all__
What good__ are those__
Is your brain__ a ves -

B \flat C F

co - vered with hair? _____ You can shave it off, _____ and
 teeth that come in late _____ when the mouth _____ is _____ full _____ with _____ the
 ti - gi - al or - gan? _____ One _____ bil - lion neur - ons, _____ and

B \flat C F

I _____ won't _____ care. _____ I can stay _____ warm e - ven
 oth - er twen - ty - eight? _____ Is - n't it _____ dumb for _____
 they're _____ all _____ snor - in'. _____ Is your brain _____ a ves -

B \flat C F

To CODA (last verse)

B \flat C

when _____ it's not _____ there. _____ We
 us to have wis - dom _____ teeth? _____ "Sur
 ti - gi - al or - gan _____ now? _____

F C B \flat C

all _____ get _____ sad - dled with our an - ces - tors' traits;
 vi - val of the fit - test" _____ was Dar - win's point of view, but e - vo -

F C B \flat C

most re - main im - por - tant, but some de - ge - ner ate....
 lu - tion is not per - fect, and ne - i - ther are you....

CODA

B \flat C F

Is your brain_ a ves -

B \flat C F

ti - gi - al or_ - gan?_ One bil - lion neur - ons,_ and

B \flat C F

they're all snor - in'_ Is your brain_ a ves -

B \flat C F

ti - gi - al or - gan_ now?_

B \flat C F

Is your brain a ves -

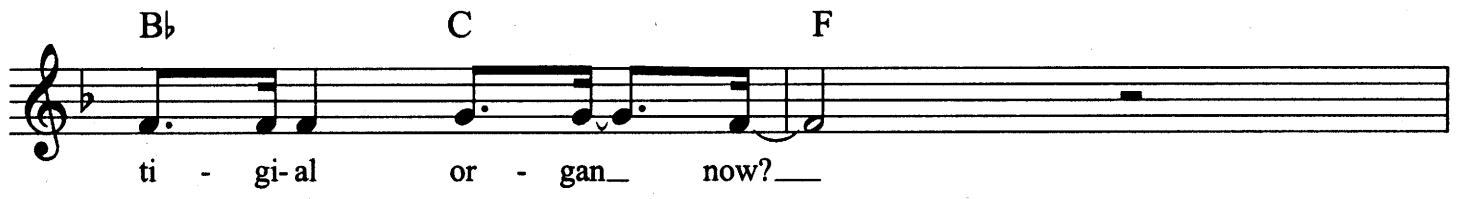
B \flat C F

ti - gi - al or_ - gan?_ You're a few keys

B \flat C F

short of an or - gan._ Is your brain a ves -

B \flat C F



ti - gi-al or - gan_ now?_

Detailed description: This block contains the first line of a musical score. It features a treble clef and a key signature of one flat (B-flat). The melody consists of a dotted quarter note on G4, followed by an eighth note on A4, another eighth note on G4, a dotted quarter note on F4, an eighth note on E4, another eighth note on D4, a dotted quarter note on C4, and a final quarter note on C4. The lyrics 'ti - gi-al or - gan_ now?_' are aligned with the notes. Above the staff, the chords B-flat, C, and F are indicated for the first, second, and third measures respectively.

B \flat C F



Detailed description: This block contains the second line of a musical score. It features a treble clef and a key signature of one flat (B-flat). The staff contains a whole rest in the first measure, a double bar line, and another whole rest in the second measure. Above the staff, the chords B-flat, C, and F are indicated for the first, second, and third measures respectively.