

Mitosis

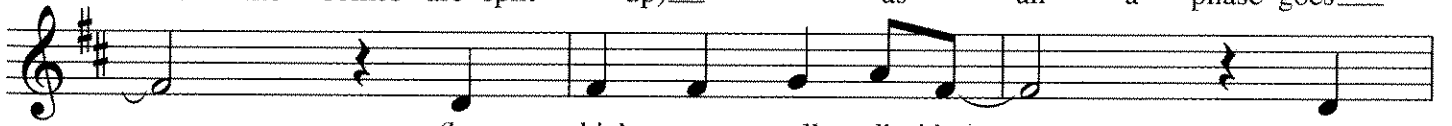
by Greg Crowther



1. Mi - to - sis is a pro - cess (mi -
pro - phase is the first phase (now
chro - mo - somes are split up (the



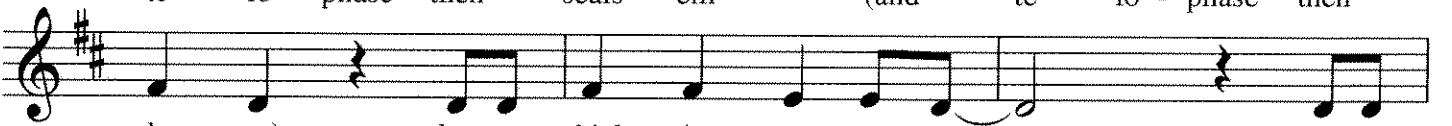
to - sis is a pro - cess) by which a cell di - vides
pro - phase is the first phase); the chro - mo - somes ap - pear
chro - mo - somes are split up) as an - a - phase goes



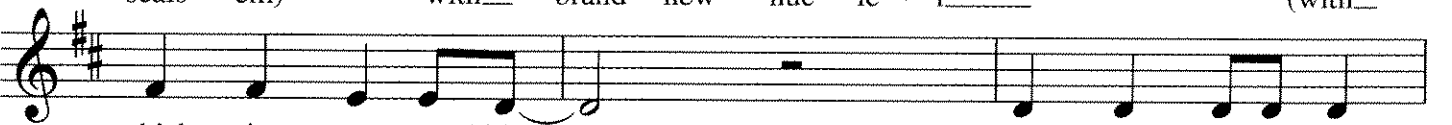
(by which a cell di - vides), a
(the chro - mo - somes ap - pear). In
by (as an - a - phase goes by), and



se - quence of four pha - ses (a se - quence of four
me - ta - phase, they line up (in me - ta - phase, they
te - lo - phase then seals 'em (and te - lo - phase then



pha - ses) by which it must a - bide (by
line up) at the mid - dle of the sphere (at the
seals 'em) with brand - new nuc - le - i (with



which it must a - bide). Pro - phase, me - ta - phase,
mid - dle of the sphere).
brand - new nuc - le - i).

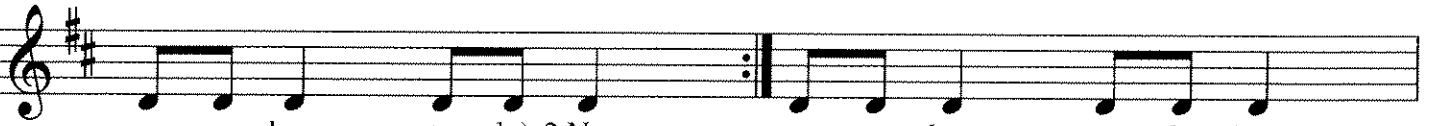


an - a - phase, te - lo - phase. (Pro - phase, me - ta - phase, an - a - phase, te - lo - phase.)



Pro - phase, me - ta - phase, an - a - phase, te - lo - phase. (Pro - phase, me - ta - phase,

1,2. 3.



an - a - phase, te - lo) 2.Now
3.The an - a - phase te - lo phase.