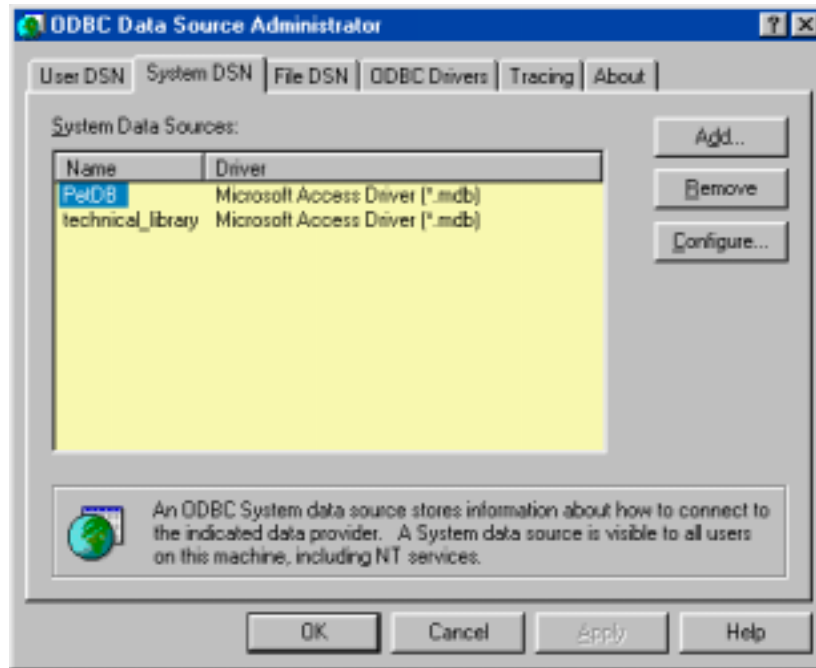
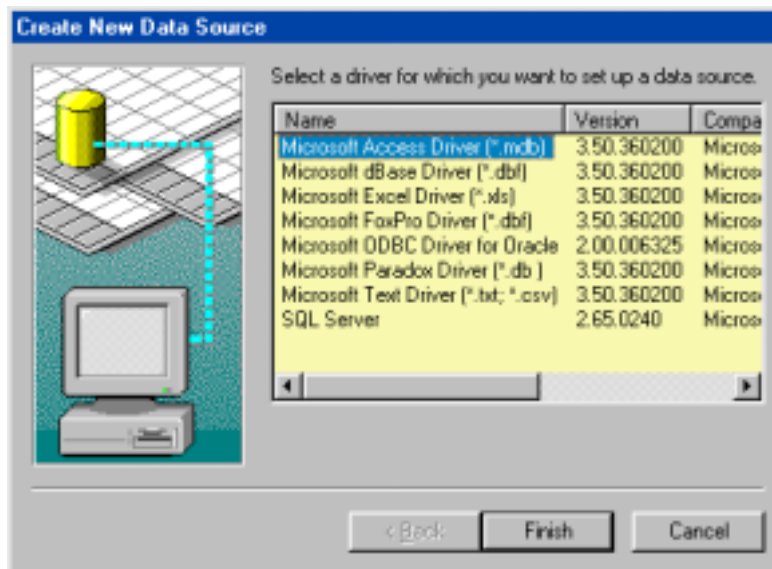


## Setting Up an ODBC Data Source

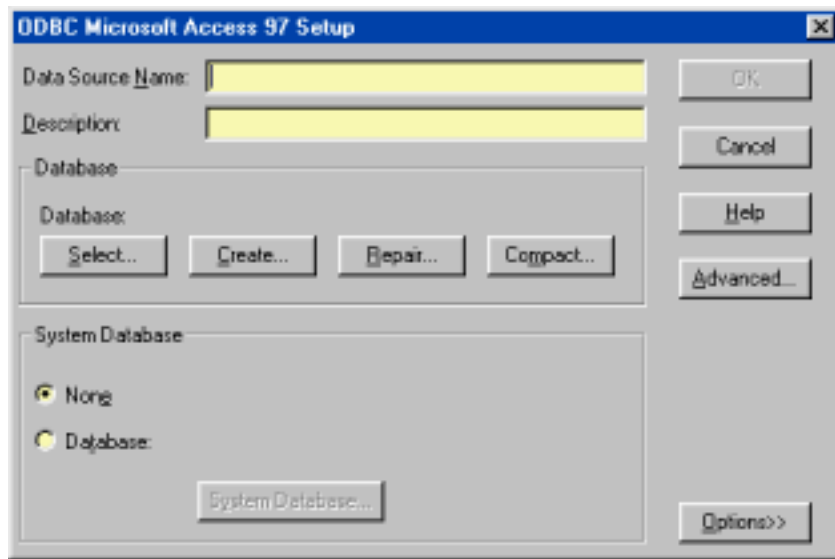
1. Open the 32bit ODBC Control Panel and select the “System DSN” tab. Click on the “Add...” button.



2. Select the Microsoft Access Driver and click on the “Finish” button



3. Click on **Select...** to find your specific Access database.



4. Fill in the **Data Source Name** text box. This will be the data source used as the `SourceURL` in the `getConnection` method.
5. Fill in a meaningful description.
6. Click **OK** and then leave the control panel.