

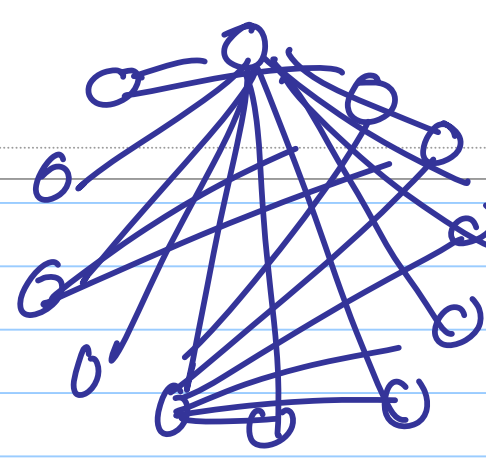
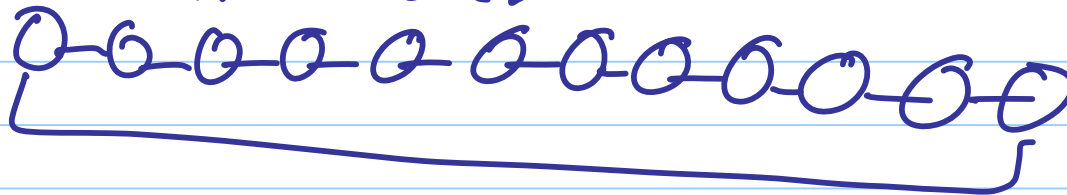
Lesson 04

Note Title

4/10/2008

Pop quiz

$n = 12$ nodes



min 11 connections

max 66 connections

$$\frac{n(n-1)}{2} = 66$$

- 11
- 10
- 9
- 8
- 7
- 6
- 5
- 4
- 3
- 2
- 1

- 66

WAN

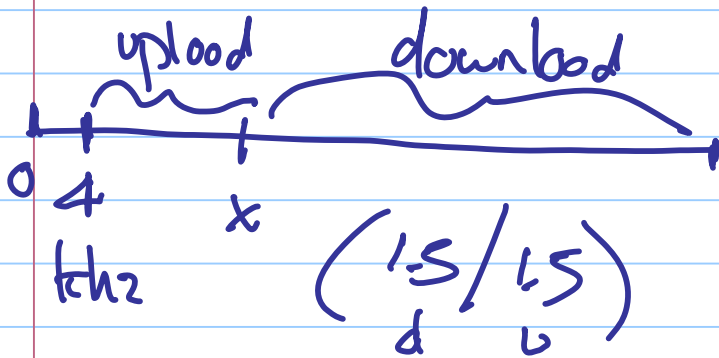
ISP

speed tests {
speak easy
dsl reports
road runner

DSL
qwest

Cable
comcast

wireless
cleanix

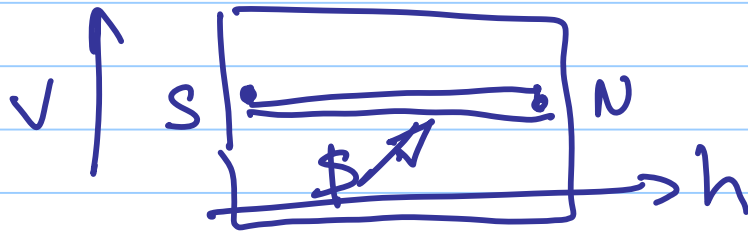
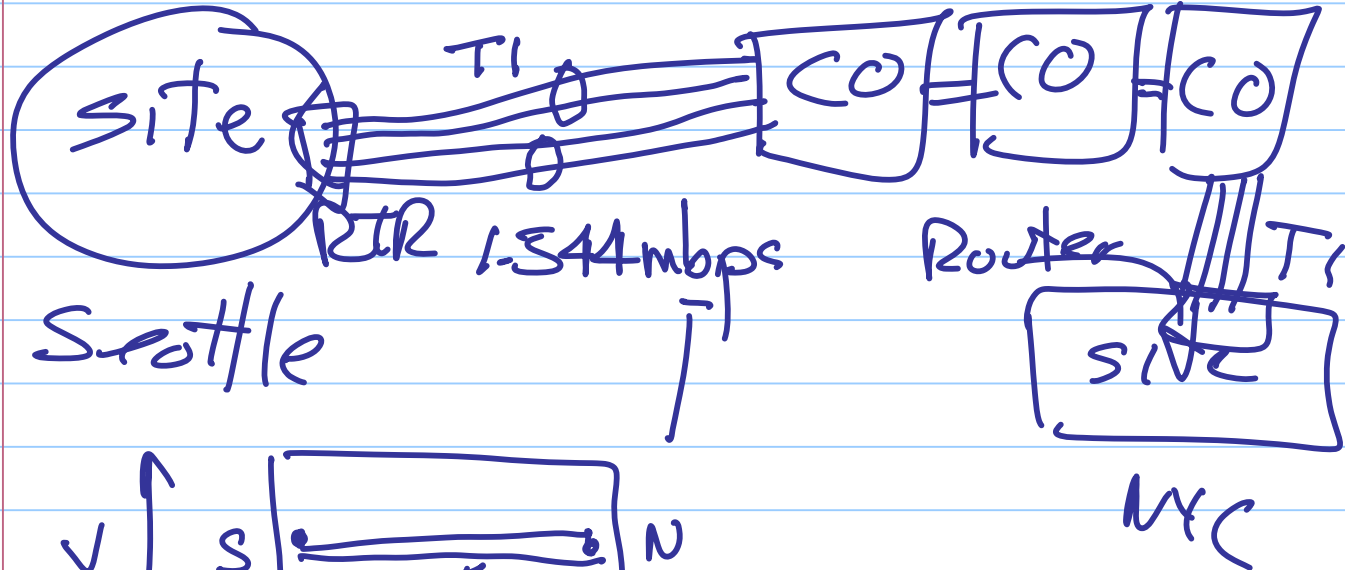


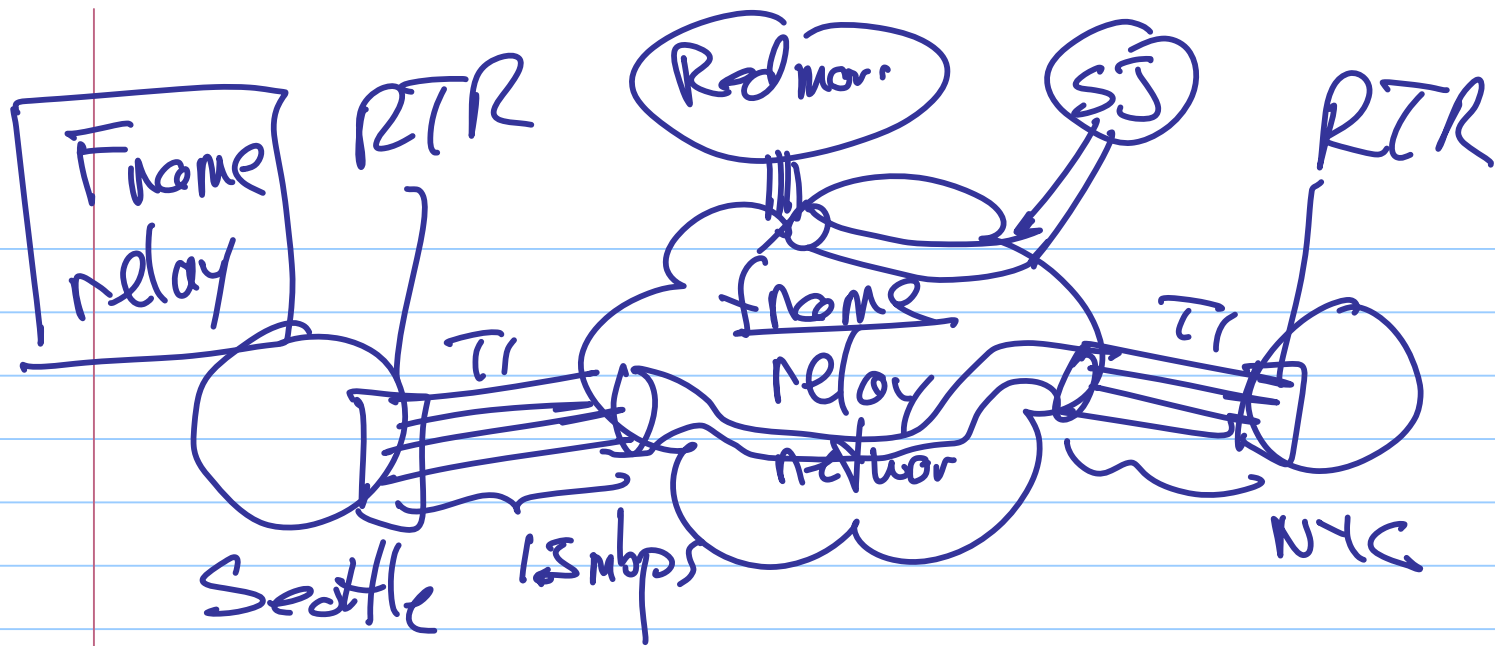
(10 1)
d u

(15/15)
d u

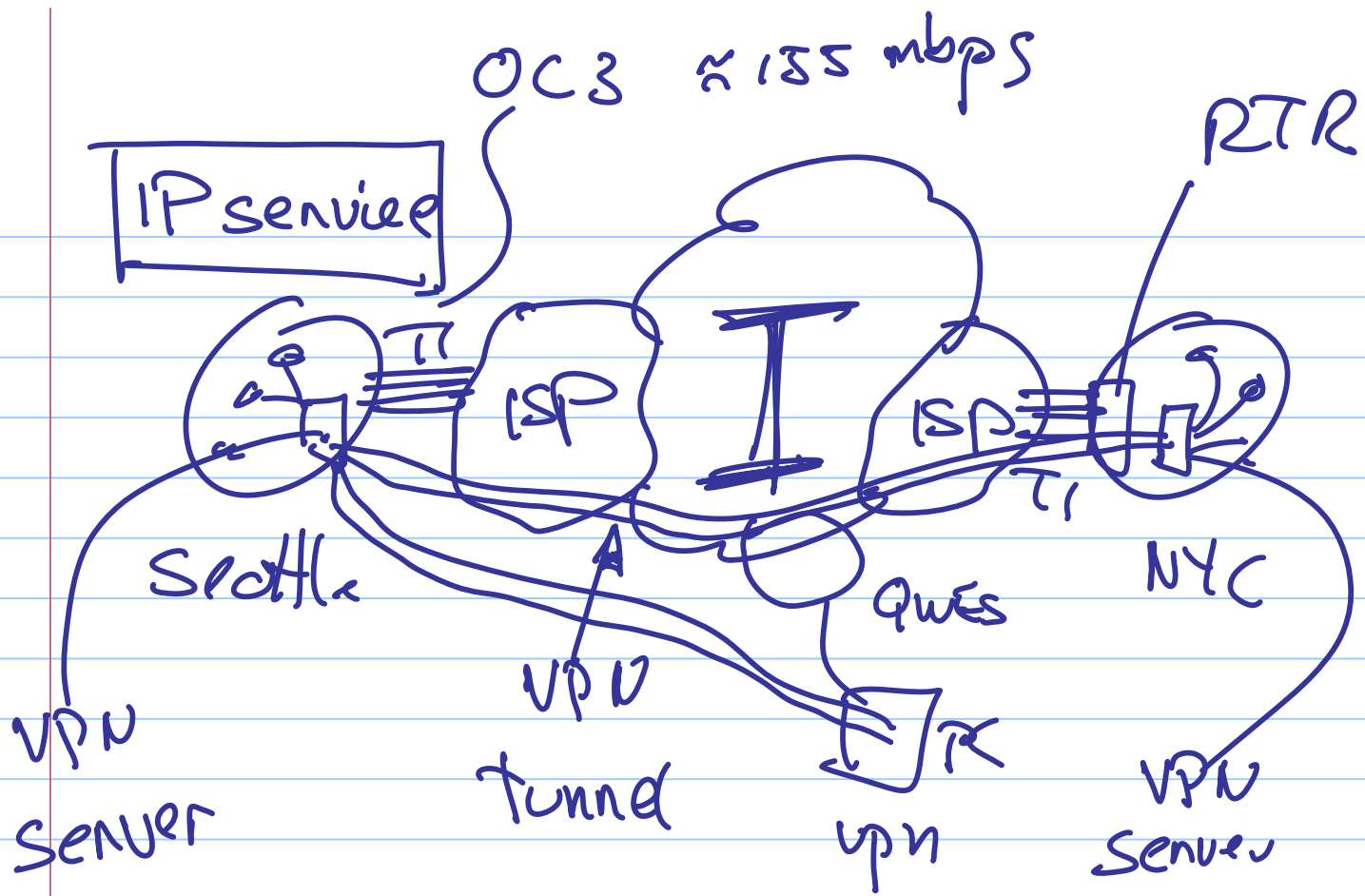
TI
WAN trusted pair

nailed connections

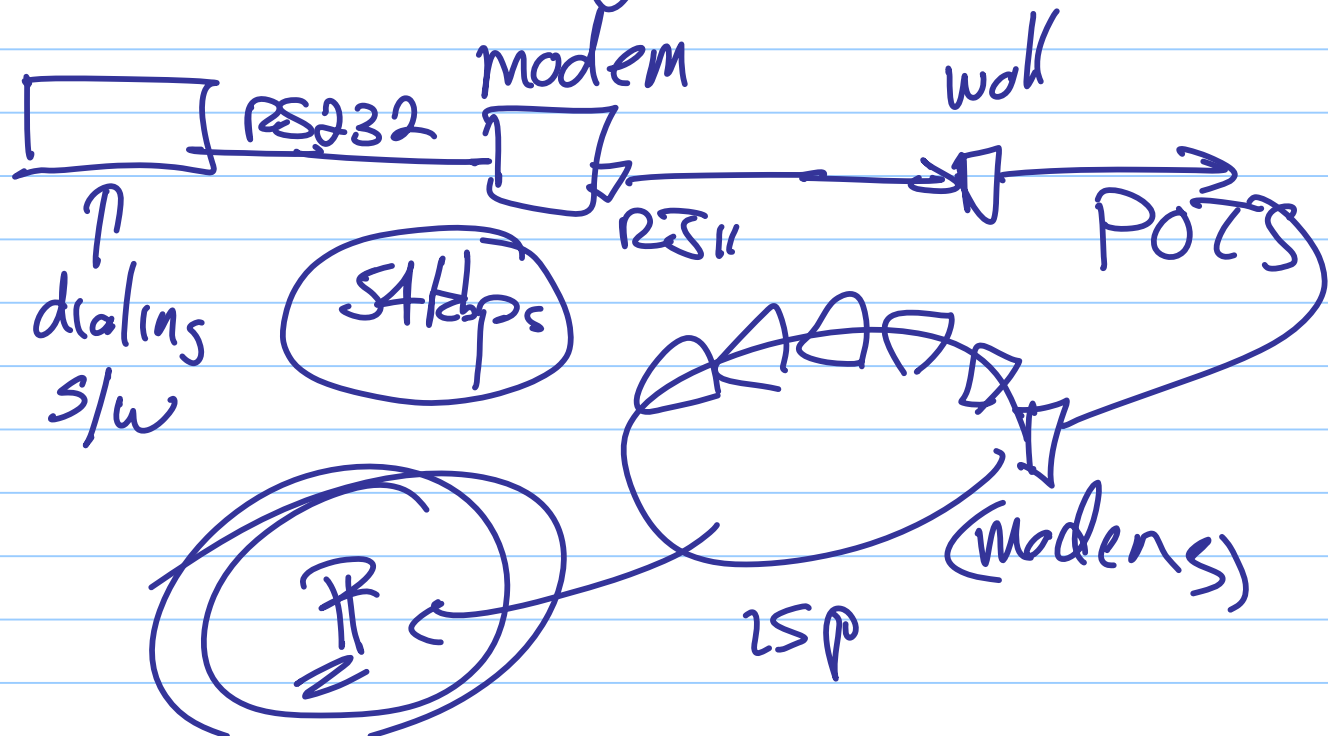




$$(256 \text{ Mbps}) = C \cdot I \cdot R = \$$$



home networking



have nets 2

