

Some Observations About The College of Forest Resources

B. Bruce Bare
College of Forest Resources
University of Washington
Seattle, WA 98195

October 29, 2001

Topics for Tonight

- Recent history, enrollments, curriculum
- Strategic thinking
- Key concept: Sustainability
- Organizational culture
- Development activities

College Is On The Move

- Recent history -- Merrill Hall fire, Acting Dean and faculty/staff changes.
- Enrollments
- Budgets

Autumn CFR Enrollments

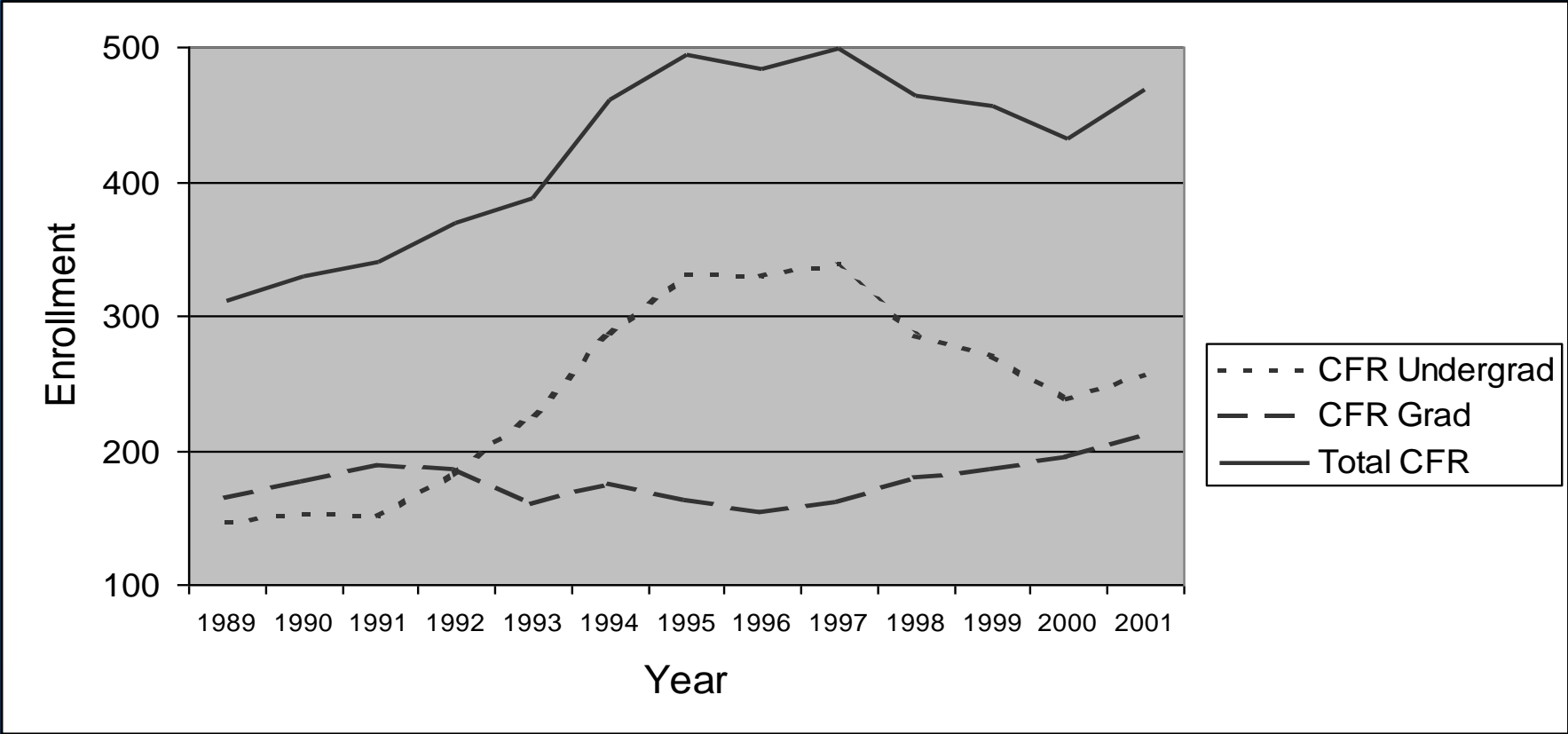
- Undergraduate: 256 students
- Graduate: 212 students
- Largest class: 1003 students
- Graduated last year: 68 students

Autumn CFR Enrollments

- **Undergraduate**

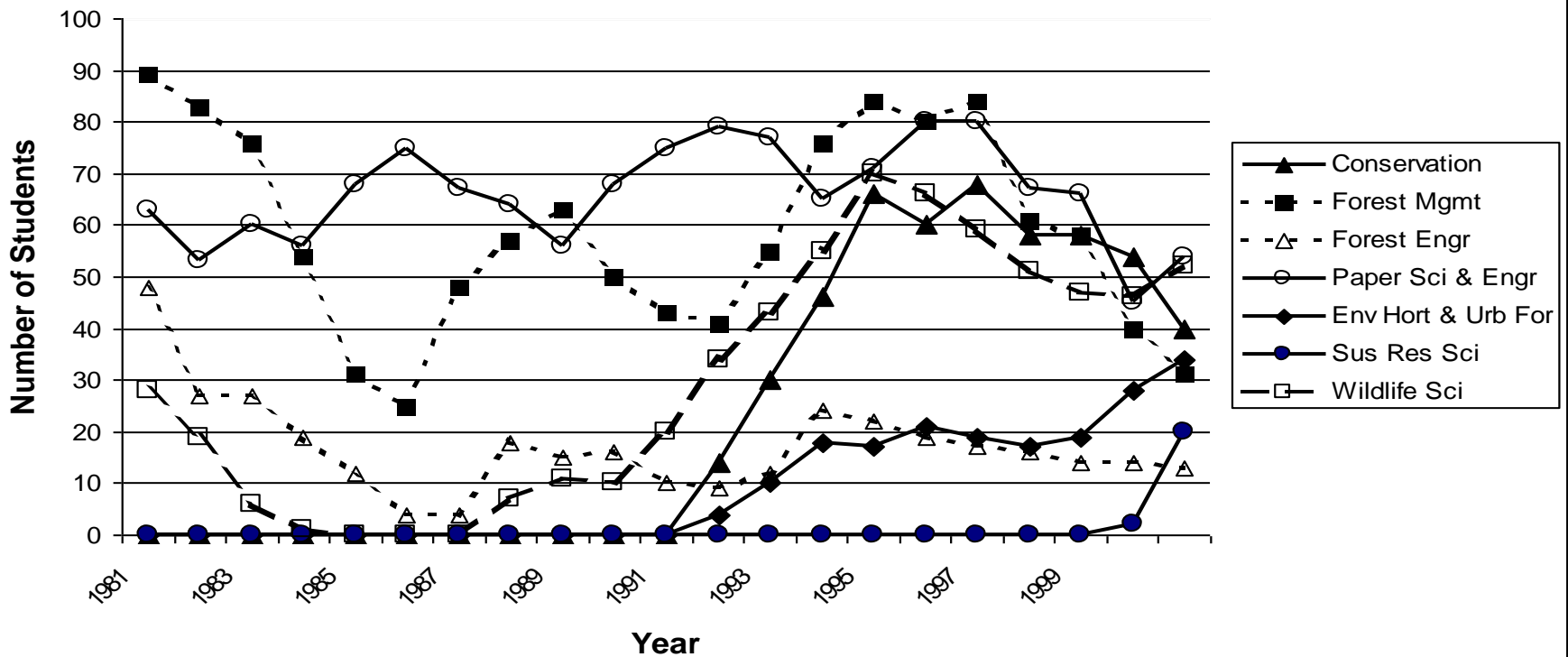
- Conservation: 40
- Forest management: 31
- Forest Engineering: 13
- Paper Science: 54
- Environmental Horticulture: 34
- Wildlife: 52
- Sustainable Resources: 20
- Pre-engr and pre-forestry: 12

CFR Enrollments



Undergraduate Enrollment

Historical Comparison of Undergrad Enrollment by Program



Budget

- On July 1, 2001 the College absorbed a 2% permanent reduction in its state budget.
- This amounted to about \$237,000 per biennium.
- Depending on the health of the State's economy we anticipate additional reductions this biennium.

Strategic Thinking

- College **Planning** Committee
- President's **Charting Directions** Committee
- CFR **Advisory** Committee

College Mission Statement

- The College of Forest Resources is dedicated to generating and disseminating knowledge for the stewardship of natural and managed environments and the use of their products and services through teaching, research, and professional and public outreach

College Vision Statement

- The College of Forest Resources will be preeminent in teaching and advancing the frontiers of knowledge in integrated resource stewardship and utilization in natural and managed environments

College Strategic Themes

- Sustainable forest enterprises
- Land and ecosystem management in an urbanizing world

Sustainability Is The Integrating Goal

- **Sustainable forestry : Managed and natural forests**
 - Plantations, parks, reserves
- **Sustainable urban environments**
 - Urban forestry, horticulture, restoration ecology, urban water, urban wildlife
- **Sustainable forest enterprises**
 - Paper mills, tourism, recycling, wood products, non-timber products

What Is Sustainability?

- To manage (including restoring and preserving), and use the products and amenities of managed forests, natural wild lands, and urban and suburban environments so that they are maintained in a productive state over the long term

What Is Sustainability?

- Rational and dynamic approach
- Guarantees continuation of a set of activities, functions or processes over a long period of time
- Uses interdisciplinary set of social, ecological and economic sciences

Sustainable Forestry

- Managing a forest to meet all existing regulations such that environmental, social and economic factors are **balanced** to meet the needs of the present without compromising the ability of future generations to meet their needs.

Sustainable Forestry

- A land stewardship ethic that integrates reforestation, growing, and harvesting trees for useful products while conserving soil, air, and water quality, wildlife and fish habitat and aesthetics, and protecting: a) the resource from fire, pests, and diseases and b) lands of special significance.

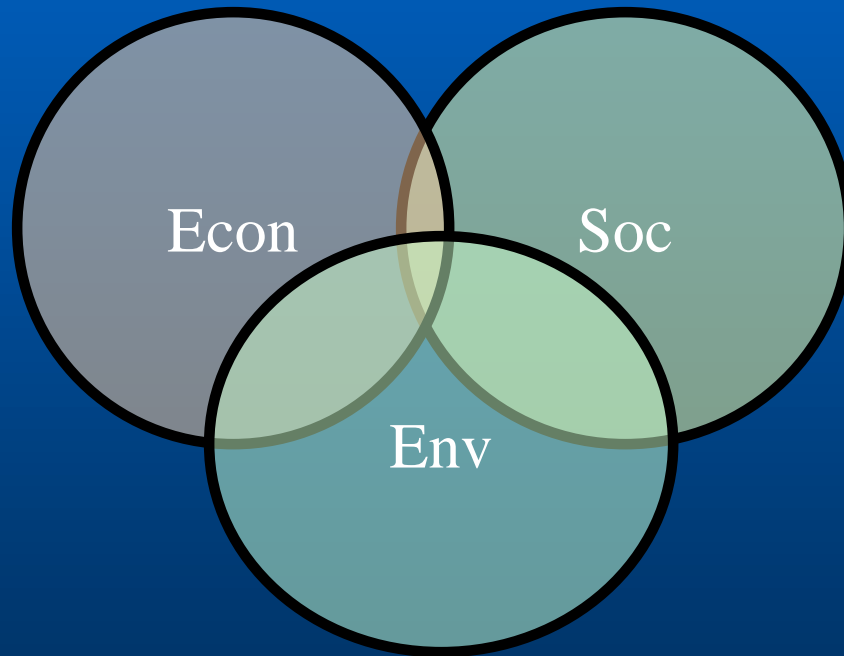
Sustainable Forestry

- **Consider key values:**
 - biodiversity
 - habitat protection and enhancement
 - riparian/wet land protection
 - protection of productive capacity
 - protection of endangered plants and animals
 - protection of cultural, spiritual, and historical sites

Sustainable Forestry

- Definition conveys the notion that sustainability applies to many resources in addition to timber; considers the needs of future generations as well as those of the present; is concerned with ecological functions and condition; and is as much a social and economic as a bio-physical process.

Sustainability Occurs at the Intersection



Observations

- The challenge to actually define and implement sustainable practices is tremendous.
- It may be the greatest challenge for educators, resource managers, scientists, and policy makers at the start of this Century.

Observations

- Our College is adopting sustainability as its key integrating concept.
- Our undergraduate and graduate programs are being redesigned to support: sustainable forestry, sustainable urban environments and sustainable enterprises.

Observations

- Considering 1 or 2 undergraduate majors for the College that support these three areas.
- Looking to build an integrated curriculum with a small number of areas of concentration for each major.

Observations

- The curriculum will have a solid core taken by all students.
- Concentration into a limited number of areas will follow in the upper division.
- A senior capstone course will involve all students in the curriculum.

Observations

- Accreditation can be attained.
- Will also re-examine our graduate program areas, College structure and the name of the College.

Organizational Culture

- All members of CFR should embrace the personal characteristics of honesty, integrity, openness, fairness and inclusiveness in dealing with the College community.
- We need to improve our working environment so that all viewpoints are respected and tolerated.

College Development Goals

- Enhance student learning opportunities.
- Promote faculty research and development activities.
- Improve College facilities and associated infrastructure.
- New programmatic initiatives to sustain urban and wild land environments.

Conclusions

- Exciting times lie ahead as we incorporate the concept of sustainability into our programs; focus our resources on our high priority programs; and respond to the challenges that lie ahead.

Conclusions

- Our goal is to position the College so that it continues to make significant contributions across an array of important areas in the years ahead.

Conclusions

- By continuing to endorse our values of consensus, integration, preeminence, respect, communication, and accountability we believe we can build an even stronger College that is more responsive to the needs of society.