

# College of Forest Resources: Strategic Vision

**B. Bruce Bare, Dean  
College of Forest Resources  
University of Washington  
Seattle, WA 98195**

**CFR Visiting Committee  
November 14, 2003**

# Purpose of Presentation

- Review recent accomplishments
- Present future directions
- Remaining challenges

# Recent Accomplishments

The image features a solid blue background. At the top center, the text "Recent Accomplishments" is written in a yellow, serif font with a subtle drop shadow. In the lower right quadrant, there is a decorative graphic consisting of five parallel, diagonal lines of varying lengths, all pointing towards the bottom right corner. The lines are a slightly darker shade of blue than the background.

# College Mission Statement

- The College of Forest Resources is dedicated to generating and disseminating knowledge for the stewardship of natural and managed environments and the sustainable use of their products and services through teaching, research, and professional and public outreach

# College Vision Statement

- The College of Forest Resources will be a world-class internationally recognized source of knowledge relevant to environmental and natural resource issues

# Strategic College Themes

- Land and ecosystem management in an urbanizing world
  - *conflicts and tradeoffs among competing human and natural resource values in the growing and urbanizing global population*
- Sustainable forest enterprises
  - *land and water resource production, use, and management, with attention to the material and social impacts of sustainable practices*

# A World Class Vision Implies

- High quality (faculty, staff, students, facilities, programs, graduates)
- High impact (at UW and in our external community)
- Specific criteria have been established to measure the attainment of world class stature

# We Desire Academic Programs

- Encompassing the functionality and sustainability of complex natural resource and environmental systems featuring
  - Interdisciplinary
  - Integrated
  - Multiple scales
  - World-class laboratory
  - Gradient from urban to rural
  - Linked to other campus programs



# Program Elements

- Self-sustaining research, outreach, and development programs are also directed at achieving world-class status
- Our research centers and cooperatives will strive to increase funding by at least 25% over two years
- Professional outreach and continuing education will continue to grow

# On-Going College Transformation

- Driven by both budget and programmatic needs:

- access

- efficiency

- enrollment targets and credit hours

- flexibility

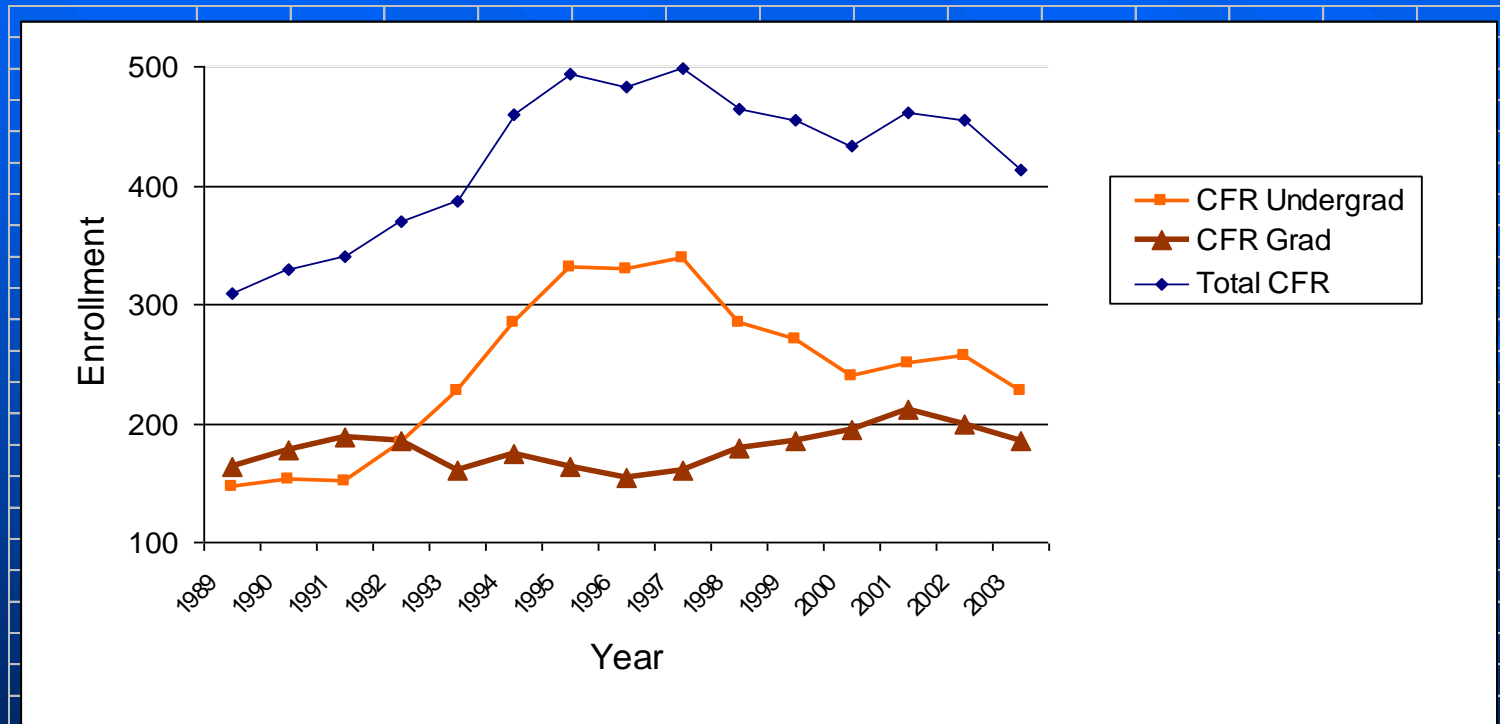
- market needs

- integration and links to UW units

BUDGET

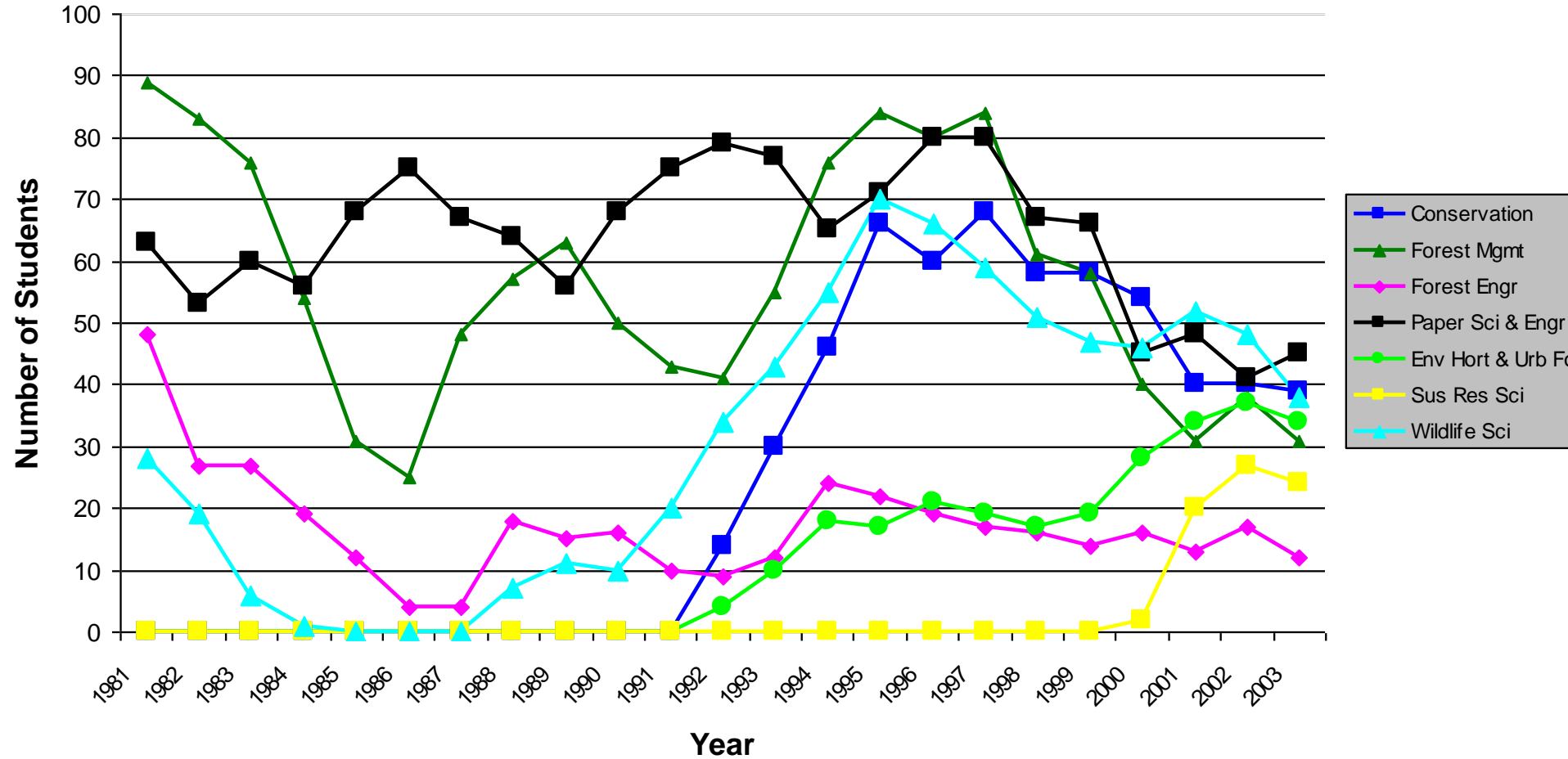
PROGRAM

# College Enrollment Trends



# College Enrollment Trends

## Historical Comparison of Undergrad Enrollment by Program



# Undergraduate Program Efficiency

- Consolidate seven undergraduate curricula into two:
  - Environmental science and resource management
  - Paper science and engineering
- Redesign core undergraduate curriculum with a foundation of collaborative teaching and research toward sustainable management and stewardship of natural resources

# Curriculum Characteristics

- The Environmental Science and Resource Management curriculum possesses:
  - flexibility in free and restricted electives
  - integrated core of ecological, social, economic and measurement subjects
  - pathways to promote specialization
- The curriculum better accommodates community college transfer students as well as UW pre-major students

# Graduate Program Efficiency

- Will offer professional masters programs in forestry, urban horticulture, etc., to provide in depth technical knowledge (accredited where appropriate) to satisfy employer needs
- MFR graduate programs linked to our four year BSF undergraduate programs provide efficiency and flexibility
- Consolidate learned degree (MS and PhD) programs to gain efficiency and integration

# Observations

- Our new integrated undergraduate curriculum in Environmental Science and Resource Management:
  - retains and improves our historic strengths in forestry and horticulture
  - improves flexibility in the curriculum allowing students to tailor their studies
  - improves integration, access and efficiency
  - provides opportunity to obtain both an MFR and BSF in five years



# Observations

- Our new integrated undergraduate curriculum in Environmental Science and Resource Management :
  - focuses specialization at the graduate-level
  - has potential to attract more students into the College
  - promotes sustainability (triple bottom line)
  - fosters team approach to natural resource education through interdisciplinary courses

# Future Directions

A decorative graphic consisting of several parallel diagonal stripes in a lighter shade of blue, extending from the bottom-left towards the top-right of the slide.

# Sustainability Is Our Integrating Goal

- Sustainable forestry in managed and natural forests
  - Plantations, parks, reserves, watersheds
- Sustainable urban environments
  - Urban forestry, horticulture, restoration ecology, water, wildlife
- Sustainable forest enterprises
  - Paper mills, precision forestry technologies, tourism, recycling, wood products, non-timber products

# College Development Goals

- Promote faculty research and development activities
- Enhance student learning opportunities
- Improve College facilities and associated infrastructure
- New initiatives to sustain urban and wild land environments
- Program support of interdisciplinary centers

# Remaining Challenges

The background of the slide features a series of parallel, diagonal stripes in a lighter shade of blue, extending from the top-left towards the bottom-right.

# Curriculum

- Final RCEP and FCAS approval (University level). Both anticipated.
- Curriculum implementation
  - Core courses – team teaching paradigm
  - Pathway definitions
- Graduate program approval and definition

# Administration

- Organizational structure revisions (on-going) All-College retreat in Sept. '03
- Setting and enforcing standards of productivity (under way)
- Better infrastructure for organization support (under way)
- Improved organizational culture to support core values (accountability, respect and open communication)

The End