

GLOBAL ADVANTAGE

Anatomic Shoulder Arthroplasty



Total shoulder arthroplasty with Global Advantage prosthesis and an eccentric humeral head.



Hemiarthroplasty with Global Advantage prosthesis.

REFERENCES

1. Iannotti, J., and T. Norris. "Functional Outcome After Shoulder Arthroplasty for Primary Osteoarthritis: A Multicenter Study." *Journal of Shoulder and Elbow Surgery*. Mar/Apr. 2002; 11:130-135
2. Matsen III, F. et al. "Humeral Fixation by Press-Fitting Of A Tapered Metaphyseal Stem." *JBJS* Feb. 2003; 304-308
3. Data on file at DePuy Orthopaedics, Inc.
4. Iannotti, J.: "Radiographic evaluation of a humeral stem designed for uncemented use.", *Data submitted as 2001 AAOS abstract*.
5. Iannotti, J. et al: "The Normal Glenohumeral Relationships." *JBJS* Apr. 1992: 491-499.

The Global Shoulder glenoid components are intended for cemented use only.

Consult the package insert for complete product information.

For more information about the Global Advantage Shoulder, visit our web site at www.jnjgateway.com/globaladvantage.



DePuy Orthopaedics, Inc.
700 Orthopaedic Drive
Warsaw, IN 46581-0988
USA
Tel: +1 (800) 366 8143
Fax: +1 (574) 267 7196

DePuy International Ltd
St Anthony's Road
Leeds LS11 8DT
England
Tel: +44 (113) 387 7800
Fax: +44 (113) 387 7890

1.5M0306
0601-68-050 (Rev. 3)

Printed in USA.
©2000 DePuy Orthopaedics, Inc. All rights reserved.

Global Advantage

SHOULDER ARTHROPLASTY SYSTEM



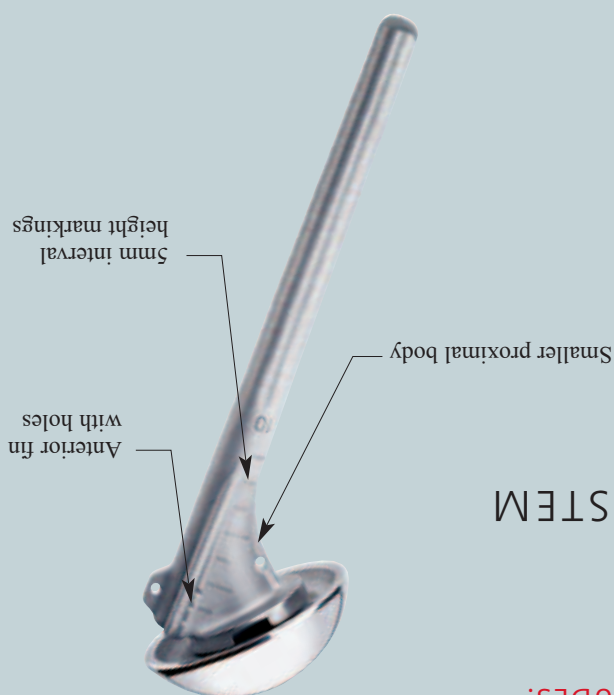
COMBINING SCIENCE,
SIMPLICITY AND
CLINICAL SUCCESS



Global FX

THE SHOULDER FRACTURE SYSTEM

THE GLOBAL SHOULDER FAMILY ALSO INCLUDES:



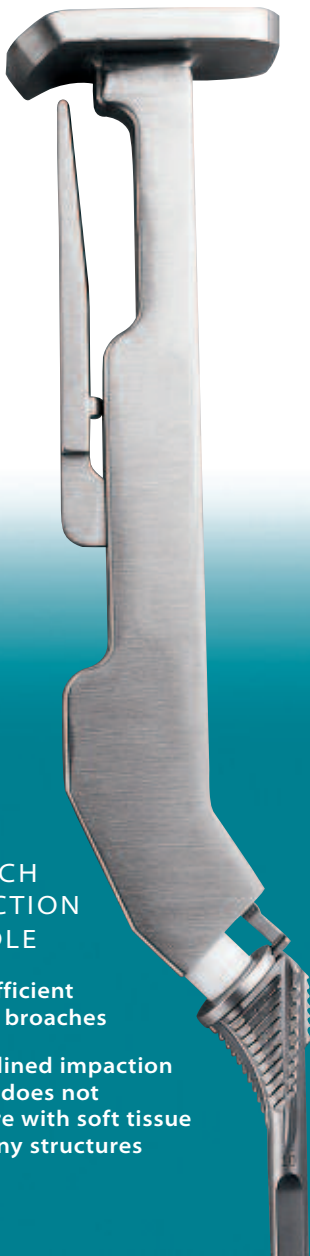
Unique positioning jig helps establish height and version

IMPROVED INSTRUMENTATION

Simple and more efficient

GLENOID REAMERS

- More efficient glenoid reaming
- Improved visualization



BROACH IMPACTION HANDLE

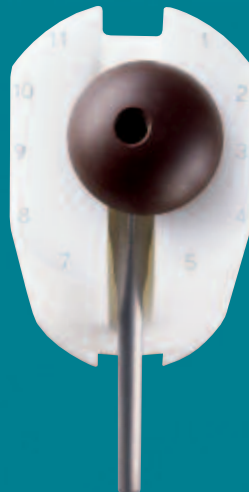
More efficient cutting broaches

Streamlined impaction handle does not interfere with soft tissue and bony structures

HUMERAL HEAD IMPACTION STAND

Helps ensure head impaction is in line with taper

Measures position of eccentric head



INTRAMEDULLARY CUTTING GUIDE

Helps provide reproducible humeral head resection



STEM FIXATION

Proven press-fit success



The Global Advantage Shoulder features a clinically proven press-fit stem design. Unlike some stems that were originally designed to rely on cement, the Global Advantage humeral stem relies on the same anatomic, proximal-filling design as the original Global Shoulder.

Improved head position and biomechanics were derived from a comparative study of anthropometric data and cadaveric evaluation.³

STEM SIZE CHART

DIAMETER (mm)	STD. LENGTH (mm)	REV. LENGTH (mm)
6	108	—
8	133	200
10	138	210
12	145	220
14	153	220
16	160	—

“The uncemented medullary canal-fitting humeral prosthesis demonstrated no radiographic evidence of humeral stem loosening with 2-7 year follow-up.”⁴

HUMERAL HEAD OPTIONS

Anatomic head replacement



Standard Humeral Head



Eccentric Humeral Head

HUMERAL HEAD RADIUS OF CURVATURE

- Radius of curvature ranges from 19-28mm (38-56mm diameter).³
- Five diameters are available to recreate anatomical curvature:

40mm
44mm
48mm
52mm
56mm

HEAD HEIGHT

While there is a correlation between head height (thickness) and humeral head radius of curvature, variations persist. In fact, a study of 96 shoulder arthroplasty cases revealed that within a given radius of curvature a number of different thicknesses exist.⁵

In order to replicate natural anatomy, the Global Advantage System provides three standard head height options for each head diameter:

15mm
18mm
21mm

HEAD SIZE OPTIONS

HEAD DIAMETER (mm)	STANDARD HEAD HEIGHT OPTIONS (mm)	ECCENTRIC HEAD HEIGHT OPTIONS (mm)
40	15, 18, 21	—
44	15, 18, 21	18, 21
48	15, 18, 21	18, 21
52	15, 18, 21	18, 21
56	15, 18, 21	18, 21

STANDARD AND ECCENTRIC HEAD CAPABILITY

- Eccentric heads are not mandatory, but are an option.
- Infinitely dialable heads are not limited to preset positions.
- Standard heads have three height options.
- Eccentric heads have two height options.

GLENOID FIXATION

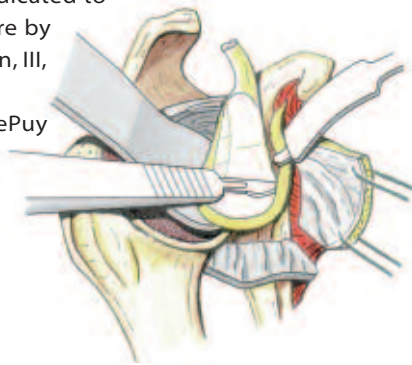
Easier and more effective

Successful total shoulder arthroplasty requires extensive surgical exposure, simple instrumentation, a firmly seated glenoid prosthesis and an anatomic articulating surface.

SURGICAL EXPOSURE*

DePuy is committed to surgeon education.

A new video dedicated to surgical exposure by Frederick Matsen, III, MD, is available through your DePuy representative.



INSTRUMENTATION

New instrumentation provides improved visualization, increased reaming efficiency and reduced instrument-related steps.



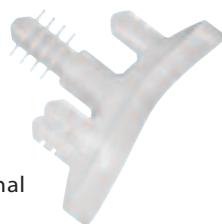
FIRMLY-SEATED GLENOID

Patented five-pegged glenoid design helps provide greater stability by helping to prevent "rocking horse" related loosening.



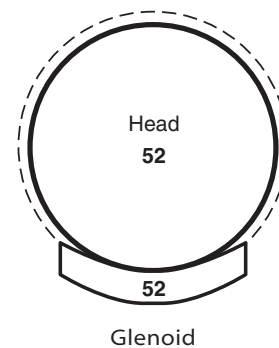
Keeled glenoids are available for cases involving a tight joint compartment or compromised glenoid bone stock.

Patented minimally cemented, pegged glenoid prosthesis. Designed to improve long-term fixation, compared to conventional all-polyethylene keeled and pegged glenoids.



ANATOMIC ARTICULATING SURFACE

A constant 6mm diametral mismatch between the glenoid and the humeral head emulates anatomic biomechanics and helps reduce potential rim loading.



* Illustration by S. Lippitt, MD

GLOBAL ADVANTAGE SHOULDER

Backed by over a decade of success

Insert ordering information (Cat. No. 0611-02-050) here.

DePuy Orthopaedics, Inc. has combined innovative science and simple instrumentation with the Global™ Shoulder's decade and a half of clinical success¹ to bring you the Global Advantage® Shoulder Arthroplasty System. The Global Advantage Shoulder is the only third generation system that brings together a proximal-filling humeral body and low profile standard and eccentric humeral head options with easy to use instruments.

NEW FEATURES

Recessed collar

- Helps optimize glenohumeral contact area

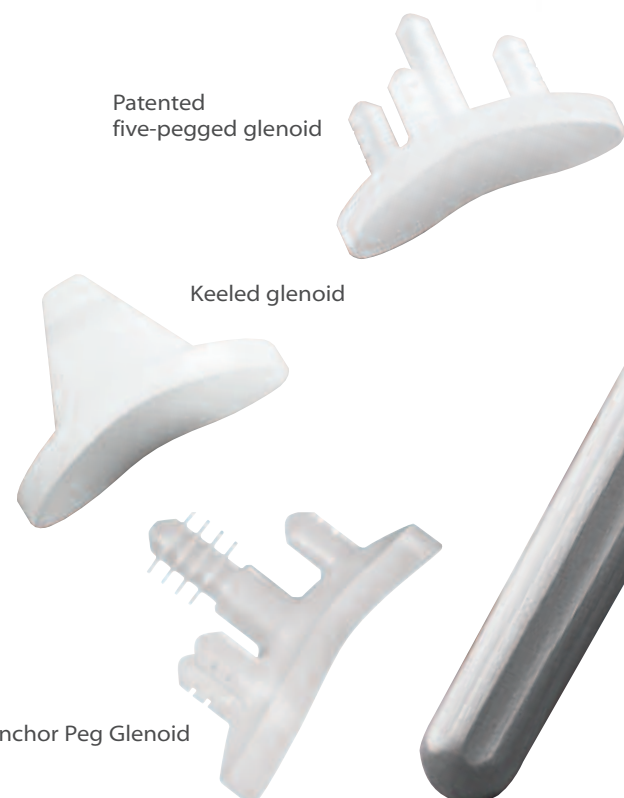
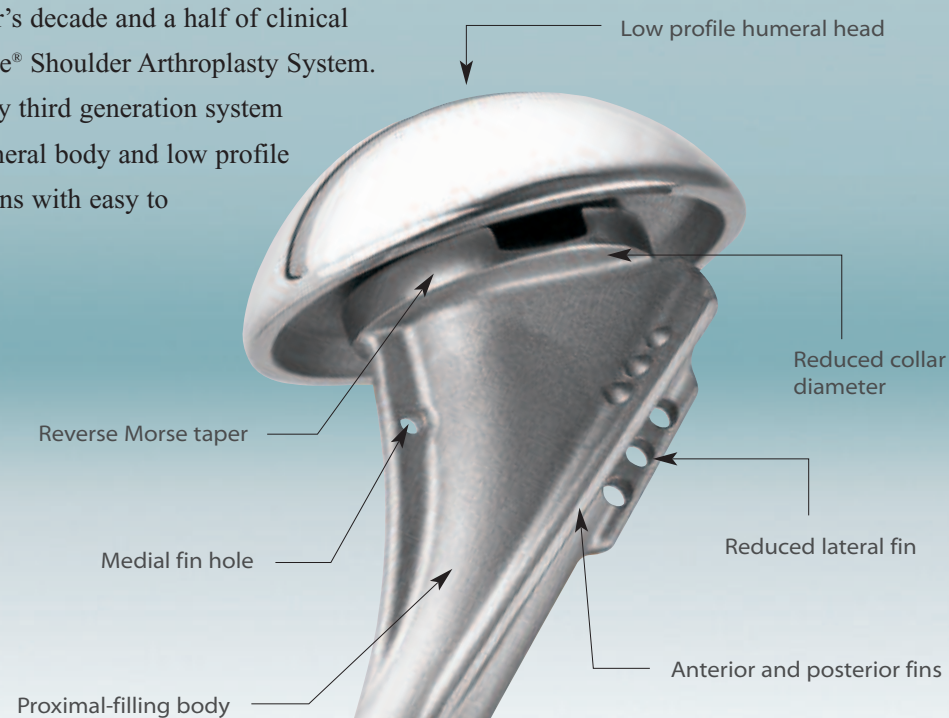
Low profile standard and eccentric humeral heads

- Increase articular surface area by 25-33 percent¹

Reduced lateral fin prominence

Medial fin hole

- Provides additional fixation opportunities if used for fractures



PROVEN FEATURES

Proximal-filling body

- Proven success² in press-fit application

Reverse Morse taper locking mechanism

- Provides maximum surgical exposure with stem and broach
- Allows humeral head removal without removing stem

Pegged and keeled glenoids

- Anatomic mismatch allows natural translation
- Gas plasma sterilization helps reduce oxidative potential

Tapered, titanium humeral stem