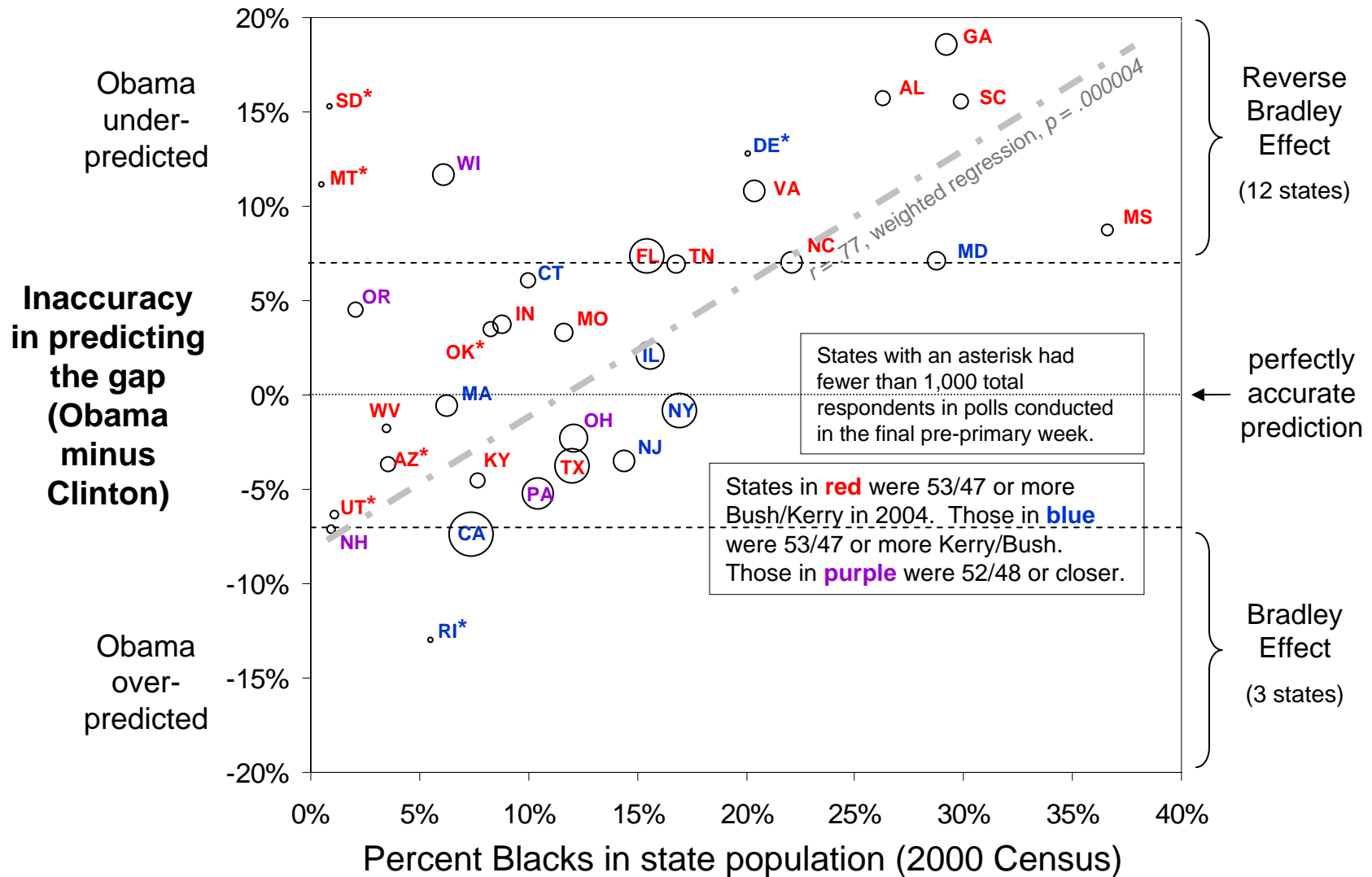


Data are from 32 states in which Barack Obama and Hillary Clinton competed **and** in which pre-election polls were conducted in the week before a primary vote. Sizes of bubbles are proportional to number of voters in each state. Prediction errors of 7% or more in either direction (above or below the dashed lines) are noteworthy — they are well outside the polls' expected margins of error.

## Bradley and Reverse-Bradley Effects in Democratic Primaries, 2008



Address questions to: A. G. (Tony) Greenwald (agg@u.washington.edu) or Bethany Albertson (balberts@u.washington.edu)